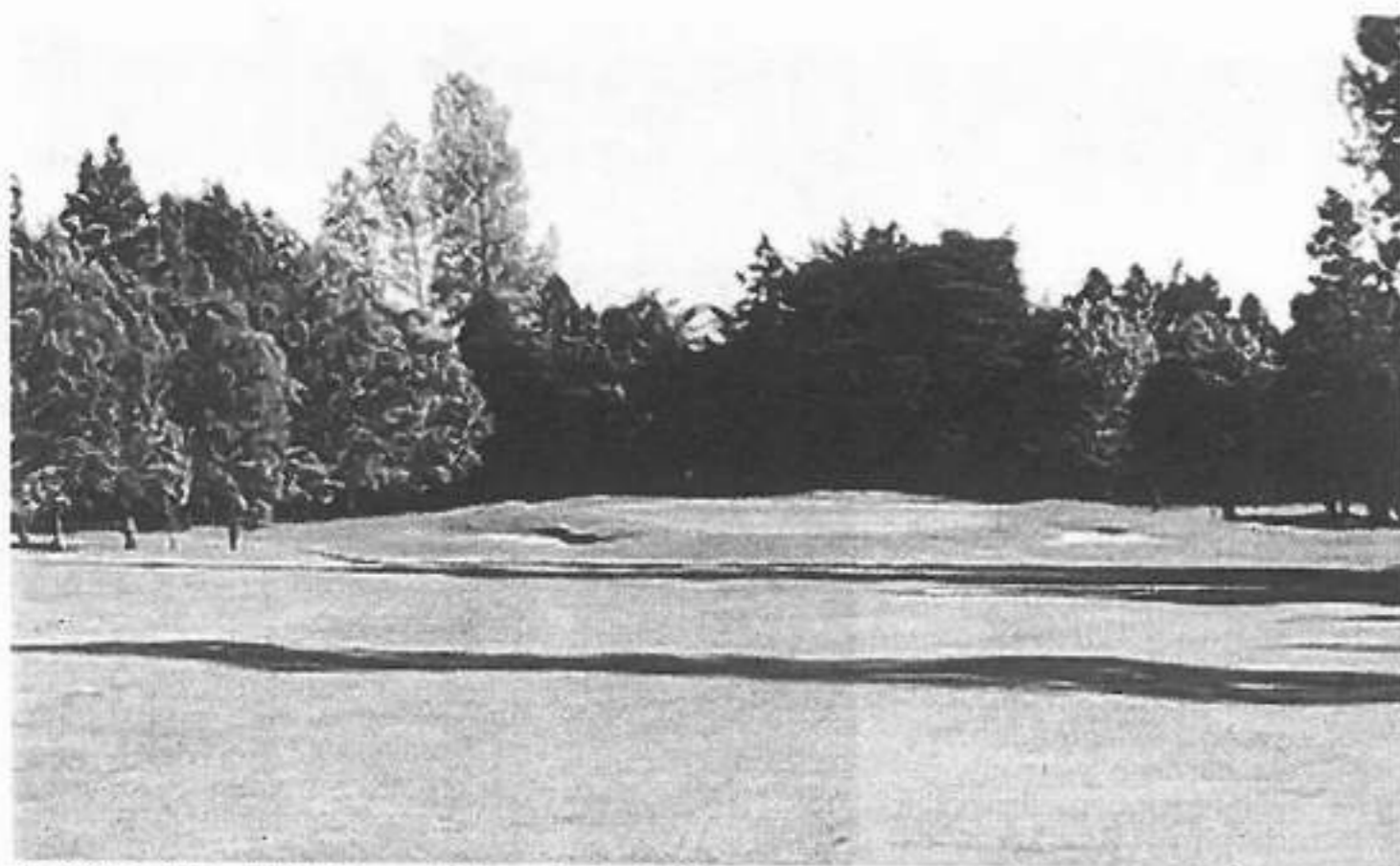


# MID-WEST GOLF



The fifth hole at Limerick Golf Course which was founded in 1891

## Play one of Ireland's oldest courses right here in Limerick

LIMERICK Golf Club is located at Ballyclough, on the southern outskirts of Limerick City and is one of the oldest golf clubs in Ireland, founded in the same year as the Golfing Union of Ireland, 1891.

The course and the clubhouse are located on the original site of Roxboro Castle and grounds. The club boasts a mature parkland course, with a number of holes designed by Dr. Alister McKenzie, architect of Lahinch and Augusta National, and others by John D Harris. The Current layout measures 6,500 yards in length and has a par of 72. Limerick has one of the largest memberships in the country with over 1,300 members.

Limerick Golf Club has a proud tradition in competitive golf in Ireland, having won twelve national titles and was the first Irish club to win a European title at senior level.

The most recent Irish title was the Pierce Purcell Shield in 2008. It has played host to many championships over the years, not least an exhibition match in the 1930s which included the famous American golfer, Walter Hagan, and our own John Burke.

The JP McManus Invitational Pro-Am, the biggest pro-am event of its kind in Europe, had its home at Limerick Golf Club from 1990, with the last staging in July 2000. The field included some of the biggest players in the game,



Club steeped in history: The Limerick Golf Club Seniors group pictured in 1970

such as Tiger Woods and Mark O'Meara and was an enormous success, raising over €19,000,000 for local charities. Both of these players returned to Limerick Golf Club in 2001 and were conferred with Honorary Life Membership, Tiger Woods presented the flag from the 18th green of The 2000 Open Championship held at St.

Andrews, to the club.

A new, modern clubhouse was opened by Padraig Harrington in August 2007 and offers magnificent views over a large portion of the golf course. Full catering and bar services are provided and the restaurant has a reputation for very high quality presentation and service.



## Limerick Golf Club

Ballyclough, Co Limerick



Limerick Golf Club is located at Ballyclough, on the southern outskirts of Limerick City and is one of the oldest golf clubs in Ireland, founded in the same year as the Golfing Union of Ireland, 1891.



Limerick Golf Club is a mature parkland course, measuring 6500 yards with a standard scratch of 72 for Men and 74 for Ladies.

Full Bar and Restaurant facilities available for your Special Occasion or Private Dining as well as on course catering for your Group or Society. Fully stocked Professionals' Shop with private or group lessons also available.

We are now taking bookings for all Classics, Corporate Groups and Golf Societies for 2015, with great prices available midweek and weekend.

Special Membership Rates and Reduced Entrance Fees also available for all Categories of Membership including:

- Single Membership
- Husband & Wife Membership
- Country/Overseas Membership
- Under 30's Membership (No Entrance Fee)
- Senior Membership (No Entrance Fee)
- Junior Membership (No Entrance Fee)
- Membership Reinstatement (No Entrance Fee)
- Open Singles every Monday
- Timesheets open 2 weeks in advance
- Entry Fee €20
- The last Monday of the Month is from the Blue Tees.

For further information, please contact Pat Murray, General Manager on 061 415146 or by email at pat.murray@limerickgolfclub.ie