

LLAS COURT

d Traffic Cases

Diagreen Court on Tuesday, before Justice D. F.

White, New Cottages, was summoned for not the tax displayed on his Dola, on the 21st April.

Martin Cuff proved the s, and said he learned van had been taxed. On e occasion he found that at and rere identification were not distinguishable, totalling 25/- were in-

O'Dea, Longstone, Cullen, mmoned for not displaying on his motor car at Deon 9th.

int McKenna proved the s.

APPLIED FOR RENEWAL

efendant said in evidence sent in the payment for of the licence on the day y being questioned by the t, and he got the licence ie County Council on the lowing the Sergeant's in- ion.

of 5/- was imposed.

O'Donnell, no fixed abode, mmoned for allowing five to wander on the public

Linfield on the 15th April ant Kelleher, Pallas, after the summons, said in re-

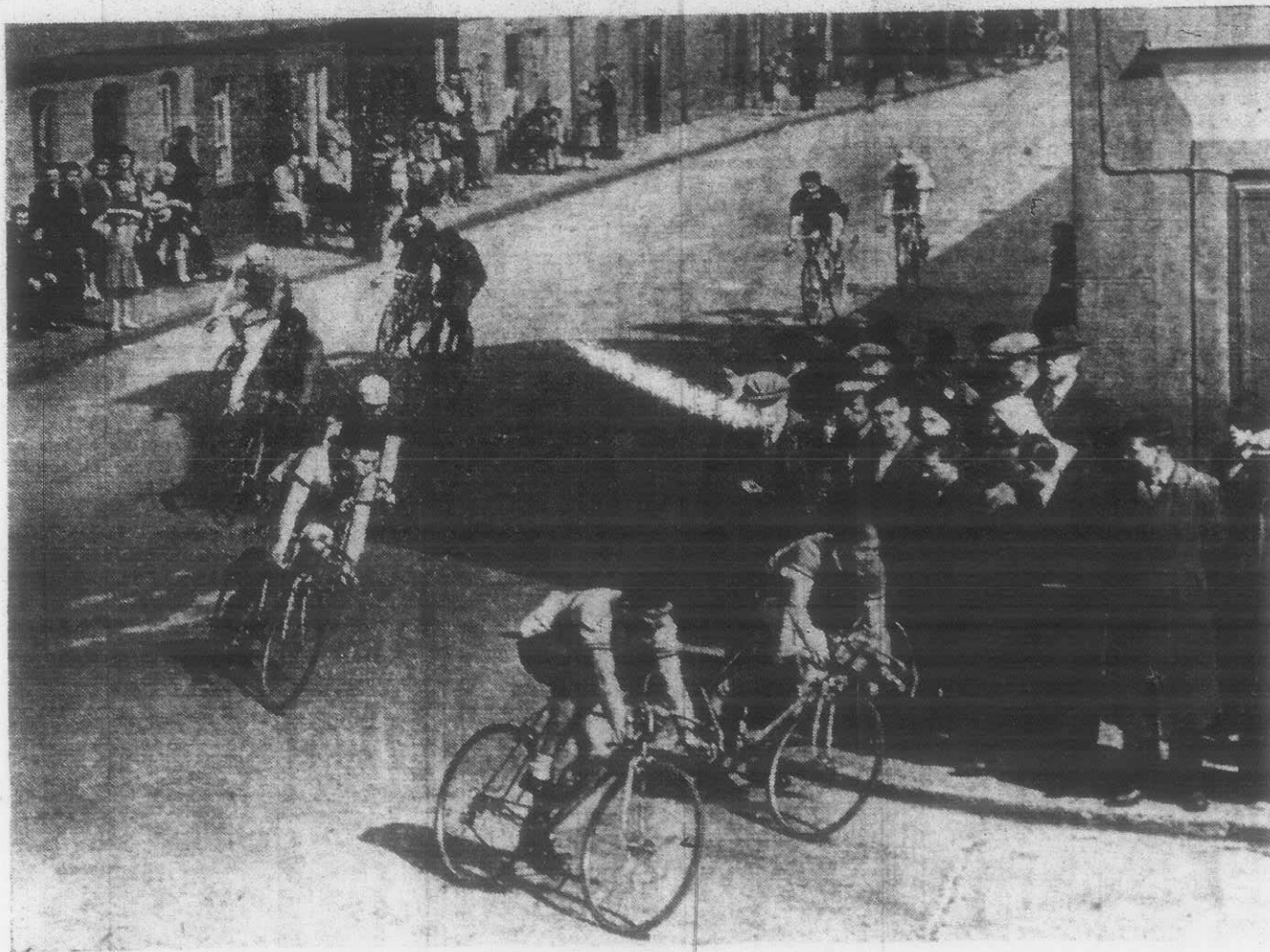
the Justice that there were s convictions against the nt.

e of 40/- was imposed.

NG—When about to order of any kind ask at the ck Leader" Office for Quot- "I will pay you to"

could not do as they pleased. s was the first case to be t to Court the penalty would too severe. He would im- fine of £10.

INTERNATIONAL CYCLISTS



Competitors in the International Grand Prix Cycling Race, "Around the Houses" of Limerick City, on Whit Monday. [L.L. Photo.]

MONEY NEED

Protection For F

THAT their revenue be so that more water be appointed was a mendation made at the m Limerick Fishery Board nesday, Mr. Liam Forde, C presiding.

A sub-committee, in a s port, dealt exhaustively financial position of the B entire income was £6,5 would permit only of the ment of nineteen keepers t 6,000 square miles of wat result was that poach widespread. If the rive their jurisdiction were t reasonable protection, 42 should be employed at an remuneration of £8,000.

FARCICAL POSITI

The present measure o tion was farcical in the as only three keepers we able for protecting th waters of the Shannon, and tributaries.

With a view to increa revenue of the Board Committee made the foll commendation:—

A 5/- licence for rod fi trout; a 50 per cent inc licence duty for all salme engines; a substantial S and a 2d per lb duty on a exported, the proceeds to by the Department to the Board.

The revenue from the licence duties was esti amount to £1,200 per from the 2d duty on salmon sold to £4,000.

Mr. Whelan said that t was a very brilliant effo part of the Sub-Committe Minister and his D would give equal attenti problem the troubles of th Board would disappe quickly.

CONSERVATIVE ESTI

TRACTOR ON ROAD

Series Of Charges

THOMAS O'MAHONY, farmer, Ashford, Dromcollogher, was

F.C.A. NOTES

City And County Battalions