

td.

essing Table, £42 10
 be, 2-drawer
 usual price £37 10
 robes and £85 0
 e £150. Now
 wardrobe, 5'
 awer Chest, £69 10
 ly £11 5

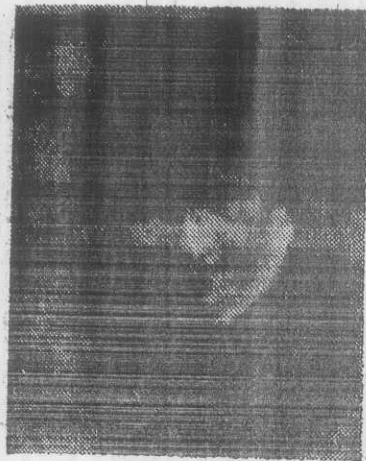
complete
 price £21.
 £16 5 0
 no head-
 O. Now ... £14 0 0
 usual price £19 19 6
 dress, usual £23 10 0

12 cots left from our
 to sell regardless of

**Earls
 for
 Southampton**



The past week has been a memorable one for Ballynanty Rovers pivot Michael Earls. On Monday he was selected to play for the Republic of Ireland youths' against Northern Ireland, and then followed an offer from Mr. Ted Bates, Manager of Southampton A.F.C., to have a trial with them. Mick will leave Shannon Airport for London on Monday next. All soccer followers will join with me in wishing the Ballynanty youth every success in his trial.



Pat Sheehan will be at full-back for Pike Rovers in their vital league clash with Shelbourne to-morrow.

IIINIOP

Week-End Games: West

**CALS. FAC
 IN BAL**

Youths' Cup

by

**BALLYNANTY RVS., who hit seven
 midable task at Cals. Park to-n
 ians in a vital league game. Pike R
 Shelbourne, while Weston Rgs and
 positions at the expense of 'Boro an**

Caledonians may be out of the running as far as the premier League is concerned, but they are still very much involved in the race for F.A.I. Junior Cup honours and will be anxious to boost their stock at Ballynanty's expense. Balla' are quite a useful combination and such players as John Finucane, Sean Tuite, Cyril Rice and Mick McInerney will test Cals. resources to the full. Cals., however, appear to have all the aces on their side and they are playing well enough at the moment to collect another brace of points.

go either way, but Balla's striking power should see through.

St. Brigid's have edge

St. Brigid's, said to be most improved team in the Division, have an attractive lined up against Rivers Cals Park, and have craft and experience to them to maximum points. side have above average in Jim McNamara, Tom Jhan and Mick Kelly, and they can be depended upon to produce the goods, they find their opponents that fast, both on and off the t

Shels can improve

Even though they won with three goals to spare against Riverside last Sunday, Pike Rovers weren't that impressive and will have to do a shade better if they are to account for Shelbourne. Shels. are going through a lean period just now—they were shocked 5-4 by Second Division Bedford recently—but they invariably do well in their meetings with the "Hoops" and will be hoping to take at least one point to-morrow.

Geraldines again

Geraldines gave promise of better things to come when beating Janesboro' in their last outing and can continue the good work by taking care of inconsistent Star Rovers. John Ryan has made for big improvement in the 'Dines' defence and with Flintan Lawlor, Patsy Collopy and John Slattery supporting him they can bore sufficient holes in the Rovers' defence to see their side through.

THE J

Johnny Gavin was one best-known local football play across-Channel. He been with Limerick for nine months when snapp by Norwich City. Gavin soon to emerge as a to winger, and his services much sought after. He transferred to Tottenham spurs from Norwich, and debut with the famed I club he hit four goals International honours can way. After a successful with Spurs he moved to C Palace.

Johnny was invited by