



## WILL EXPORT BEEF CANNING SURVIVE?

By M.F. Cowhey,  
Managing Director.

The Meeting of the Agricultural Ministers in Brussels on 6th & 7th June and the package deal on prices and regulations resulting from this deal represents the last chance of saving the Export Irish Beef Canning Industry. Will Mr. Gibbons push it up to the top of his priorities or leave it where it has been for the past two years — at the bottom of the pile on the Irish Agricultural list for Ministerial haggling? Whatever the outcome, it just will be a partial

solution just sufficient to keep the Industry alive. The only complete solution is an application of the full M.C.A.'s to Canned Beef in a similar fashion as to all other Beef Products. This, we are told, is not available and so for a full solution, we must await a full devaluation of the British Green Pound.

So we hope for Common Justice from Brussels. Give us back what they have taken away.

## The softly~softly saga

THE litany of civilised attempts by the meat factories to change the MCA system for canned meats

Date	Venue	Meeting with
September 1, 1977	Dublin	Department officials
September 13, 1977	Dublin	CII
September 30, 1977	Dublin	ITGWU
September 30, 1977	Dublin	Department officials
October 4, 1977	Brussels	EEC officials
October 17, 1977	Dublin	Department officials
November 30, 1977	Dublin	Department officials
January 20, 1978	Dublin	Department officials
January 31, 1978	Dublin	Department officials
February 7, 1978	Dublin	Minister for Agriculture
April 7, 1978	Brussels	EEC officials
April 24, 1978	Dublin	Department officials
May 4, 1978	Dublin	Minister for Agriculture
June 2, 1978	Dublin	Department officials
June 19, 1978	Dublin	Department officials
September 5, 1978	Dublin	Department officials
November 3, 1978	Dublin	EEC officials
November 27, 1978	Dublin	EEC officials
January 16, 1979	Dublin	Department officials

Above Table an extract from "THE FARMER" Magazine, 1st April, 1979.

## LIVESTOCK ENQUIRIES

Because of the difficult telephone situation, we are making arrangements to cater for Livestock Enquiries between the hours of 7.00 p.m. and 9.00 p.m.

Our telephone will be staffed by a

member of our Livestock Department during these hours. This arrangement will apply from the 1st August, 1979 and the number to ring is (061) 40700. Full particulars in our next issue.

## HOME FREEZER Etc., DEPARTMENT

The above will be open on Saturdays until 5.00 p.m. from Saturday, 21st July, 1979 for the following purposes:-

1. To answer all inquiries on

- Home Freezer Requirement.
- To take orders for Home Freezer Requirements.
- To sell small special packs only.

## HOLIDAY ARRANGEMENTS

The following are the Summer Holiday arrangements for the Company.

Holidays will commence on Monday morning, 2nd July and work will resume on Monday, 16th July.

Livestock will be accepted up to noon on Wednesday, June 27th. Livestock will not be accepted after this time.

Special arrangements have been made to maintain our Home Sales Service. This Department will remain in operation throughout the holiday period.

We wish all members of the Staff of Shannon Meat Ltd. and all our Readers everywhere, a cheerful and joyous holiday.

"May the Petrol flow freely for you".

## 25 YEARS WITH SHANNON MEAT LTD.



Attending the Reception in honour of Staff completing 25 Years Service with the Company are: Front Row (L to R): W. Kelly, J. O'Connell, B. Daly, F. Wall, P. Lynch, P. Cawley, Back Row (L to R): M. O'Grady, S. Guiry, P. McNamara, M. Cowhey, J. Mulcahy, M. Dooley, D. Neville and P. Sheehan.

"The loyal service of the employees is regarded as a very important asset by Shannon Meat Ltd. I wish to compliment you on such loyalty which you have shown through the past twenty-five years". These were the words of Mr. Frank Wall, Chairman of Shannon Meat Ltd., at a recent reception to celebrate twenty-five years of service to Shannon Meat Ltd., by members of the staff with the Company since its commencement of production in 1953. Mr. Wall continued, "Some of these years were not as affluent as those at present, still you served the Company well for the past twenty-five years and I am confident you will do so for many years to come. It is a singular honour for me to have this opportunity to thank you, and through you, other members of the Company for their loyalty down through the years". Mr. Maurice Cowhey, Managing Director of the Company, welcomed Mr. Wall to the function and paid tribute to the attention he has given to the Company for many years. Mr. Wall presented, specially commissioned, twenty-five year service badges at the function which took place at Rathkeale House Hotel on 27th April.



Mr. Frank Wall, Chairman of Shannon Meat Ltd., presents a 25 Year Service Badge to Mr. Paddy McNamara.

A very enjoyable evening was experienced by all present. Reminiscence was the key theme with many stories from the earlier days of the Company rehearsed. It is interesting to recall the general economic climate of our country at the time of commencement of operations at Shannon Meat Ltd. Industry in Ireland, in 1952 was protected by high tariffs and was almost one hundred per cent exploiting the home market. It required courage to set up Shannon Meat Ltd., in that year, an Industry totally dependant on the export market. The initiative was locally inspired and 35% of the subscribed capital came from the parishes of Rathkeale and Croagh. The objectives of the promoters were to provide employment locally, raise the prosperity of the area and a belief that the live cattle trade would eventually come to a stop and so provide the raw material for the future success of the Company. No help, financial or otherwise, was made available from State sources. The old workhouse grounds were leased from the Department of Health and an abattoir, chill rooms and freezer chillers with ancillary services were completed in January, 1953. The operations commenced in February, 1953, on the same day as the old February Fair Day in Rathkeale, and quite a large number of people who attended the Fair came to view operations. Only some twenty cattle were slaughtered on that particular day. At this time, the employment content was 34 people, the area of the factory buildings 15,000 sq.ft. Since 1961, the Company has grown at a steady pace. The present employment content is 300 and the area covered by the factory buildings is 104,000 sq.ft. (circa 2½ acres) of floor space.

The present position of the Company is due to no small contribution of the employees whose service was acknowledged on April 27th and to the many other employees who served the Company well down through the years.

## NO RELATIONSHIP BETWEEN STORE AND CARCASE VALUE

By Donie Donovan.  
Livestock  
Procurement Manager.

Communication, or the lack of it, is a subject which we are very much involved in and it is not because of the P. & T. strike that I am tempted to write about it.

When herd owners are telephoning the Plant for quotations, it is very important to give an accurate description of the type of stock they are pricing. Ideally, if one has the seller and buyer on the spot at the point of sale, a lot of problems would be eliminated, of course, this is not always feasible.

To give an example of this: if someone asks the price of heifers and is quoted top price per lb. dead weight, we would not realise that the animal is being slaughtered for some reason or another; e.g. Brucellosis. The store price of an animal bears no relationship to its carcase value.

It comes to mind that there are a lot of small heifers turning up in the Brucellosis Scheme being slaughtered at present and are realising very small money. Leave aside the compensation, some of these heifers are not realising one third of their store value at the 18 months stage. The younger the animal, the wider the gap in price between the store value and its salvage value, plus the fact that these light unfinished cattle are not helping our image as beef exporters.

### STERILISING

I wonder if anybody has looked into the cost of sterilising these animals, or is it possible? Could one make a case whereby these small animals could be issued with a beef identity card? In turn it would mean that the animals would not go for breeding purposes. Something will have to be done before the farmer, himself, is eradicated. Could these animals be channelled into a properly controlled feed lot in a calf to beef system with all due respect to current regulations in force in the Disease Eradication Programme. Progress is very slow.

Recently, I met a gentleman who was very annoyed because he had to test his cattle before he could sell them and his neighbour sold his stores at home for some live trade without a 30 Day Test.

Stores were making record prices this late Spring which is hard to explain. The general view seems to be that cattle are scarce. On the surface this may be so, but could the stringent regulations in force since last October be partly responsible for the situation?

To purchase calves this Spring, at least one had not to contend with testing and up-to-date cards, and this trade was booming, in spite of very large numbers. Is it possible that there is some connection between the two? We have yet to see a year that had not got a turning point.

## FUTURE CATTLE SUPPLIES

A recent study published by C.B.F., the Irish Livestock and Meat Board, examines the likely future trends in cow numbers, total cattle inventories and disposals. The report forecasts an increase in the total cattle population to 2.24 millions, or 2.34 millions at best by 1982; between 7 per cent and 12.5 per cent increase. The trend towards dairying, because of the higher margins, is expected to continue, but at a slower rate. The beef cow herd, however, is to continue to decline and is now at the same level as in 1971-'72.

Because of our low level of live imports, the size of the breeding herd in relation to supplies is extremely important, and the breakdown of disposals shows clearly the high level of live exports in relation to export slaughterings. In 1978, meat exports accounted for 68 per cent of the total volume, whilst the remaining 32% was due to live exports. Calf numbers alone dropped by 5 per cent in the same year because of the level of live exports of calves.

### BEEF HERD EXPANSION

The importance of expansion of the beef herd and a reduction in live exports for the Meat Industry and the economy is recognised by the E.E.C. The intention is to reduce live exports whilst increasing meat exports, and to shift production from the dairy sector, where there is a surplus, into beef. By 1982 slaughterings are expected to reach 1.5 millions with an increase of 13 per cent in livestock numbers. An £80 millions programme to achieve these figures has been approved by the E.E.C., £50 millions of which will be used in modernization plans. These will increase slaughter house export capacity by 30 per cent, refrigeration facilities by 25 per cent and boning facilities by 30 per cent.

## TOWARDS MORE QUALITY PRODUCTION

By Donie Ahern,  
Livestock Field Officer.



Mr. Donie Ahern.

Profitable farming is linked directly with both quality and quantity. Expansion in output can sometimes be difficult, but improvement in quality is open to most farmers as a means to increasing income.

Most of our beef cattle in Ireland are a by-product of the dairy industry. Hence, the dairy farmer has control of the quality of our beef herds to a large degree. While we all agree that replacement stock are a priority for the dairy farmer, when adequate replacements have been allowed for, some consideration should be given to the continental breeds. There are a large variety of bulls in the A.I. Stations with both beef and milk characteristics, it would be wise to look at these as a means of breeding calves of higher beef potential. Information on all bulls is available on demand and it is a pity, and bad economic sense, not to make full use of the best bulls available at all times for whatever purpose they are required. When continental bulls were first introduced in Ireland, everybody seemed enthusiastic due to the price differential. However, when the high percentage of calving problems became apparent, there was a swing away towards easier calving bulls again. Much research has been done by the A.I. Stations and there is now a chart available showing the percentage of calving problems incurred by all bulls. There is much more information available also on the feeding of cows which have gone in-calf to continental bulls.

### BEEF CLASSIFICATION

With the advent of Beef Classification and the swing towards calf to beef systems, all farmers can be sure that the better calf will command a premium on the market at all stages. Size and confirmation are directly linked with daily weight gain, and with margins getting tighter, the animal of higher quality will always leave the best margin all along the line.

The suckler herds, even though they are now a small percentage have swung over in a big way to the continental breeds over the past few years. Much can still be done, the breeding stock can be much improved to include more continental type cows. It is a very gradual process to improve the suckler herd, but everybody should try to move in that direction.

Until Brucellosis is eliminated, every farmer should ensure that

adequate replacements are allowed for, as the risk of high incidence of the disease and slaughter of reactors would result in a drop in the breeding herd and a resulting drop in milk and numbers of cattle for slaughter eventually.

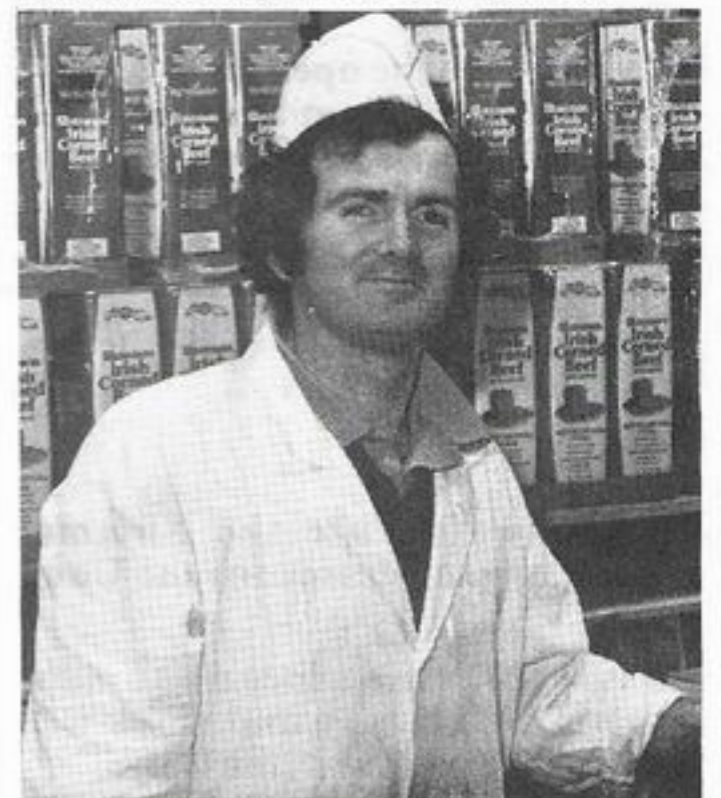
### CALVES AT HOME

The major percentage of our calves have stayed at home this year in Ireland which is a welcome change. However, it is a pity if adequate feed is not provided to take these up along the line to beef. Any farmer on a calf to beef system, with adequate feed and good stock husbandry all round, will find it both economic and profitable. Everybody should strive for better quality, both in feed and stock, as quality beef is what is needed, and quality will be rewarded with better prices henceforth.

## I.T.G.W.U. NEWS

### SHOP STEWARDS COURSE

The Irish Transport and General Workers Union organised a Shop Stewards Industrial Relations Course in April. The Course took place at the Shiels Arms Hotel, Rathkeale, and was attended by four of our members in Shannon Meat Ltd. The duration of the Course was for a period of one week. Areas covered in this Course included Labour Law, Negotiating Procedures, Function of the Labour Court, Rights Commissioners and other methods of solving differences. Attending the Course from Shannon Meat Ltd. were Tom Gray, Denis Noonan, Marcella Curtin and Moira Daly. Those who attended the Course thought it very worthwhile and felt that the application of the knowledge received would help to maintain good industrial relations within the Company while being in a position to have full knowledge of the individual rights. The Course was conducted by Mr. Francis Devine and Mr. Pdraig Canny of our Union's Service Division in Dublin. Also attending the Course were four Shop Stewards from Wyeth (Ireland) Limited, three from Southern Chemicals, two from Scanglo International Limited and one from Desmond Creations.



Pictured above is Tom Gray who recently attended the I.T.G.W.U. Shop Stewards Training Course.

## Quality Meat for your Home Freezer

- \* Home Freezer Special Prime Beef Packs
- \* Prime hind and forequarter heifer beef
- \* Your own stock processed to your specification
- \* Top quality Lamb Packs and Lamb Carcasses
- \* Specialist advice on Home Freezer maintenance.

Get full value from your Freezer.

Meat supplied by Shannon Meat Ltd. is processed under modern hygienic conditions. This ensures top class quality, proper maturing, best cutting and packing methods and blast freezing to ensure meat is frozen solid in the shortest possible time. We are proud of our Home Freezer Service.

For full particulars contact :-

The Home Sales Manager,  
Shannon Meat Ltd.



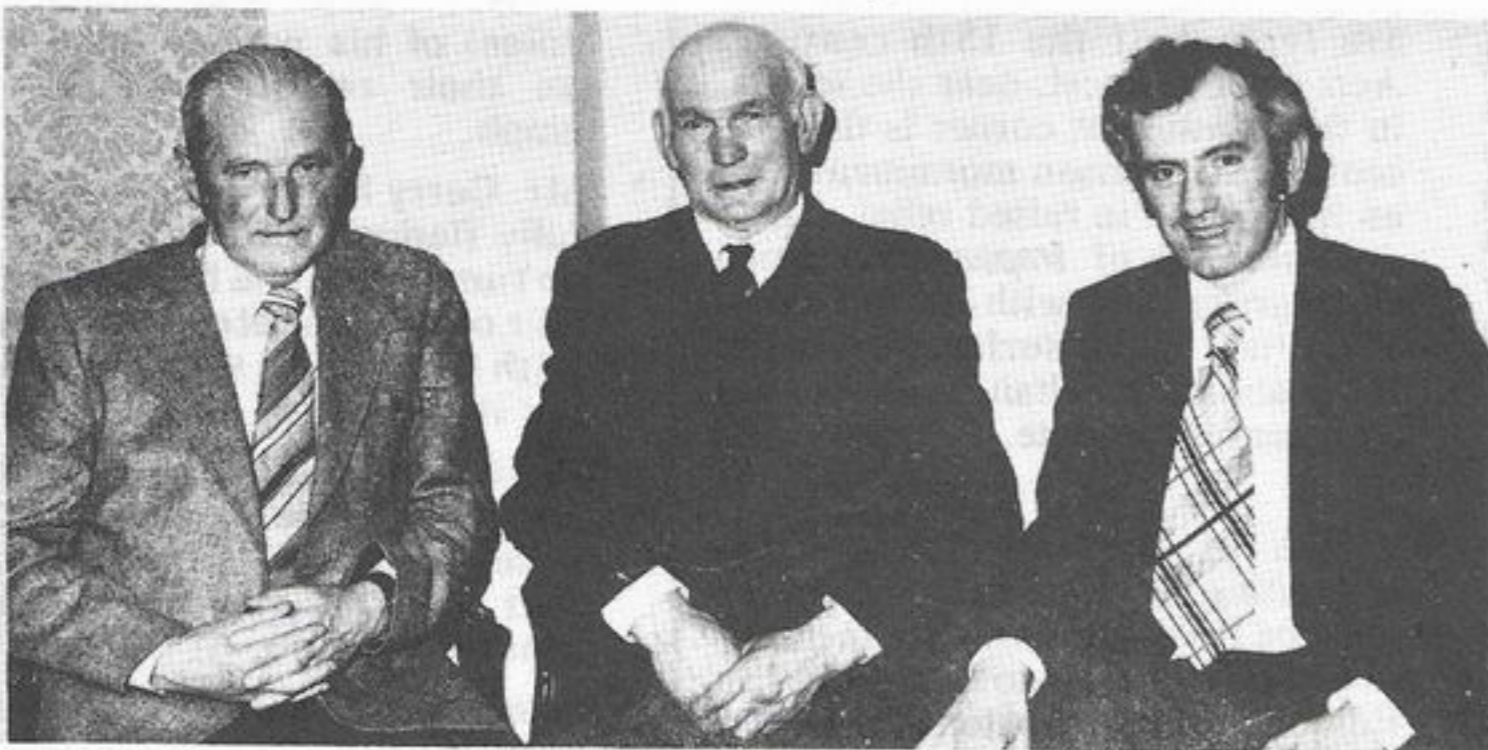
Looking relaxed at Rathkeale House Hotel are John O'Connell, Slaughter House Supervisor and Michael O'Grady, Assistant Boning Hall Supervisor.



Mr. P. Lynch, General Manager and Director of Shannon Meat Ltd., shares a joke with Mr. Sean Guiry and Mr. Paddy McNamara at Rathkeale House Hotel.



Michael Dooley and Bill Kelly, pictured above at Rathkeale House Hotel on April 27th.



Pictured above at the Reception on April 27th are, (L to R): Paddy Sheehan, Bernard Daly and Dan Neville.



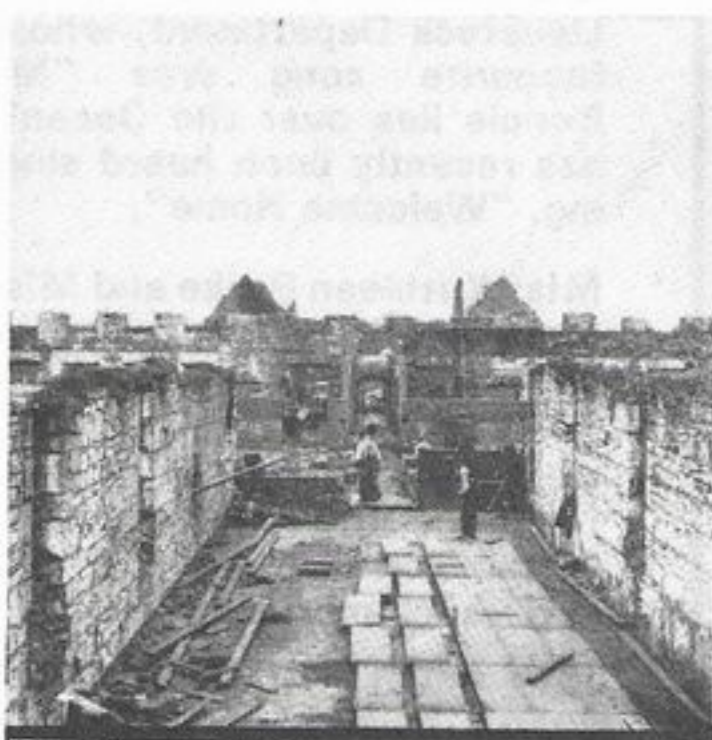
Chatting at the Reception in honour of Employees completing 25 years service with the Company are: Frank Wall, Chairman, and John Mulcahy, Production Manager, Shannon Meat Ltd.



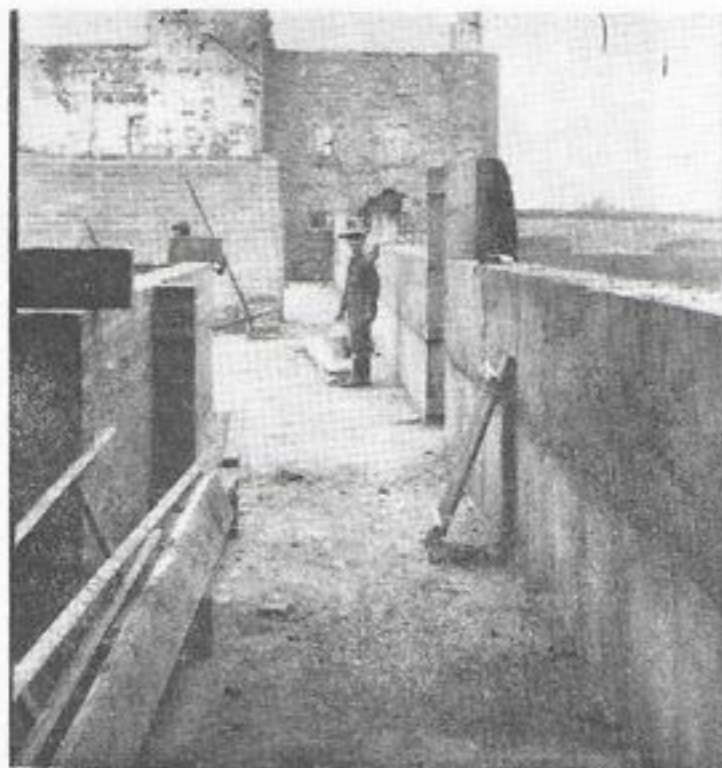
Mr. Paddy Cawley being presented with a 25 year Service Badge by Mr. Frank Wall, Chairman, Shannon Meat Ltd.



Mr. Paddy Sheehan receives his 25 year Service Badge from Mr. Frank Wall, Chairman, Shannon Meat Ltd.



The above is a photograph of the building of the present Hanging Hall area which was the Chapel during the old Workhouse days. [Photograph circa 1950].

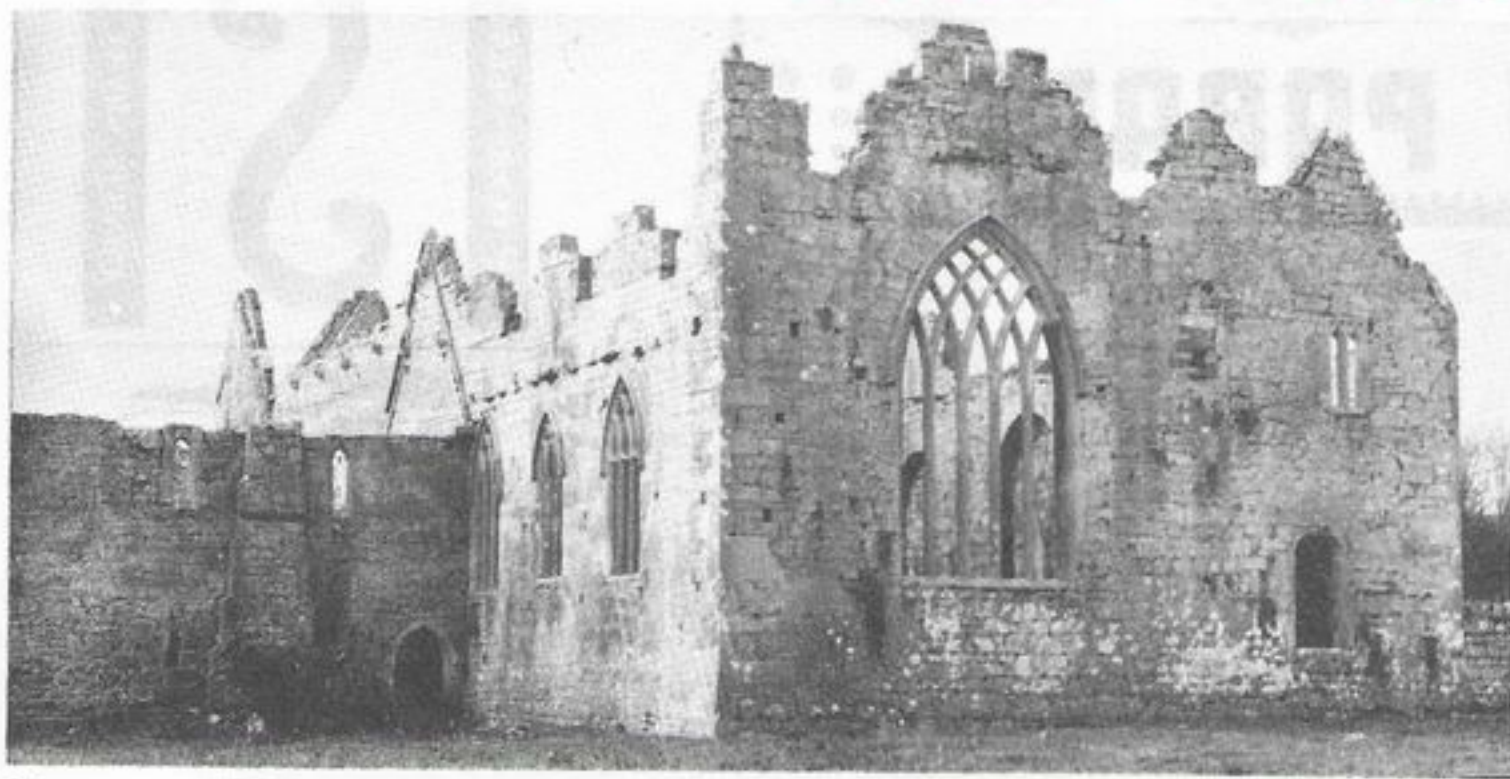


Above photograph was taken during the construction of the present corridor between the Chillers. [Photograph circa 1950].



The above Company Employees, Michael Guiney and Batty Collins were recently presented with Special Prizes by the National Industrial Safety Organisation. They answered all questions correctly when representing Shannon Meat Ltd. at the NISO Mid-West Region Safety Quiz.

# ASPECTS OF LIMERICK'S PAST No. 6



ASKEATON FRIARY: East Window of Chancel (Church) with Kitchen (Left) and Sacristy (Right).

[All Photos Courtesy of Author].

## ASKEATON FRIARY ("ABBEY")

Askeaton 'Abbey' is one of the finest examples of ecclesiastical architecture of late mediaeval Ireland providing the visitor with a well preserved example of the lay out of the contemporary Franciscan Convent and a text book of the various details of carved masonry of 15th century Munster. If, as Mooney has said, the Franciscan Friary of pre-Reformation Ireland was a model social unit with its "Church, sacristy and cemetery, eating, sleeping and living quarters, infirmary, washroom and toilet; library, archives and studyroom; buttery, pantry, scullery and kitchen, bakery, brewery, granary and mills" there can be fewer more complete examples of such self-sufficiency than Askeaton Friary.

The Friary was built for the Conventual Franciscans by Gearóid "File", the 4th Earl of Desmond in 1389. It was restored in the 15th century by James, the 6th Earl and it is from this period that almost the entire surviving friary dates. The 'Abbey' adopted the Observantine reform in 1497. It was wrecked by Nicholas Malbie, English Governor of Connacht in 1579 when many of the Monks were put to death. The Friars returned in 1627 and restored the building in 1643 and finally abandoned it on the approach of the Cromwellians in the same decade. After this, the Friary was used by the Friars until 1740 and guardians were appointed until 1878. Some of the Askeaton Friars acted as curates in Glin as late as 1766.

Even though the Church was started at the end of the 14th century, most of the present buildings were erected 1420-40, that is just earlier than the Great Banqueting Hall in Askeaton Castle. The ruins comprise of a rectangular church with nave and chancel and a later wing or "transept" on the North side. There is an excellently preserved cloister to the South of the church — a detail in which the Askeaton Friary differs from all others where the cloister tends to be North of the church. The craggy nature of the subsoil on which the church at Askeaton was built made this impossible as it would have meant that the Church would have been overlooked by the cloister and domestic building. The dormitory is situated in the vaulted areas above the cloister, the refectory is situated South of the cloister. The kitchen is situated to the East of the cloister and the chapter room on the opposite side. There is a fairly elaborate *garde-robe* (toilet) on the West side leading to the river while the "transept" or wing, the now missing tower or belfry and the sacristy were all added later in the 15th century on the South side of the church.

The church measures 119' 8" x 22' 9" (inside). The East window above the now missing high altar at the chancel and is pointed and divided into five lights. It is about 20 ft. high x 9' 5" wide, the crossing of the mullions at the top being a fine example of 'switch' tracery. The South wall of the chancel has three large pointed windows, each divided into three lights, two being 'switch' tracery — the most easterly being



ASKEATON FRIARY: View of Chancel of Church towards Firelight East Window. Typical triple headed Tomb niches are at left and right foreground.

By Patrick F. Wallace.

more ornate with cusps or projecting curves. There is a further large window in the West gable of the nave, its lights broken except for one mullion. The nave, or usually more plain West half of the church was the area farthest from the high altar and that occupied by the ordinary congregation (parishioners) who were divided from the Friars and Religious by a rude screen (usually wood, often stone) centre ways across the church. The half of the church reserved for the religious was called the *chancel*, which centred around the high altar under the great East window. The area of the Monks' stalls or seats was called the choir. A belfry or tower often divided the nave from the chancel especially in transitional period churches of the 13th century. In Askeaton the tower appears to have been built outside the church, North of the sacristy though hardly any trace of it now survives.

On the South wall of the chancel wall is the fine six stilled *sedilia* or wall seats for the use of the celebrant, deacon and sub-deacons during High Mass. Opposite on the North wall (of the choir) is inserted a carved panel depicting a Bishop, traditionally reputed to be St. Patrick. His hand is raised in blessing and has an out-turned crozier. His mitre and folded robe are typical of the 15th century. Across the chancel, near the *sedilia*, in the South-East corner is the 17th century Stephenson monument with an inscription in raised relief. There are a number of *trapezoidal* shaped stone grave slabs with incised crosses on their upper surfaces set in the floor about the chancel. These are 15th century in date.

One of the latest and most interesting monuments in the church must be the small thin slate memorial to John O'Driscoll and his son Edmond set into plaster in the West gable. This was inscribed or cut by Patrick Noonan in 1808 and is important for the little prayer in Irish which was added as an afterthought in the bottom right hand corner. It must be one of the few (if not the only?) example of the Irish of Askeaton of the early 19th century. It reads: "Mo léan a leac is maith o chéile gumhad/Dá thréine is go mbéadh fo faon (i.e. féin) san úr/ná flaibh an gaisge léim ná lúath/Sa t-Sionnion seag ó thaisgiogh Eamon fút".

To be continued



Askeaton Friary: Window in North wall of Choir of Church with cusped "flowing" tracery.

## SHANNON MEAT CHAT

By The Scribe.

- \* Congratulations to James O' Connor on his recent engagement. Somehow I guessed this would happen.
- \* I hear Anna is running for "Myles". (Funny, she never seems tired, except on Monday, when she doesn't even wake).
- \* Dan Cagney, John Stack and Sean Ban of SBB in a Shui, were seen together at the World Cross Country Championships.
- \* The Scribe wishes every bliss to newlyweds, Mr. and Mrs. Thomas O'Shaughnessy, for the future.
- \* I believe two members of a certain Department bypassed each other in a small Cork town. (Talk about Cha & Miah)
- \* Well done to our Rugby Team, even if you are all mad, on a great showing again this year. I'm proud of you.
- \* Every success to Mr. Bill Meade, who retired after many years of service on 13th April, 1979.
- \* Paddy Small is singing the praises (My God, what a voice) of his native Tipperary on their recent League triumph.
- \* Mr. Gerry Molyneux is now a fully fledged referee. There is no rumour that he has bought a pair of roller skates to keep up with the play. It was a Honda, but it ran out of petrol!
- \* Well done! Seamus Cawley on completing the Marathon (26 Miles) recently. A truly great feat. See, I can be serious when I want to.
- \* I hear that Sean Harnett was heartbroken after you all while in Dublin. A senseless young fellow.
- \* Welcome to Mr. Maurice Windle and Mr. Eamonn Mc Guire who have joined the Department of Agriculture Staff in Shannon Meat Ltd.
- \* Miss Maureen Cronin was at the Fool's Ball in Ballygarry recently, it was a great success. The Ball, I am referring to.
- \* From Accounts: Marguerite Power in her Renault nearly caused a bad (death) debt.
- \* "Britvic" says Tom White, sipping his favourite beverage.
- \* Rumour has it that for the past few months, a member of our Livestock Department, whose favourite song was "My Bonnie lies over the Ocean", has recently been heard singing, "Welcome Home".
- \* Miss Kathleen Burke and Miss Mary Ahern are two delightful new members in the Accounts Department.
- \* With the departure of a certain typist the Boy Garden (Gaelic Pitch) will not be opened as early each morning.
- \* Both Patch Markham and Pa Dunne have gone off their Currie of late. However, even Jack and Garrett were beaten by Leeds into Europe.

# PROFILE

— BILL MEADE



Mr. Bill Meade.

On 13th April, 1979, Bill Meade retired from active duties with Shannon Meat Ltd. A loyal servant, he was always ready and willing when work had to be carried out. This, the softly spoken, cordial gentleman of gentlemen did with utmost precision and diligence. We, the younger folk of Shannon Meat Ltd., will best remember Bill as he passed the rear office window, clad in a brown working overall, a utensil of some shape or form in his hand, Sean Guiry at his side and the remainder of the Building Maintenance trooping behind. The harmonious personification with which this diminutive little group went about their day's chores was a pleasure to witness.

## MARKET TOWN

Bill Meade was born in Kilmallock. Here, in this famous market town, he grew up, receiving a standing Primary education. (This is not to say they hadn't any seats). Bill then went in search of his fortune. He didn't tell us whether he made it or not and we will not pry into his privacy.

Barrigone was his first stop and it was here, along by the picturesque Shannon Estuary, he spent a number of years, farming. Having had enough of the sea air, the youthful

farming practitioner moved further inland as far as Newbridge, a few miles South-west of Rathkeale. Around this side of the country (it must have been the healthy air) Bill worked with a number of different farmers.

## CONTACT

Around 1950, Bill Meade made his first contact with Shannon Meat Ltd. To say the very least it was slightly different to the Shannon Meat Ltd. we have now come to know. Bill then was in the employment of Building Engineer, Charlie McDonnell. Their task was only to renovate a nineteenth century workhouse into a Processing Plant. Needless to say, they completed their task rather satisfactorily. Bill also was involved in the construction of the local reservoir.

In 1961, Bill Meade joined Shannon Meat Ltd. During his lengthy spell with the Company, he has, at one time or another, operated most of the varied processes. He has had spells in the Red Offal, Freezers, Trimming Sections, to name but three. During the off-season Bill used to work in the Building Maintenance and it was his natural inclination for this type of work that resulted in his going permanent to this Department.

## FAMILY

Bill Meade is married to Rathkeale woman, Anne O'Donnell. The Meade family reside in Boherbuoy, Rathkeale and are one of Rathkeale's most respected families. They have three daughters, Anne, Mary and Catherine (wife of our own, very own, Billy Crowley of the Boning Hall), and four sons, Bill (Jnr.), Patrick, Francis and Michael, who is better known as 'Speedy'.

I know everybody in Shannon Meat Ltd. and in the local community will join with me in wishing Bill Meade every future happiness and bliss.

# RATHKEALE'S FIRST SOCCER TEAM



"Ready to Go" are Rathkeale's pioneers in Soccer.

Back Row: (Left to Right): Mike Smith, Liam Dunne, Ml. McNamara (Slaughter Line), Miko Dunne (our Reporter), Mike Dillon, Mossy Woulfe and Johnny Jones.

Front Row: (Left to Right): Liam Woulfe and Christy Jones (both of Slaughter Line), Seamus Tierney and Vinny White.

Absent from this photograph is Team Trainer, Jimmy McGrane who is Parish Clerk of St. Mary's Church, Rathkeale.

This priceless picture was taken in 19..? Johnny Jones is presently Captain of the Club. Liam Woulfe participates in every other sport except Soccer — a true sportsman. The remainder of the group, have for one reason or another, become dormant on the playing fields, but not behind the scenes of their favourite codes. Ml. Dillon is mainly responsible for Rathkeale's supremacy in under-age Football.

Ml. McNamara is taken up with promoting our local Athletic Club

as is the latter. Michael Dunne is a key figure in the Soccer Club. Vinny White is active with Newcastle West G.A.A. Club. A prominent member of the Pitch and Putt Club is Seamus Tierney. Christy Jones is busy at training his greyhounds. Finally, Mossy Woulfe has the simple task of Coaching his skilful youngsters, (John, "Chester" and young Michael) the finer points of the game. It should not be too long before they appear in our sports page.

This photograph was hidden in the archives of a certain nameless household for many a day because of a certain "ban".

## SYMPATHY

Sympathies are extended to Mr. Tom Hannafin of the Slaughter Line, on the recent death of his mother. Condolences are also extended to the other members of the Hannafin family.

## NEAR ACCIDENTS ARE WARNINGS



STAY OUT FROM UNDER SUSPENDED LOADS

## DIM WIT

- \* When he told his wife he'd been elected, she cried, "Honestly?". He answered, "Why bring that up?"
- \* He chose politics as the most promising of all careers — and is he good at promises.
- \* His latest campaign speech was interrupted thirty times by applause.
- \* He'd never run for office if he weren't paid by the year. He'd starve to death on piecework.
- \* For his last birthday she gave him a present that really made his eyes pop out — a shirt with a collar two sizes too small.
- \* Before he married her, he thought she was a shrinking violet. Now he knows the word should have been — "shrieking".
- \* He should have been warned when he attended the funeral of her first husband — the corpse had such a relieved look.

# VICTORY HURRAH !

"This is Rugby Season so there isn't any reason" ..... I have left the conclusion to yourself. The players pending their state of health (assuming all are alive and well) can put their own special relative ending to this.

By now, I am sure you have gathered that I am discussing Shannon Meat Ltd.'s second entry into Inter-Firm Rugby. Last term we were joined with Scanglo, but to involve everybody we decided to go it alone this year.

As was the case last year, we again reached the final. This time we succeeded where we failed last year. We defeated a gallant Castlemahon XV, 7-3 in a memorable final. Inspired by the influential prowess of Captain Dan Cagney, John Lynch, D.J. Madden, Turlough McDonald and try scorers James O'Grady (to mention but a few) the victory gave cause to unprecedented scenes of delight from a very large bunch of enthusiastic supporters. (Never before in any code were there so many).

## PATH TO THE FINAL

Shannon Meat Ltd. : 13

Scanglo : 3

S. Harnett (try, pen, con.), D.J. Madden (try).

Shannon Meat Ltd. : 7

Castlemahon : 0

T. White (try), J. O'Sullivan (pen).

Shannon Meat Ltd. : 3 Farmers : 6

S. Harnett (pen).

Shannon Meat Ltd. :

Post Office : —

Victory by Default.

Shannon Meat Ltd. : 13

Town Traders : 3

N. Harnett (try), Ml. Reidy (try), J. O'Sullivan (pen), S. Harnett (pen).

## FINAL

Shannon Meat Ltd. : 7

Castlemahon : 3

S. Harnett (pen), D. Herlihy (dropped Goal), J. O'Grady (try).

The team that did Shannon Meat Ltd. proud was:-

Turlough McDonald (15), Patch Markham (14), Johnny O'Sullivan (13), Tom White (12), Noel Harnett (11), Sean Harnett (10), John Lynch (9), Tom Daly (1), Willie Madden (2), Liam Woulfe (3), Brendan Kennedy (4), Dan Cagney (5) Capt., Cecil Haskett (6), D.J. Madden (8), James O'Grady (7).

Subs: Anthony Frawley (16), Miko Dunne (17), John Lyons (18), Seamus Cawley (19), Joe Lynch (20).

# SOCCER SCENE



## CUP FINAL ONCE AGAIN

By the time you read this article, our Cup fate will have been decided, but right now the Club is buzzing with excitement and we are eagerly looking forward to Cup Final day. Pallaskerry fell in round one, followed by Ballysteen in round two, Kilcolman provided the opposition in the semi-final, and after drawing the first game, we won the replay 3-1. So what are our chances in the Final? We play Askeaton whom we have already played twice in the League with the honours even. They beat us on their own ground by 2-1, but we took our revenge by beating them 6-1 at home. After beating Kilcolman in the semi-final, we will start hot favourites but we must guard against complacency. When Cup Final day arrives, I am sure Pa Sheehan will have the players in the right frame of mind and ready to give of their best on the day. With one game remaining in the League we are already assured of the runners-up spot. The League, of course, was won by Kilcolman.

## MATCH REPORTS

**Kilcolman : 1      Shannon Utd. : 2**

For the second year running, we took the measure of Kilcolman on their own ground. This was a typical Kilcolman/Shannon Utd. game, hard fought with the issue in the balance right to the end. Kilcolman were first to score and led 1-0 at the interval. Eamon Daly had us level early in the second-half and Seamus Doherty scored the winner. This was Kilcolman's only defeat in the League.

**Shannon Utd. : 5      Ballysteen : 0**

We met the leaders of the second division in the second round of the Cup and the gulf between the first and second divisions was clearly underlined. Noel Harnett, from the spot, gave us an interval lead, and it was all too easy in the second-half. Noel went on to complete his hat trick, with further goals from Mike Meade and Sean Harnett.

**Shannon Utd. : 6      Askeaton : 1**

A gale force wind, blowing straight up the pitch, made conditions very difficult for the players. Askeaton had the wind in the first half and when the interval arrived, they had a slender 1-0 lead. An early goal was what we needed in the second-half, and after a few minutes, Seamus Doherty broke away on the right and fired in a great goal. From a corner, Johnny Jones gave us the lead and then the flood gates opened. Goals from Sean Harnett (2), Noel Harnett and Seamus Doherty again completed the scoring.

**Shannon Utd. : 5      Glin : 0**

We clinched the runners-up spot by taking both points from a very weak Glin side. We led 2-0 at the interval with goals from Seamus Doherty and Mario Zoncada. Ace marksman, Sean Harnett, killed off Glin with a third goal early in the second-half. Eamon Daly and Seamus Doherty completed the scoring.

**Shannon Utd. : 1      Kilcolman : 1**

A large crowd turned up to see the battle of the giants in this Cup semi-final. This was a game of two halves. We dominated the first half and led 1-0 at the interval. Noel

Harnett, scoring mid-way through the half. Several other good chances were wasted. There was a complete transformation in the second-half with Kilcolman well on top. Full credit to our over-worked defence which conceded just one goal in this hectic period, and so we lived to fight another day.

## RE-PLAY

**Shannon Utd. : 3      Kilcolman : 1**

We had to take the pitch without Frank Lynch who was injured in the drawn game. A fiercely struck free kick gave Kilcolman an early lead. That goal acted as a spur to our lads and we were gradually getting on top. Mid-way through the half, Johnny Jones scored following a corner and Eamon Daly shot us in front a few minutes later. Into the second-half and back came Kilcolman with all guns blazing. This time, however, there was no way through and Noel Harnett settled it with a late goal. This was an outstanding team performance and it was fitting that it should take us into the Final.

**Watch It Grow: Harnett, S (17); Harnett, N (8); Daly (6); Doherty (6); Butler (5); Jones (4); Gallagher (3); Meade (3); Chawke (3); Sullivan (2); Zoncada (2).**

Michael Dunne.

## INTER-FIRM SOCCER

In the last edition of the *Gazette*, I pointed out that we had entered a team into the Inter-Firm League in Limerick. However, our plans did not turn out as expected. Because of too many entrants we were one of the Clubs refused permission by the Limerick Branch, however, many of our associate firms in West Limerick were in a similar position and this resulted in the formation of the West Limerick Inter-Firm Soccer League. On this Board Shannon Meat Ltd. are represented by Miko Dunne and Jack Lyons.

The League is comprised of eight teams. They are:-

**Castlemahon, Nashs (Newcastle West), Southern Chemicals, McMahon's (Foynes), Cunnane's (Foynes), Wyeth, P. & T./Salemink (Newcastle West) and ourselves.**

At the time of going to press, Shannon Meat Ltd. have beaten Wyeth's of Askeaton 6-2. It was not as impressive as the score line suggests and flatters the locals.

Our team for this historic first match was:-

**Jack Lyons, Liam Woulfe, Tom White, Noel Harnett (Capt.), Don Gallagher, John O'Sullivan (1), Dan Cagney, Mario Zoncada, James O'Grady (2), James Kenrick, Sean Harnett (2).**

**Reserves: John Lynch (1) for Liam Woulfe (Inj.), Frank Dalton for Sean Harnett (Inj.).**

As is the case with all Sports Bodies within the Company, we are indebted to the generosity of our Employer, without whose ceaseless aid many of our Sports Bodies would now be defunct.

Published By :-

**SHANNON MEAT LTD,  
Rathkeale**

And Printed by :-

**ORIEL PRESS LTD,  
CHARLEVILLE**

## ABBEY PITCH & PUTT

By Chipper.



Mr. Maurice Curtin.

The Club have organised a number of competitions for a weekend (yet to be decided) in June. These competitions will be held on the same weekend. The first Tournament is to select a Ladies and Gents Captain for the Season. It goes without saying, hopefully, that the female members will play for the Ladies prize and the Gents theirs (seems logical — let's hope I got it right). The second event will be a Club Tournament and the Ladies and Gents can play for whatever they like. I am sorry to say only members will be allowed to compete; (so is the Treasurer).

I am glad to relate that the Course is now open and has been since April 15th. The Course is in great condition — I do not apologise for saying this every year. Thanks to the trojan work of Liam Woulfe and Tommy Steele, who in their spare time from heated Soccer debates, have mowed the greens and Fairways again and again.

## REMINDERS

- Annual Membership Fees are now due.
- Our Open Competition which was such a success last Season, will be held from the 10th-12th of August.

## WISHES

We wish Maurice Curtin (Canteen), first member of 1979, the best of luck and hope to see him in the Winning Group with yours truly, Chipper, this year.

Best of luck to Putter (seems sincere) in the Ladies Captains Prize.

## THANK YOU

- "Thank you" to all those who subscribed to our Church Gate Collection recently.
- Thank you, Frank, for the sand. (The beach is now looking lovely and Putter has loads of castles made.



Tom White, Left Full-Back.

## G. A. A. CLUB NEWS

By Michael O'Neill, Secretary.

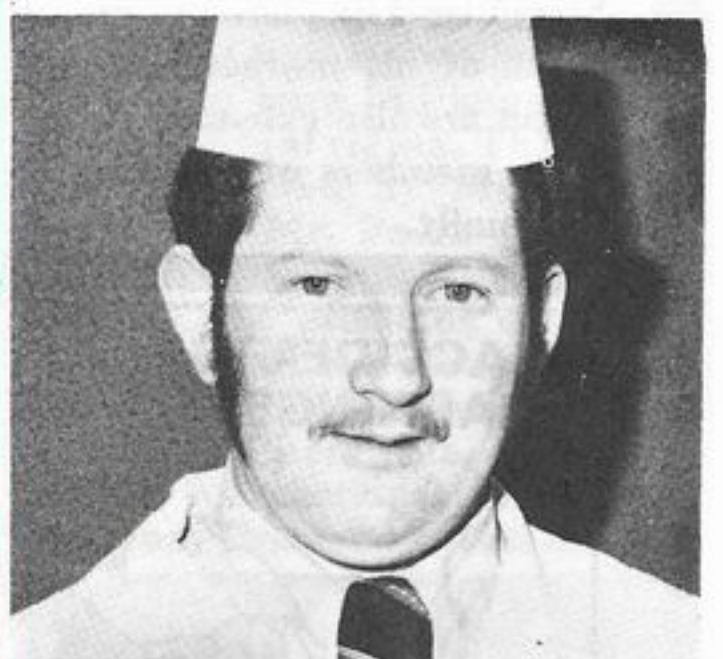
At a recent Inter-Firm County Board Meeting, the draws for this Season's Championships were made. The competition this year appears to be much stronger with the arrival of new Clubs; such as the Gardaí from Limerick, the Teachers also from the Limerick City area, Europak and a team from Alcan has been registered. These teams will introduce players of great fame to Inter-Firm competitions for the first time. The Gardaí will have Paud O'Shea of Kerry on the Football team while they will have Mossy Walsh of Waterford on their Hurling side. The Teachers will introduce the Kerry Captain, Ogie Moran, to his first taste of competition here in Limerick, as we all know, Ogie has ties with Limerick. The presence in the Inter-Firm ranks of these players can really help to increase the interest in our games.

As stated by a player in the last issue of our *Gazette*, interest in our own Club seems to be dwindling. I am sure that our players, when they realise they now have the opportunity of competing against some of the best Hurlers and Footballers in Ireland, their spirits will once again arise just as the "Phoenix rose again from its own ashes".

Our first outing of the year is against our great rivals, Castle-mahon. This is the first meeting of the two Clubs in Football and is certain to get the adrenalin flowing. If this game comes near the standard that both Clubs usually reach in Hurling then we can be sure of a real cracker. I would like to ask all our players and supporters to renew their interest in the affairs of the Club.

I would like to take this opportunity in wishing Gerry Molyneaux every success in his new rôle as a referee for the West Board. Gerry has long been a member of our Club and for some years was an active member of the Committee. I am sure you will all join with me and wish him the very best of luck.

I will have match reports in the next issue.



Mr. Gerry Molyneaux.



John Lynch, Centre Forward.