



OPINION

ADEQUATE PROFITS ARE VITAL TO THE INDUSTRY

TAX THREAT

The following is an extract from the Chairman's address at The Annual General Meeting of the Shareholders of Shannon Meat Ltd., held on 28th November, 1977.

"Additional capital expenditure on necessary new and improved facilities as well as greatly increased working capital requirements made heavy borrowing unavoidable. High interest rates during the past year were a severe strain on profitability.

The Minister's promise to untax the Co-Operative Meat Plants in his January Budget will place this Company at a considerable disadvantage. It should be remembered that the private sector is rendering a service to the farmer in the very same way as the Co-Operatives and for that reason should be treated similarly for taxation purposes.

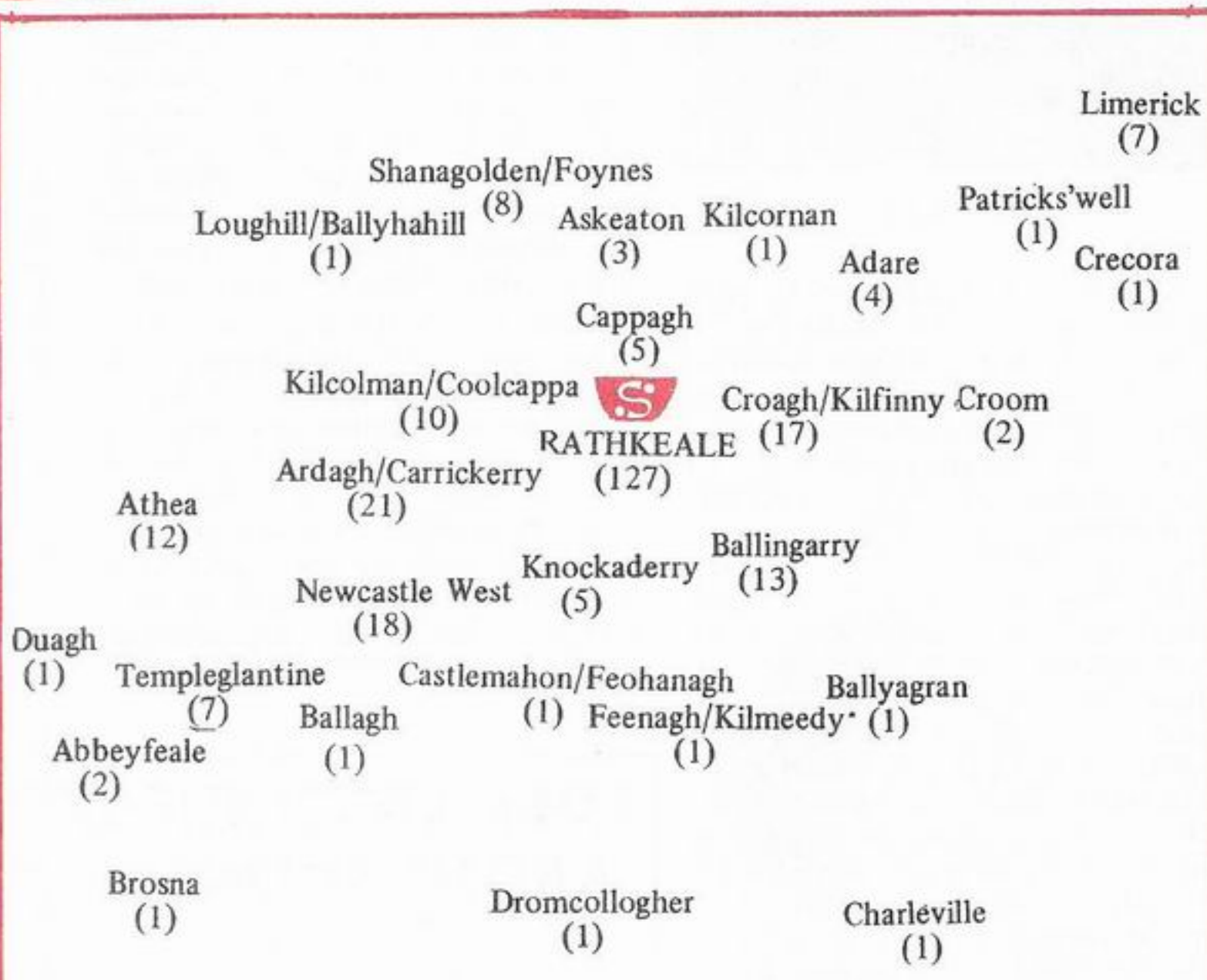
Discriminative tax legislation of this nature must adversely affect the long term prospects of your Company.

The outlook for the trade in the coming year is as difficult as ever to predict and one can only hope for greater stability in both supplies and prices.

Once again, it is my pleasure to pay tribute to Management and Staff for their devoted service to the Company during the past year".



Mr. Frank Wall, Chairman of Shannon Meat Ltd.



The above chart analyses the areas from which the Company draws its work force at present. Rathkeale area caters for 47% of the total of 273, with the surrounding parishes of Ardagh/Carrickerry, Kilcolman/Coolcappa, Cappagh, Croagh-Kilfinny, Ballingarry and Knockaderry amounting to 26%. Outside of this immediate area, the main contribution comes from Newcastle West, Athea, Shanagolden/Foynes and Templeglantine, amounting to 16%. This is an analysis of the full time staff employed within the factory. Twelve part-time employees are not included.

We find it difficult to control our irritation when statements are made accusing the Beef Industry of making excessive profits. The annual accounts of four of the companies out of a total of eighteen, are published for all to see. Over the past two financial years, two of these have shown serious loss situations, the other two, of which Shannon Meat is one, have shown, after tax profits on sales hovering around one per cent. In no way could the Industry survive for long in a viable condition on such margins. The constant propaganda and pressure being put on the Industry to pay higher and higher prices for its raw material will, if it continues, have disastrous consequences. The pretence by some individuals, organisations, different Ministers for Agriculture and their advisers that magic formulae are available in the marketing and production areas, which if properly exploited would lead to still higher prices, is pie in the sky. Why not look over their shoulders at other businesses in the Agricultural sector and compare profit margins? Repeating the obvious, a reasonably high level of profit is essential. In the premier sector of the international food exporting business, buildings, plant and procedures must be to international standards. Employment must be secure and increasing. Obligations to suppliers and to the community must be met. Low or non-existent profit margins lead to run-down buildings and plant, discontented employees and frustrated management having one eye on how to leave a foundering ship. The implications of such a situation for producers and feeders is too dire to contemplate. It is our frequently stated view that critics of the trade, particularly Ministerial critics, should, when it applies, name particular companies or factories and not the trade as whole. The latter attitude is being much too safe politically. After all, any of the ills or shortcomings implied or enshrined in these criticisms over the past four years, were and are within the competence of the Minister for Agriculture to adjust, curb or cure.



Shannon

WE GIVE EXTENSIVE SERVICE TO HOME FREEZER CUSTOMERS

- Supply special Home Freezer prime beef pack.
- Supply prime hind and fore-quarters as requested.
- Process your own stock to your own specifications.
- Supply top quality lamb packs.
- Give specialised advice on Home Freezer maintenance.

Meat for your Home Freezer supplied by Shannon Meat Ltd, is processed under modern beef processing techniques, ensuring top class quality, proper maturing, cutting and packing under the most hygienic conditions and blast freezing to ensure meat is frozen solid in the shortest possible time.

For full particulars contact :-
The Home Sales Manager,
Shannon Meat Ltd.

We Wish All Our Readers A HAPPY AND PEACEFUL CHRISTMAS AND A PROSPEROUS 1978

Slaughtering operations will cease on Wednesday, 21st December and will resume on Tuesday, 3rd January.

Livestock will be accepted up to and including Monday, 19th December. Livestock will not be accepted after this date unless pre-advised to do so. The Livestock Department will re-open for enquiries and bookings on Monday, 2nd January.

E.E.C. FINDS GREAT DIFFICULTY IN MEAT DISPOSAL

Recent meetings of the EEC Beef Management Committee have confirmed the difficulties which the Community is facing in disposing of its vast and ever-increasing beef mountain.

The regular monthly boned and canned beef tender has again

aroused little interest. Out of 5,400 Tonnes of boned beef on offer, the EEC accepted offers for 1,500 Tonnes. Interest in the canned beef tender was even less: 800 Tonnes were sold out of 6,000 Tonnes on offer.

Commission beef experts expect the regular monthly fixed price sales of boned and canned beef will be equally irrelevant in the context of the 400,000 Tonne beef mountain. These sales commenced on October 17th and 24th respectively.

2 YEARS OLD



This is the Second Anniversary Edition of the "Shannon Meat Gazette". This does not interest our young 2 year-old reader above, whose favourite section appears to be Michael Dunne's "Soccer Scene".

We express our appreciation to the many contributors over the past two years. They assured our success.

ON THE MOVE



Donie Ahern.

On the move is Donie Ahern. Donie is the newly appointed Livestock Field Officer with the Company.

Donie hails from Templeglantine (where it seems the best of our staff originate from). He joined the Company in September, 1970 and has been with the Company since. Prior to taking on his new position, Donie was responsible for cattle cheque payments. He was also responsible for the administration of the Employees Personal Accident & Sickness Scheme.

In his new capacity of Livestock Field Officer, Donie will make contact with suppliers and potential suppliers of livestock. He will inform and discuss with them the livestock procurement policies of the Company. Also, he will discuss prices, inform the outside community of our Deep Freezer Service and other topics of interest. This position is solely informative. He has already on-going communications with many who have in the meantime become suppliers, or are potential suppliers.

TRAINING

Prior to Donie assuming his new position, he underwent an intensive in-company training programme. This made Donie conversant with deep freeze cutting, specifications, quality control, etc. Coming from a farming background and possessing some very choice cattle, ensures Donie's success in this important position.

PROFILE - SEAN GUIRY



Sean Guiry.

On the 4th April, 1977, Sean Guiry reached his twenty-fifth year, to the day, of his association with Shannon Meat Limited. The softly spoken Castlematrix man was involved in the construction of the premises. He was a working-time-keeper with Building Contractor, Mr. McDonald. In April, 1953, Sean started with Shannon Meat and has occupied number two position on the seniority list since, being second only to Paddy Cawley. In those early years, Sean operated both in the Production and Maintenance Departments. In 1960, Sean became permanent in the latter mentioned department. He tells us that he enjoyed working in the various processing sections, whether it be the Slaughter Line, the Boning Hall or the Loading Section.

Block by block, many of them laid by himself, Sean has seen the historical ruin of a once three storey work-house developing into a modern twentieth-century processing plant.

ONLY SON

Sean Guiry was born on July 30th, 1925 in Lower Main Street, Rathkeale. He was the only son of a family of five, having two sisters older and younger than him. His late parents were Patrick Guiry and Minnie O'Neill and his mother was a niece of the famed athlete, Michael O'Neill. Sean was educated at the local Boys' National School where he was taught by Bill Boyle, John Madigan and J.J. Connellenan. Two of Sean's classmates were Tom Glenny and Jack Lyons, both of whom now are employees of Shannon Meat. Other school contemporaries were character extraordinary, Jackie Shiels and Joe White, brother of Dom White. Sean attended the town's Secondary School for two years; this building is now the Library. What does Sean remember of Rathkeale as an adolescent? "It was a town of little or no employment. The only two employers being the Bakery [P.B.R.] and the County Council. Except for a weekly picture show and the odd appearance of a travelling show, we made our own amusements". (I wonder what type of amusement he meant).

On leaving school, Sean worked for a local farmer, Tom Mulcahy. His farming career was destined to last for six years and his weekly basic wage, exclusive of bonuses, overtime, commission - amounted to ten shillings. After this, he worked with the County Council

and on the Railway for different periods.

SPORTS ENTHUSIAST

Sean Guiry is very much a sports enthusiast. As a youth, many hours would be spent hurling and kicking football in some farmer's field. The final whistle to these games would be the yell of a monstrous farmer, clad in very shaggy attire, or else the continuous barking of a particularly vicious dog, hot on the heels of the young sportsman; the end result was always a good cross country run. In 1952, Seanie was a member of the Rathkeale Junior Football Team that won the West Limerick Championship. Assisting prominent referee, Gerry Fitzgerald, Sean was umpire for six National Hurling League Finals, a number of Munster Finals and several county finals throughout Munster.

Sean Guiry the man, portrays some very fine characteristics. If all were to be listed, then I would probably require the next page of this "Gazette". Briefly, one would say of Sean that he is genteel, quiet, reserved, very trustworthy, a dedicated worker, etc., etc. Sean by nature, I would imagine is slow to make friends, but once a friend, would be an extremely good friend.

FORK LIFT TRUCKS ARE DANGEROUS



Fork Lift Truck Drivers, in the interest of safety:-

- 1] Don't allow passengers on your truck.
- 2] Drive at a speed consistent with the prevailing conditions.
- 3] Remember others work in your area, be on the look-out.
- 4] Do not alight from the truck until it is properly parked.
- 5] Do not allow anyone to pass under the forks when they are raised.
- 6] Slow down at corners, or blind spots, or where people are working. Let other people know what you are doing, sound your horn - a few short blasts have more effect than a continuous tone.

MURPHY'S LAW

Along with the other inevitable laws of this world, such as the Law of Gravity, is Murphy's Law. It's been on the books of human behaviour for quite a while, but maybe anyone having anything at all to do with safety should be reminded of it every so often. It goes something like this:-

- 1] If it ("it" being any piece of industrial equipment) can fail, it will. 2] If it fails, it will be at the worst possible time and place. 3] If it can be hooked up wrong, someone will do it that way. 4] If it can be operated incorrectly, someone will operate it that way.

SHANNON MEAT CHAT

By The Scribe

The following staff members have taken preventive action against the forthcoming cold weather:-

- * Dermot Hannafin and Kathleen Murphy (Askeaton), were recently married. The Retort Room is not the only place with a high temperature, I would imagine.
- * Dick Sheehy and Alice Healy were married on the 15th October. No wonder Dick can't wait to get out of the icy cold Fridge to go home to a nice warm meal and fire !!
- * John Reddin and Mary Shine of Ballyhahill were wedlocked on 29th October.
- * Cecil Haskett heard wedding bells tolling for him also, on the 29th October.
- * Request Time - Paddy Small's favourite tune is "It's a long way to Tipperary", while his favourite hurlers are singing "It's a longer way to Croke Park".
- * Congratulations to Tournafulla man, Pat Sheehan, on his recent engagement.
- * During his recent trip to England (supposedly to see a soccer match), Seamus Cawley was very impressed by the local scenery, some only of which he had seen in "Paddy's Land".
- * Congratulations to Mr. and Mrs. James Dowling on the birth of their daughter.
- * James Power of the Boning Hall, Dermot Hannafin informed a good friend of mine, has an exceptionally keen interest in the calf-trade.
- * For the ninth occasion, the Dinner Dance was an immense success.
- * Gary Forde enjoys going to night-school, no prizes for guessing that the classes are mixed.
- * Proud man around the factory these days is Denis Kenneally, whose wife, Margaret, has presented him with a son.
- * Nellie Cahill, is forever singing, "We'll go gathering Nuts in May" while his good friend Christy O'Dwyer can't sing, but croaks, "It's nice to be in love again".
- * Jack Lyons was very disappointed that his name did not appear in the last edition of the "Gazette". My apologies Jack.
- * Congratulations to Andy McMahon, (featured in our last edition) on his recent engagement to a certain local girl, Geraldine Frawley, who is a sister of certain local boner, Anthony.
- * "The Joys of Love" sings a certain Department Official of his feelings for the girl with the long golden hair.
- * The Scribe once again, extends his Christmas Greetings to everybody.



PICTURE PARADE



Attending the 9th Annual Shannon Meat Dinner Dance on November 19th, were (L to R) : Kitty Guinane, James Moone, Irene Moone and Pa Guinane.



PICTURE PARADE



Tom White of the Boning Hall and his wife, Peg, attending the Annual Social in their native Templeglantine.



Engaged Couple, Willie J. O'Donnell and Miriam McNamara, enjoyed the Annual Social at The Devon Inn.



Relaxing over a Drink at the 9th Annual Dinner Dance are Staff Members Michael Kelly and Batty Collins.



Pictured above, are Breed Sheehan (Accounts Department) and John Collins who announced their engagement at the Shannon Meat Dinner Dance.



Mr. Sean Mulcahy, (No Relation of John A. of Waterville), and his wife, Josie, photographed at the Devon Inn on November 19th.



Michael and Mary Morrissey, relaxing after an excellent meal provided by the staff of the Devon Inn on November 19th.



Garry Forde B.A., H.D.E., (Left), who recently joined Shannon Meat Ltd. as Trainee Marketing Executive and Denis Duggan, B. Comm., who joined us as Trainee Cost Accountant.

ASPECTS OF LIMERICK'S PAST

THE ARDAGH CHALICE

By Patrick F. Wallace.



THE ARDAGH CHALICE; about 700 A.D. (Photograph by permission of the National Museum of Ireland).

The Ardagh Chalice is universally acclaimed as one of the finest examples of Early Christian Art from Dark Age Europe. It is the most splendid specimen of the metalworker's skill and virtuosity to have survived from a "Golden Age" in Ireland which produced many vessels, reliquaries, brooches and ornaments. It is unparalleled in the richness and variety of its decoration and is ranked with the Tara Brooch among metal objects, the Book of Kells and Durrow among illuminated manuscripts; and with the finest stone sculptured high-crosses as representing the heights reached by Irish Art in the centuries after the arrival of Christianity. This was a time when Ireland had great centres of learning at its monastic cities, and monks who lived in ascetic isolation as well as scholars who preached all over Northern, Western and Central Europe.

The Chalice is one of the most famous exhibits at the National Museum of Ireland, Dublin, and was recently displayed in Cork at a special "Treasures of Munster" Exhibition which also included other items from Co. Limerick. It is now gone to the United States as part of an exhibition of Irish Treasures among which it will be the centre of attraction.

It is not always realised that the Chalice was found in 1868 in a ring-fort or rath near the village of Ardagh in Co. Limerick. It was discovered along with another, lesser Chalice and four ring-brooches by a boy digging for potatoes.

The Chalice is dated on stylistic and art-historical grounds to the early eighth century (i.e. about 700 A.D.) and was a Holy Communion Chalice. It consists of a two-handled, round-bottomed, silver bowl and a silver, conical, flanged (a hammered out ring) base separated by a short straight stem. The base and bowl are held together by a bronze pin, the domed head of which is gilt (or covered in gold) and may be seen inside the base of the bowl. The stem of the pin is secured by a cotter-pin at the apex of the base - the latter arrangement being concealed by a beautiful glass crystal in a gilt-bronze mount under the base. The bowl and base are each hammered out of a single piece of silver, and the stem is fashioned out of gilt-bronze.

THE BOWL

The bowl bears two flanged (hammered edges) handles below which are escutcheons or mounts. There are also decorated silver roundels or medallions, one on either side, on the sides between the handles. A gilt bronze rim is riveted to the bowl. Below it, a

silver girdle encircles the bowl, being so tightly fitted that no rivets were used to attach it. The girdle is decorated by punchmarks and divided into twelve sections by blue and red glass studs which have silver grilles set into them. Panels of gold wire or filigree are inserted into the sectors between the glass studs. The filigree is formed into patterns of interlacing. The interlacement or intertwining of lines is of three types:- plain, zoomorphic (resembling animals) and ornithomorphic (resembling birds). The silver medallions on the sides of the bowl are attached by means of rivets which are concealed by glass and amber studs. The medallions are divided into panels of gold foil on which gold wire patterns are applied. The handles have a central row of gold filigree panels flanked by rows of red and blue glass insets. The handle escutcheons or medallions have three large glass studs each with a grille dividing it into segments of different coloured glass. One of the studs has an arrangement of gold drops or granulation at its summit. Like the side medallions, the escutcheons are divided into panels with a gold foil background on which gold wire interlacings are set.

The names of eleven of the Apostles and Paul, who is substituted for Judas, are incised or cut into the silver bowl below the girdle.

THE STEM AND BASE

The stem consists of a gilt bronze chisel-carved pattern of interlace, the flanges at its top and bottom bearing scroll and triskele patterns, borrowed from the native Celtic art repertoire just as the interlacings which occur elsewhere were of more recent introduction to Ireland from the continent. The underside of the base is characterised by a rock crystal at the top. This camouflages the cotter-pin holding the pin which secures the base to the bowl. The rock crystal is set at the centre of a gilt-bronze, circular mount which is comprised of bands of ornament including one of amber, one of interlocked spirals and one of interlace.

The flange of the base bears a silver ring above and below it. Decorated panels of silver, copper and gilt bronze are set into these rings, the panels being separated by square studs of blue glass. The Chalice rests on eight studs of blue glass which are backed by small silver plates with embossed geometric designs. These designs can be seen through the glass when the Chalice is held aloft.

THE HOARD

Apart from the famous Chalice, just described, the Ardagh hoard also consisted of a small undecorated bronze Mass (?) Chalice, three silver gilt brooches and a silver "thistle" brooch. The three ring brooches which are of the same type as the Tara Brooch, are of gilt silver, the largest being richly ornamented with panels of interlacing and having two stylised birds raised in relief. The two decorated surfaces of the smaller brooches are gilded and their pin-heads and decorated areas are characterised by lozenge-shaped recesses into which gold filigree mounts were originally set, though only one of these has survived.

The chalices and the three-ring

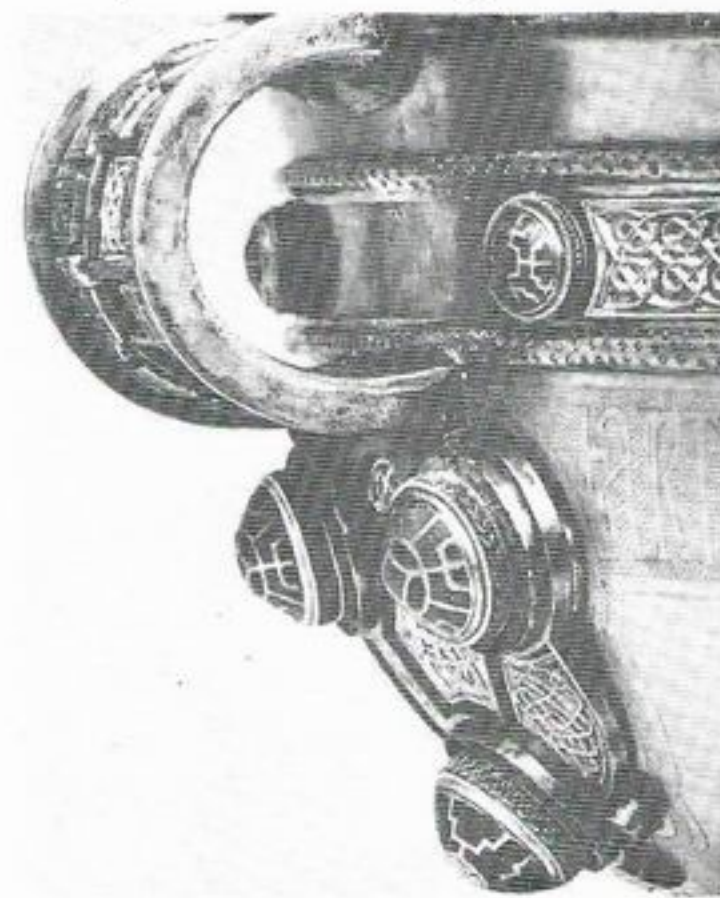
brooches date back to the early eighth century (about 700 A.D.) and the fourth brooch, a silver "thistle" brooch, is of a viking type and belongs to the 9th or 10th century. It is called "thistle" because of the characteristic projections on its knobbed terminals or ring-ends.

The inclusion of a 9th or 10th century item with the chalice and brooches meant that they were probably deposited in the side of the ringfort at Ardagh about a century or so after they were made. While we will never know exactly why and when these objects were buried, it is probably fair to assume that they were the property of a monastery, from which a monk may have stowed them away during a raid by the Vikings or a hostile Irish Chieftain. The fact that they were buried for safe-keeping at Ardagh doesn't mean that they were either made or used at Ardagh though whoever buried them probably didn't travel very far.

IMPORTANCE

The Ardagh Chalice is one of the world's great works of Art and Ireland's most famous treasure. It is a creation which represents the perfect compromise between form and decoration, and embodies all the contemporary skills of the metalworker, including gold filigree or wirework, gilding, gold granulation, the use of glass and amber. It represents the perfect merging of native Celtic Art and Technology with intrusive post-Roman Germanic motifs and techniques. Limerick people should be proud that it was found in this area as it shows that an object of unique beauty, dedicated to the God, for whose worship it was

made was venerated and preserved here for the inspiration of future generations over thirteen hundred years ago. It is also a reminder of the heritage which may be concealed in our ring-forts or raths (the residence of our Early Historic ancestors) which should not be wantonly destroyed, especially in the name of progress. The discovery of the Ardagh hoard in such a field-monument means that the National Museum should be informed of the impending destruction of any such monument, that bulldozing should be avoided if possible and archaeological investigation of the site be undertaken where destruction is necessary. Recent discoveries at raths in Aughanish Island, Sluggery (near Limerick) and Croom, show the wisdom of such precaution. After all, the person who deposited the Ardagh Chalice made an act of faith in the enlightenment and appreciation of future generations such as ours. We shouldn't disappoint that faith by destroying what remains of our unique cultural heritage.



ARDAGH CHALICE: Detail showing Flanged Handle, Silver Girdle, Escutcheon with its three Glass Studs, with Inset Silver Grilles and part of the name of St. Bartholemew incised into the Bowl. [Photograph by kind permission of the National Museum of Ireland].

NEW APPRENTICES



Thomas O'Brien.

Thomas O'Brien (above) joined Shannon Meat Limited on 6th October, as an apprentice carpenter. He was the successful applicant for the advertised position.

Tom hails from Knight Street, Ballingarry and was born on April 16th, 1959. A son of Daniel and Catherine O'Brien and is the fourth member of a family of seven which consists of five boys and two girls.

Thomas received his early education at the Boys' National School, Ballingarry. Under the guiding influence of Michael Brosnan, he passed the Leaving Certificate at the Vocational School, Rathkeale. It was while attending this school that Tom's taste for carpentry and woodwork grew.

Thomas O'Brien, to say the least, has two very different hobbies as compared to boys of his age. These interests are gardening and beekeeping. We wish Thomas every success with the Company.

The second of our new apprentices is Beverly Lowes (pictured below). Beverly is a native of Ballingrane, Askeaton and is the eldest child of Peter and Elsie Lowes. He has both a younger sister and brother. Now eighteen years old, Beverly was born on the 20th March, 1959.

His early education was received at the No. 2 Primary School, Rathkeale. St. Mary's Secondary School, Askeaton, was his next stop. In this establishment, the young Lowes boy acquired a high standard of second level education which enabled him to successfully sit the Leaving Examination.

This in turn assisted him in being successful in his application for the position of Apprentice Fitter with the Company which he commenced on October 4th.

Car racing and motor mechanics are Beverly's main pursuits outside of work. We wish him also every success in the future.



Beverly Lowes.

LIVESTOCK TOPICS

By Donie Donovan,

Livestock Procurement Manager.

LIVESTOCK BOOKINGS

In the Livestock Department, we are constantly up against situations where producers with stock to dispose of, tend to arrange movement permits with their respective District Offices first, and they then come along to the factory to book in their stock. The reverse should be the case of course, giving a more even flow of stock and greater efficiency all round. Animals should be booked at the factory first and movement permits arranged immediately after. Another problem area is where there is a great lack of understanding with some producers of light heifers and bullocks that need to be disposed of during their store period. As a majority of these animals are processed as manufacturing beef, which is mainly cows' beef, they have to be priced as such.

CALF PRICES

Calf prices are falling throughout Britain. At the country's largest calf market, Sturminster Newton, Dorset, they slumped on Monday, November 7th for the fourth week running.

SEASONALITY IN BEEF PRODUCTION

	W. Germany		France		Italy		U.K.		Ireland	
	1976	1974	1976	1974	1976	1974	1976	1974	1976	1974
1st Qtr.	25.3%	24.9%	25.0%	24.5%	22.8%	25.2%	27.2%	24.5%	24.2%	23.0%
2nd Qtr.	23.6%	23.5%	24.6%	23.9%	24.2%	25.0%	22.8%	22.8%	19.1%	18.5%
3rd Qtr.	25.0%	24.9%	25.8%	24.5%	27.9%	25.9%	24.5%	24.3%	26.4%	25.8%
4th Qtr.	26.1%	27.3%	24.4%	25.5%	25.1%	24.4%	25.6%	28.8%	30.4%	32.8%

The above chart, showing the seasonality of beef production, has been compiled from statistics issued on separate occasions, from the E.E.C. Commission in Brussels. It is very interesting to note that the trend in West Germany and France has been towards a more even flow of beef throughout the year. The Italians seem to be drifting towards producing more in the latter part of the year. The situation in Britain has evened out slightly and while there is a slight

A detailed four-market price analysis published by the Meat & Livestock Commission of the U.K., shows that, between the peak in August and last week, average Friesian bull calf prices fell by £8.73 a head, or 13%. The price for Hereford-Friesian crosses tumbled by £9.72, or 13.3% in the same period.

ITALIAN BEEF PRODUCTION

Beef production in Italy is expected to amount to 791,000 tonnes this year. This is 3% more than in 1976. A 1% decline is forecast for 1978, with a recovery again in 1979.

Production went from 663,000 tonnes in 1972 to 850,000 tonnes in 1974. The average over 1975/1976 was 758,000. The forecast for 1978 is 780,000 tonnes and the official Ministry of Agriculture projection for the following year is 800,000.

Italian beef consumption averaged 1.38 million tonnes between 1972 and 1976, and is expected to increase from an estimated 1.345 million this year, to 1.46 million tonnes in 1979.

The survey shows that Italy needs to import around 600,000 tonnes of beef in 1978 and 1979.

improvement in the Irish situation, we still seem to be producing a large quantity off the grass in the back end of the year. Nevertheless, when one sees over 30% of the beef produced annually, arriving on the market in the last three months of the year, prices have held well considering. When the statistics for 1977 are compiled, with present trends, it is doubtful if there will be any great change on 1976 figures.

SYMPATHY

Sympathy is extended to Mr. Patrick O'Shaughnessy of the Slaughter Hall on the recent death of his mother, Mrs. Mary O'Shaughnessy of Kilcoole, Rathkeale. Our deepest sympathy is also extended to Tom O'Shaughnessy and Patrick Costelloe, both of the Boning Hall - grandson and son-in-law respectively of the deceased. Condolences are also extended to other members of her family.

F.U.E. CHANGES

Mr John Harty, Regional Secretary for the Mid-West Region of the Federated Union of Employers', has recently left that organisation to take up a Senior post in private industry. Mr. Harty had close associations with Shannon Meat Ltd., during his time with F.U.E. We wish him every success in his new position. Mr. Niall Kelly has been appointed Regional Secretary to succeed Mr. Harty.

CHRISTMAS TRIMMINGS

By The Trimmer.

- * *There's a lot of warmth and friendliness in this simple little phrase :-
"A very Merry Christmas and a year of happy days".*
- * *May your Christmas Day be all aglow
With the joy that Season brings,
And be followed by a New Year
That's bright with all good things.*
- * *May the splendid joys of Christmas
Make your happiness increase
Then when Christmas Day is over
May your heart still glow with Peace.*
- * *The Holy Infant Jesus
Born this Christmas Night
Angels sing of the Glory
And Bethlehem's Star shines bright.*
- * *May many Christmas joys be yours,
With Christmas Peace that long endures
And Christmas love to light and bless
All the New Year with happiness.*
- * *The Spirit of Christmas is Peace.....
The Message of Christmas is Joy.....*
- * *Christmas - the magical time when,
For a moment Peace seems possible
After all.*

NEW FACES

Hereunder, is another close-up of four members of the Shannon Meat Staff, who have recently joined the Company.



Christy O'Dwyer.

Name : Timothy Christopher O'Dwyer
Address: Rooskagh East, Carrickerry.
Age : 18½ Yrs.
Marital Status : Single
Department : Slaughter Line.
Hobbies/Interests : Hunting and Fishing.
(Females and other wild assorted species).
Favourite Actor/Actress : Clint Eastwood.
Best Friend : David Larkin of the Boning Department.
Biggest Influence in Life : Females and my Mother's Wooden Spoon.
Life Ambition : To be rich and to work with the girls in the Casings Department.



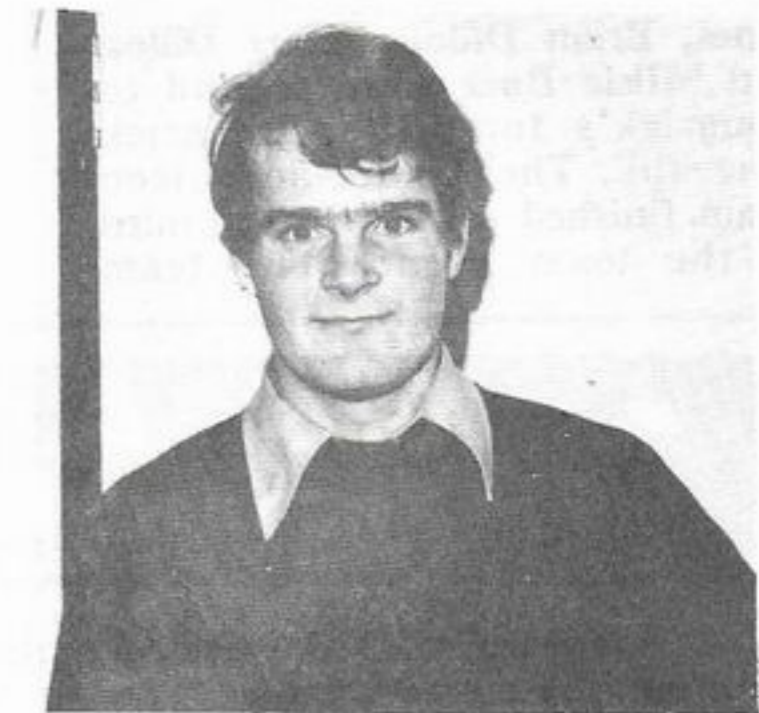
Maurice Curtin.

Name : Maurice Curtin
Address: Killeedy, Ballagh.
Age : 25 Yrs.
Marital Status : Single.
Department : Despatch.
Hobbies/Interests : Folk Music, all Sports.
Favourite Actor/Actress : Robert Redford and Barbara Streisand.
Best Friend : My Father.
Biggest Influence in Life : The late Woody Guthrie - (Folk Singer).
Life Ambition : To be Happy and Content.



Maureen Cronin.

Name : Maureen Cronin
Address : Lisavara, Kilfinny.
Age : 18 Yrs.
Marital Status : Single (Waiting for Mr. Right) !!
Favourite Actor/Actress : Robert Redford.
Best Friend : My Teddy-Bear.
Biggest Influence in Life : The man that gave me this job.
Life Ambition : To be happy with Mr. Right and my Teddy-Bear.



Tom Toomey.

Name : Thomas Toomey
Address : Curragh-Beg, Adare.
Age : 18 Yrs.
Marital Status : Single.
Department : Despatch.
Hobbies/Interests : Reading And Football.
Favourite Actor/Actress : Paul Newman.
Best Friend : John Fitzgerald, Adare.
Biggest Influence in Life : Tom Pearse's (School-Teacher) Cane.
Life Ambition : To be Happy.

I.T.G.W.U. NEWS

The Irish Transport and General Workers' Union is at present conducting an Industrial Relations Course for Shop Stewards in the Limerick region. The duration of the course is over a ten day period and takes place one day per week at the Glentworth Hotel, Limerick. It is being attended by the Shannon Meat Section Chairman, Mr. P. J. Jones. Sixteen shop stewards from eight companies are attending. Areas covered in the course are labour law and economics. These include the functioning of the Labour Court, Department of Social Welfare, Redundancies, recent Labour Law, etc. On the economics area, the following items are covered:- Accounts, Balance Sheets, implications of Profit & Loss for firms, Productivity, E.E.C., etc. Also covered are how to conduct union business, chair union meetings and how to co-ordinate the functioning of the shop stewards. Negotiating procedures and the promoting of good and honest relationships between management and workers are covered extensively.

We would like to express the Union's sympathy with our former Chairman, Mr. Patrick O'Shaughnessy, on the recent death of his Mother. We extend this also to the other members of the O'Shaughnessy family.

GOOD WISHES

We wish Richard Sheehy and John Reddin, both members of our Union who were recently married, a long and happy life. We wish Mr. John Harty of the F.U.E., well in his new job. In negotiating across the table from us, we always found him to be very fair and reasonable and much progress was made in industrial relationships during his period in the F.U.E.

WORKERS CUT UP

A recent item in our Journal "Liberty", may be of interest to our readers. It states: "We see an item in the Industrial Worker Journal of the Industrial Workers of the World, that conditions at the Pittsburg Pepsi-Cola Bottling Plant are so bad - an average of 10% of the workers being injured at any given time - that a rank and file union caucus in the plant has nominated management for membership of the Meatcutter's Union".

ATHLETIC CLUB

Another Sports Club has been formed in the Rathkeale community. The Athletic Club is the second such recreational sport to be reincarnated this year, the Boxing Club being the other. Between 1957 and 1961, a very strong and successful Club existed. Some of the runners who represented Rathkeale Athletic Club during those years were:- **Michael McNamara, Pat Costelloe, Paddy Feane, Sidney Cliff, Michael Meehan, Connie Kenneally and Mike Dillon**, to mention but a few.

The inaugural meeting of the new Club took place on Wednesday, September 28th. The following Officers were elected:-

Chairman: Patrick McCann, Vice-Chairman: Mike Dillon, Secretary: Mike Hanley, Treasurer: Michael McNamara, Committee: Mike Walsh, Noel Harnett and Anthony Frawley.

FIRST OUTING

The Club had their first outing in the County Juvenile Cross-Country Championships held in the St. Munchin's College Grounds on 23rd October. The Under-Fifteen Team of:- **Pat McCarthy, Pat Jones, Brian Dillon, Barry Dillon and Mikie Barr** were second to Limerick's top Club, Limerick Emerald. The Under-Seventeen Team finished a very worthy third in the team event. The team

consisted of **Sean O'Sea, Brian Mooney, P. Harnett, Bobby Bradshaw and John Feane**. **James Feane** was the Club's sole representative in the Under-Thirteen event and he acquitted himself most satisfactorily. During the Winter months, the Club will be participating in the Cross-Country Challenges and then for the Summer months will be involved in the Track and Field scene. The manner in which the youths of the town have adopted themselves to rigorous training would seem to indicate every success for the future.



Michael McNamara, Treasurer of Rathkeale A.C.

SOCCER SCENE



The League campaign is now well under way and after a disastrous start, we are at last settling down to play some good football. We lost our first three games and in a twelve game League we might not be able to make up the lee way. Why the bad start? Obviously, we are missing Mike Gallagher's brilliance in goal and his steadying influence on the defence. Also, some of the lads are involved with the Gaelic, thus we have to do without them whenever there is a Gaelic game. This meant we started with a very unsettled side. Injuries to such players as Mario Zoncado and Timmy Mullane did not help matters either.

POOL TOURNAMENT

We are now running a Pool Tournament each Thursday night at Tom Grady's Half-Way House, in an effort to raise funds for the coming year. We would like to ask all you Pool Players for your support and we would also like to thank Tom for the use of his premises. The draw will take place each night at 9.00 p.m. Sharp.

MATCH REPORTS

Shannon Utd. : 0 Kilcolman : 3

This result was the best possible morale boost for Kilcolman to start their League Campaign. However, this was a dour struggle with Shannon Utd. always struggling to get on terms. Kilcolman took an early lead and were always in command and ran out easy winners by 3-0.

Kileany : 2 Shannon Utd. : 1

Another setback here for Shannon Utd. The game was very even in the first-half with both defences on top and half-time arrived scoreless. Johnny Jones opened our

account early in the second-half, but Kileany were soon on terms. It looked all over a draw, but in the final minutes, Kileany slashed our hopes of even one point with a fine winner.

Shannon Utd. : 1 Breska : 3

We bowed out of the F.A.I. Junior Cup at the first attempt. We had a very young side on duty, due to injuries to some of our first team players. These lads played well, but lacked the experience of a fine Breska side. Breska took the lead halfway through the second-half, but Brendan Culhane scored the equaliser. The sides were level after ninety minutes, but Breska added two more in extra time.

Shannon Utd. : 8 Kildimo : 2

United shook off their previous poor form and sank Kildimo without trace. The main feature of the game was the five goal bonanza by Johnny Jones, surely a record for Shannon Utd. John White scored two and Noel Harnett completed the scoring. Denis Harnett made his League debut in goals and had a fine match.

Shannon Utd. : 2 Castlemahon : 1

The result confirmed our improved form even though there was only the one goal dividing the teams at the finish. A corner on the right was headed to the net by Bill Chawke to give us an early lead and Johnny Jones (that man again) had us two in front by the interval. The second-half was very scrappy with Castlemahon trying hard to get back into the game and they scored a consolation goal near the end.

Goal Tally:- Jones: [7], White : [2], Culhane, Harnett and Chawke: one each.

Michael Dunne.

G. A. A. CLUB NEWS

By Michael O'Neill
Chairman.

The Inter-Firm G.A.A. Season has almost come to a close. The only outstanding competition is the County Hurling Semi-Finals and Final. As far as we here in Shannon Meat are concerned, the season is over. Once again it has been an unhappy conclusion for us. Our footballers were beaten in the County Semi-Final in Adare, on September 22nd. Southern Chemicals of Askeaton, once again proved themselves too strong for us. I would like to take this opportunity to congratulate them on winning the County Final.

COUNTY SEMI-FINAL

This game was by far the best of the whole League campaign. The football reached a very high standard at times throughout the hour. A better game was not seen in West Limerick this season. The atmosphere was really similar to what one might associate with a Final. Although we lost, we can be proud of our team.

FIRST HALF

Southern Chemicals went into an early lead of three points. Our lads were getting a fair share of possession, but, unfortunately, they were unable to convert the chances into scores. Midway through the first-half, John Jones levelled the scores from the penalty spot. Our forwards were combining better, but, unfortunately, not moving as fleetly as in earlier matches. Pat Nolan was having a great game for the opposition in the middle of the field. We conceded an easy goal which was scored from far out. Our goalie appeared to have saved the ball, but unfortunately, he had crossed the line.

SECOND-HALF

Stephen Murphy started the Second-Half at right half-back and

played very well. Sothern Chemicals scored first again in this half. Our lads were getting on top. Turlough McDonald stormed through for a great goal and the sides were level. One could almost sense victory. Both sides exchanged points in the next ten minutes. Unfortunately, Southern Chemicals were much fitter than we were and eventually won by four points. The score was Shannon Meat: 2-5, Southern Chemicals: 1-12.

Best for Shannon Meat were:- Turlough McDonald, Sean Harnett, John Jones, William Chawke, Jim Kenrick and Stephen Murphy.

The stars for Southern Chemicals were:- Tom Greaney, Paddy McMahon and Pat Nolan.

Scores for Shannon Meat were:- **Turlough McDonald: 1-1, John Jones: 1-1, Sean Harnett: 0-2 and Ml. Gallagher: 0-1.**

TEAM:- Tom White, Jim Kenrick, Padge Markham, Liam Woulfe, Niallie Hogan, Denis Duggan, Denis Kenneally, John Lynch, James O'Grady, Sean Harnett, Turlough McDonald, Noel Harnett, Stephen Murphy, John Jones and Michael Gallagher.

SUBS:- Wm. Chawke, Maurice Barry, Maurice Sheehan, Ted Curtin, Tom Shiels and Jack Daly.

SYMPATHY

On behalf of all Members of the Club, I would like to sympathise with Paddy Shaughnessy and the other members of his family on the recent death of his mother.

May she rest in peace.

Published By :-
SHANNON MEAT LTD,
Rathkeale
And Printed By :-
ORIEL PRESS LTD,
CHARLEVILLE

ABBAY PITCH & PUTT

The second playing Season of the Abbey Pitch & Putt Club is now near completion. As is fashionable at this time of year, I shall reminisce on the activities of the Club over the past year.

January - The first Annual General Meeting of the Club took place on January 11th. Officers elected were: Chairman: Seamus Tierney, Secretary: Sean Harnett, Assistant Secretary: Liam Woulfe, Joint Treasurers: Miko Dunne and Anthony Woulfe.

February - This month saw the departure of the Club's leading player. Donald Costelloe left the region upon taking up a position with a meat firm in the Midlands.

March - The Course re-opened on the 12th of March.

April - In the early part of this month, Tom Steele was co-opted onto the Committee.

May - The Club's first ever Open Tournament resulted in triumphs for some Club Members. Liam Woulfe captured the much sought after, Joe Cuddy Perpetual Trophy (Overall Nett), Seamus Tierney, Anthony Woulfe and Breed Woulfe were the other locals to carry home laurels.

June/July/August - Jimmy Dollery won the Junior Nett in the Croom Open. Liam Woulfe captured the

Junior Gross in the same tournament. Mrs. Chrissie Dollery was successful in the Parteen Open.

September/October/November September 21st was the starting date for the Club's first 41 Drive held in the Half-Way House, Main Street, Rathkeale. I am glad to relate that this venture, after a slow start, is proving to be a success.

To many, the aforementioned achievements and happenings may be ranked as non-events. However, to a Club still in the 'Infancy Stages', these are feats of great satisfaction. Perhaps this time next year, our success story will require further coverage.

A happy Christmas is extended to all our Club Members, many of whom, I presume, will be practising their putting on the carpet, after their fill of turkey, ham and pudding.

AnCO REPORT

In their report for the year 1976, AnCO - The Industrial Training Authority include the following information:-

10,727 people were trained by AnCO - a 42% increase on 1975.

In the seven designated areas, there are 10,746 companies which employ 293,114 persons.

SHANNON MEAT GAZETTE



SHANNON MEAT LTD.

Telephone : Rathkeale 49

Top Prices Paid for :-

Prime Steers, Heifers,
Cows and Bulls.

All Stock must be advised.



SHANNON MEAT LTD.

Telex : 6932.

Processors of :-

Quality Beef Products
Home Freezer Cutting
a Speciality.

CALENDAR 1978

JANUARY

SUN	MON	TUES	WED	THUR	FRI	SAT
1	2	3	4	5	6	7
8	9	10	11	12	13	14
15	16	17	18	19	20	21
22	23	24	25	26	27	28
29	30	31	<small>Last Quarter 2nd/31st New Moon 9th First Quarter 16th Full Moon 24th Bank Holidays: 2nd Great Britain & Ireland 3rd Scotland Epiphany 6th</small>			

FEBRUARY

SUN	MON	TUES	WED	THUR	FRI	SAT
+	+	+	1	2	3	4
5	6	7	8	9	10	11
12	13	14	15	16	17	18
19	20	21	22	23	24	25
26	27	28	<small>New Moon 7th Full Moon 23rd First Quarter 14th Ash Wednesday 8th</small>			

MARCH

SUN	MON	TUES	WED	THUR	FRI	SAT
<small>Last Quarter 2nd/31st New Moon 9th First Quarter 16th Full Moon 24th Bank Hols. 17th Ireland 27th England Wales & Ireland 24th Scotland</small>			1	2	3	4
5	6	7	8	9	10	11
12	13	14	15	16	17	18
19	20	21	22	23	24	25
26	27	28	29	30	31	+

APRIL

MAY

JUNE

SUN	MON	TUES	WED	THUR	FRI	SAT
1	2	3	4	5	6	7
8	9	10	11	12	13	14
15	16	17	18	19	20	21
22	23	24	25	26	27	28
29	30	31	Last Quarter 2nd/31st New Moon 9th First Quarter 16th Full Moon 24th Bank Holidays. 2nd Great Britain & Ireland 3rd Scotland Epiphany 6th			

APRIL

SUN	MON	TUES	WED	THUR	FRI	SAT
+	+	+	1	2	3	4
5	6	7	8	9	10	11
12	13	14	15	16	17	18
19	20	21	22	23	24	25
26	27	28	New Moon 7th Full Moon 23rd First Quarter 14th Ash Wednesday 8th			

MAY

SUN	MON	TUES	WED	THUR	FRI	SAT
Last Quarter 2nd/31st New Moon 9th First Quarter 16th Full Moon 24th Bank Hols. 17th Ireland 27th England Wales & Ireland 24th Scotland						
1	2	3	4	5	6	7
8	9	10	11	12	13	14
15	16	17	18	19	20	21
22	23	24	25	26	27	28
29	30	31	+			

JUNE

SUN	MON	TUES	WED	THUR	FRI	SAT
+	+	New Moon 7th Full Moon 23rd		First Quarter 15th Last Quarter 29th	+	1
2	3	4	5	6	7	8
9	10	11	12	13	14	15
16	17	18	19	20	21	22
23	24	25	26	27	28	29
30						

JULY

SUN	MON	TUES	WED	THUR	FRI	SAT
+	1	2	3	4	5	6
7	8	9	10	11	12	13
14	15	16	17	18	19	20
21	22	23	24	25	26	27
28	29	30	31	New Moon 7th Full Moon 22nd First Quarter 15th Last Quarter 29th Bank Holiday 1st Scotland		

AUGUST

SUN	MON	TUES	WED	THUR	FRI	SAT
New Moon 5th Full Moon 20th First Quarter 13th Last Quarter 27th Bank Holiday 5th England, Wales & Ireland						
1	2	3	4	5	6	7
8	9	10	11	12	13	14
15	16	17	18	19	20	21
22	23	24	25	26	27	28
29	30	+				

SEPTEMBER

SUN	MON	TUES	WED	THUR	FRI	SAT
+	+	New Moon 5th Full Moon 20th		First Quarter 13th Last Quarter 26th	+	1
2	3	4	5	6	7	8
9	10	11	12	13	14	15
16	17	18	19	20	21	22
23	24	25	26	27	28	29
30	31					

OCTOBER

SUN	MON	TUES	WED	THUR	FRI	SAT
New Moon 4th Full Moon 19th First Quarter 11th Last Quarter 25th Bank Holidays 7th Scot/Ireland						
1	2	3	4	5	6	7
8	9	10	11	12	13	14
15	16	17	18	19	20	21
22	23	24	25	26	27	28
29	30	31	Full Moon 18th Last Quarter 25th Bank Holiday 28th England/Wales			

NOVEMBER

SUN	MON	TUES	WED	THUR	FRI	SAT
+	+	New Moon 2nd Full Moon 16th		First Quarter 10th Last Quarter 24th	1	2
3	4	5	6	7	8	9
10	11	12	13	14	15	16
17	18	19	20	21	22	23
24	25	26	27	28	29	30

DECEMBER

SUN	MON	TUES	WED	THUR	FRI	SAT
1	2	3	4	5	6	7
8	9	10	11	12	13	14
15	16	17	18	19	20	21
22	23	24	25	26	27	28
29	30	31	New Moon 2nd/31st Full Moon 16th First Quarter 9th Last Quarter 24th			

SUN	MON	TUES	WED	THUR	FRI	SAT
First Quarter 7th Full Moon 14th Last Quarter 22nd New Moon 30th						
1	2	3	4	5	6	7
8	9	10	11	12	13	14
15	16	17	18	19	20	21
22	23	24	25	26	27	28
29	30	+	+			

SUN	MON	TUES	WED	THUR	FRI	SAT
+	First Quarter 7th Full Moon 14th Last Quarter 22nd New Moon 29th		Christmas Day 25th Bank Holidays 25th Scotland 26th England, Wales & Ireland		1	2
3	4	5	6	7	8	9
10	11	12	13	14	15	16
17	18	19	20	21	22	23
24	25	26	27	28	29	30
31						