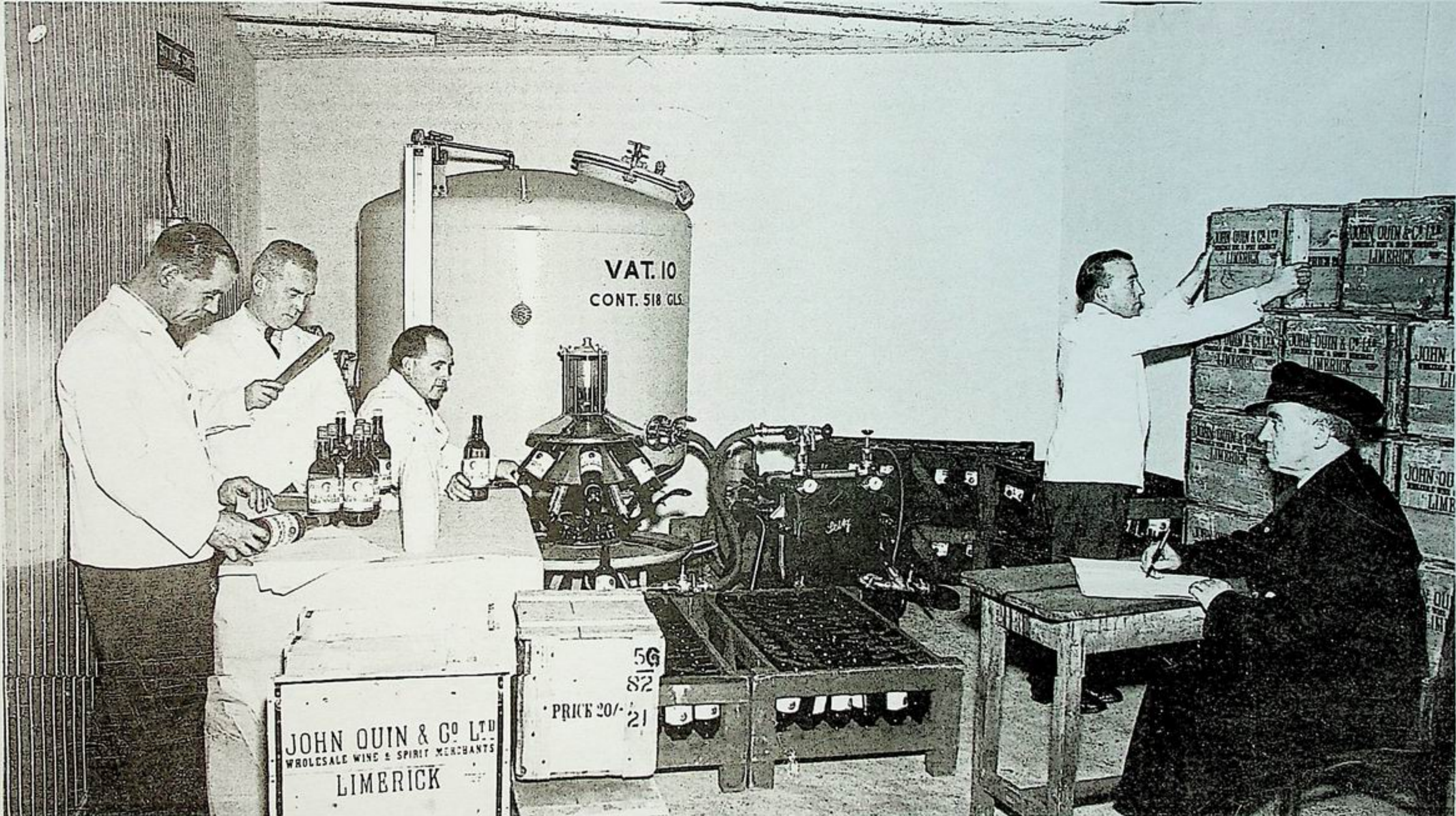


Checking out the sweet counter at John Glynn's grocery shop on Mulgrave Street in July 1975 which looks exceptionally well stocked, as you might expect in the pre-supermarket era. Above right, the man himself



Staff at John Quin & Co Ltd, Tea, Wholesale Wine & Spirit Merchants, Ellen Street, 1956, wrapping up bottles