

Visit Our Modern  
**NEW PREMISES**  
 NOW! One of the  
 foremost shoe repair  
 establishments in ...  
**IRELAND —**

# WALLACE'S

2 & 3 HENRY STREET, LIMERICK

Phone 45356

★  
**WALLACE'S  
 NEW PREMISES**

Installation of Up-to-date  
 Plant of Modern Machinery  
 (FIRST OF ITS KIND IN IRELAND)

by

**M. J. BOYLAN  
 & SONS, LTD.**

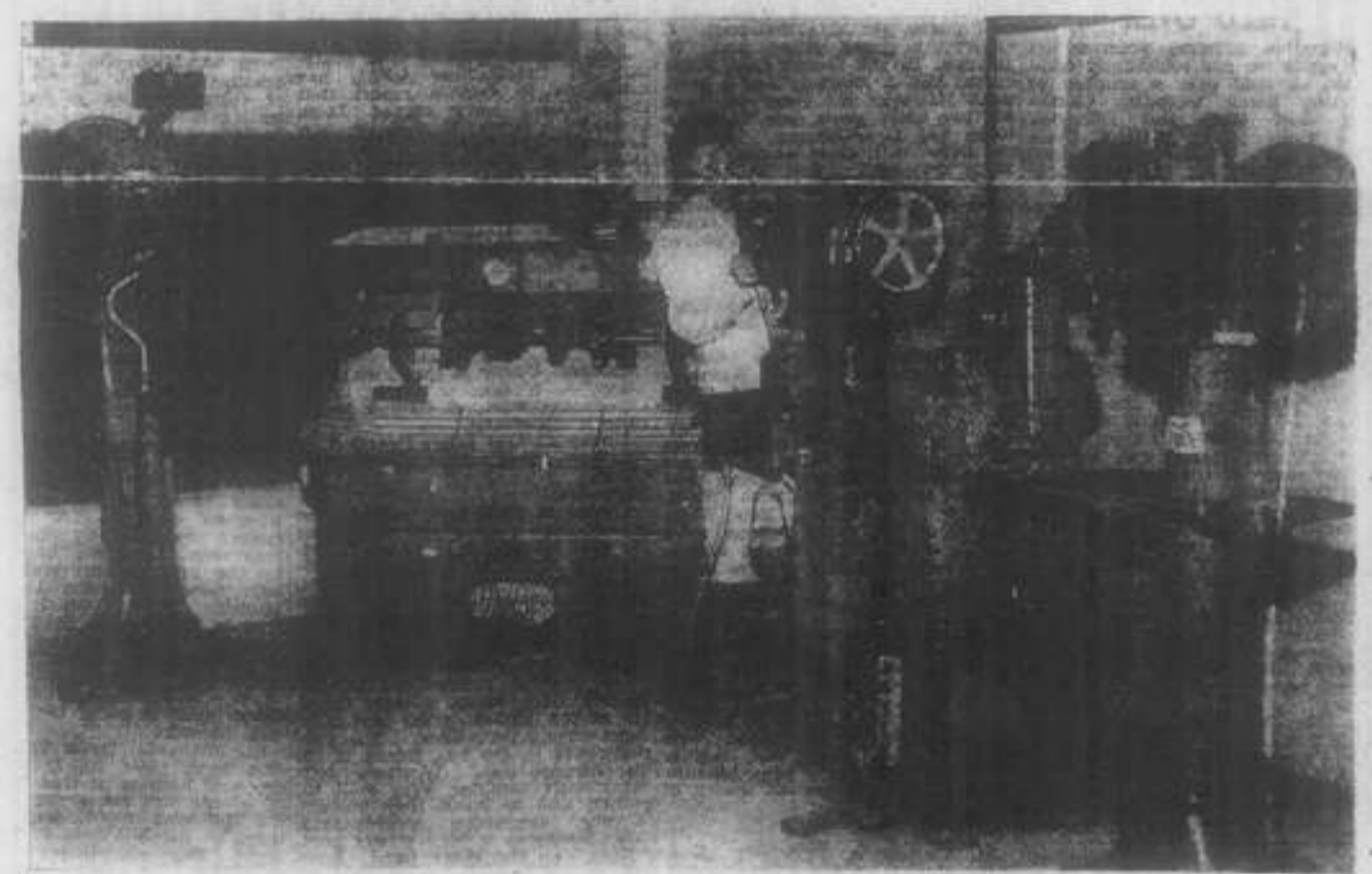
SPECIALISTS IN ALL  
 CLASSES OF MACHINERY,  
 EQUIPMENT and SUPPLIES  
 FOR THE BOOT REPAIRING  
 AND MANUFACTURING  
 TRADE

★ **Qualified Mechanics**  
**FOR AFTER SALES SERVICE**

LARGE STOCKS OF SPARE PARTS  
 FOR ALL MACHINES

Wholesale Distributors  
 for all classes of TRAVEL  
 GOODS and Fancy Goods

★ Write for full details  
**48 Lr. Camden St.**  
 PHONE: 55491-2-3



A glimpse at some of the vast array of latest equipment at Wallace's of Henry Street, Limerick. At the stitcher is Mr. H. Closs, Service Mechanic, of Messrs. M. J. Boylan & Sons Ltd., Dublin.

*CITIZENS will have noticed the alterations which are now taking place in 2-3, Henry Street, the well-known Limerick Shoe Repair Factory of Messrs. Wallaces. These alterations and extensions, now nearing completion, mark another milestone in the record of progress of one of Limerick's oldest firms.*

The new frontage is both impressive and pleasing to the eye, while the interior layout is of a very high standard. The factory itself is designed on the most modern lines and is calculated to provide increased output and a speedier service. Included in the factory are machines for cutting, stitching, trimming, finishing and for attaching those dainty heels to ladies' shoes.

**LONG TRADITION**

Wallace's have been established for over 100 years and the high quality of their work reflects the large amount of experience which has been gained in that time. The business has always been a family concern and Mr. Michael Wallace, who retired a few years ago, always kept abreast of the latest developments in shoe repairing and introduced some ideas of his own, which proved highly successful. It is gratifying to see that his son, William, to whom he handed over the business on his retirement, is following in his footsteps, as is shown by the initiative which he has displayed both by the improvements which are now being carried out and by the installation of some of the latest machinery which have been for him by the well-known Dublin firm of Messrs. M. J. Boylan and Sons, Ltd.

Some of the staff have been with the firm for over 30 years. The two members with the longest service are Mr. Ted O'Donovan and Mr. John Fahy. Under the new organisation, Mr. Fahy will take up a new appointment as foreman.

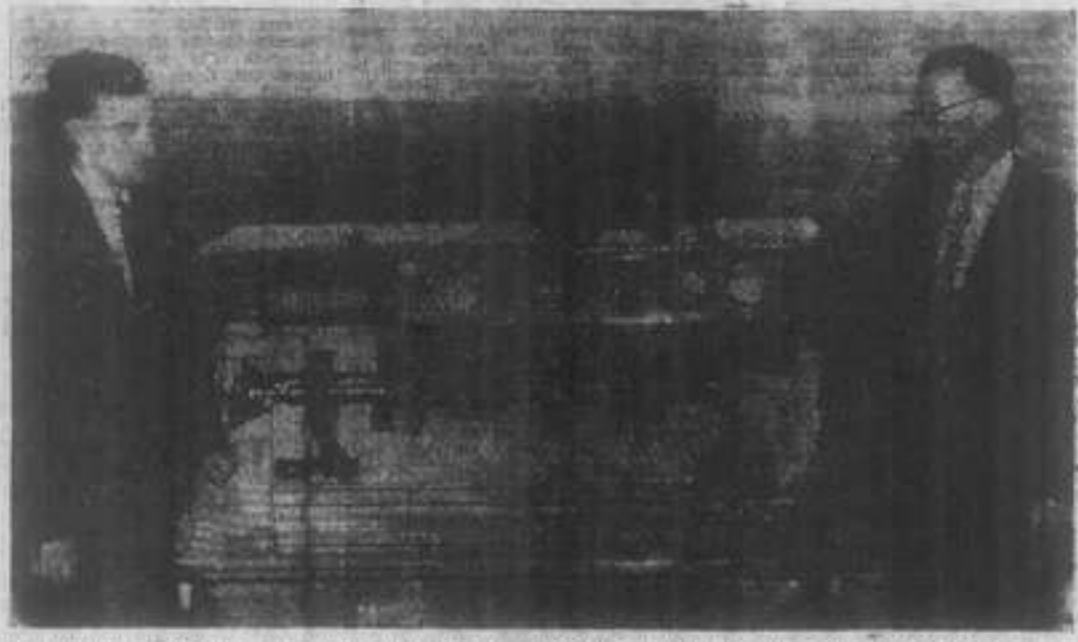
With the new extensions and re-organisation taking place at Wal-

lace's footwear repairing will be as nearly automatic as is possible. However, repair work will still be carried out by hand, if requested to do so by the customer.

Where so many repair items are handled each week, it is obviously necessary to maintain a rigid check. To ensure that this is done, repairs are ticketed when received and a description of the

repairs work required is noted on the ticket—thus, the repairs are broken down into their various categories. The introduction of a new conveyor belt system will speed up the dispatch of work to the fitting-room, where the shoes are individually examined and the most suitable materials selected from the large stocks of popular

(Continued on Page 18)



Mr. William Wallace is seen here with the latest high-speed trimming machine—the only one of its type in Ireland. Mr. E. Mooney—general manager of Messrs. M. J. Boylan & Sons Ltd., Dublin, suppliers of the machine.

The Proof  
 Is In Their Progress

★ IT PAYS TO USE  
**BETTASOLE**

★  
**BALLYBAY TANNERS  
 LIMITED**

Heartily Congratulate

**WALLACE'S**  
**LIMERICK**  
 users of  
**BETTASOLE**

the Long Wearing Sole Leather  
 on the

**OPENING OF THEIR  
 NEW PREMISES IN  
 HENRY STREET, LIMERICK**

BALLYBAY TANNERS, LIMITED  
 BALLYBAY - CO. MONAGHAN

WISHING THE ENTERPRISING FIRM OF  
**WALLACE'S**  
 CONTINUED SUCCESS.  
**CHRISTY HARDIMAN**  
 BUILDING CONTRACTOR,  
 "TNIS CEALTRA," CORBALLY ROAD,  
**LIMERICK**