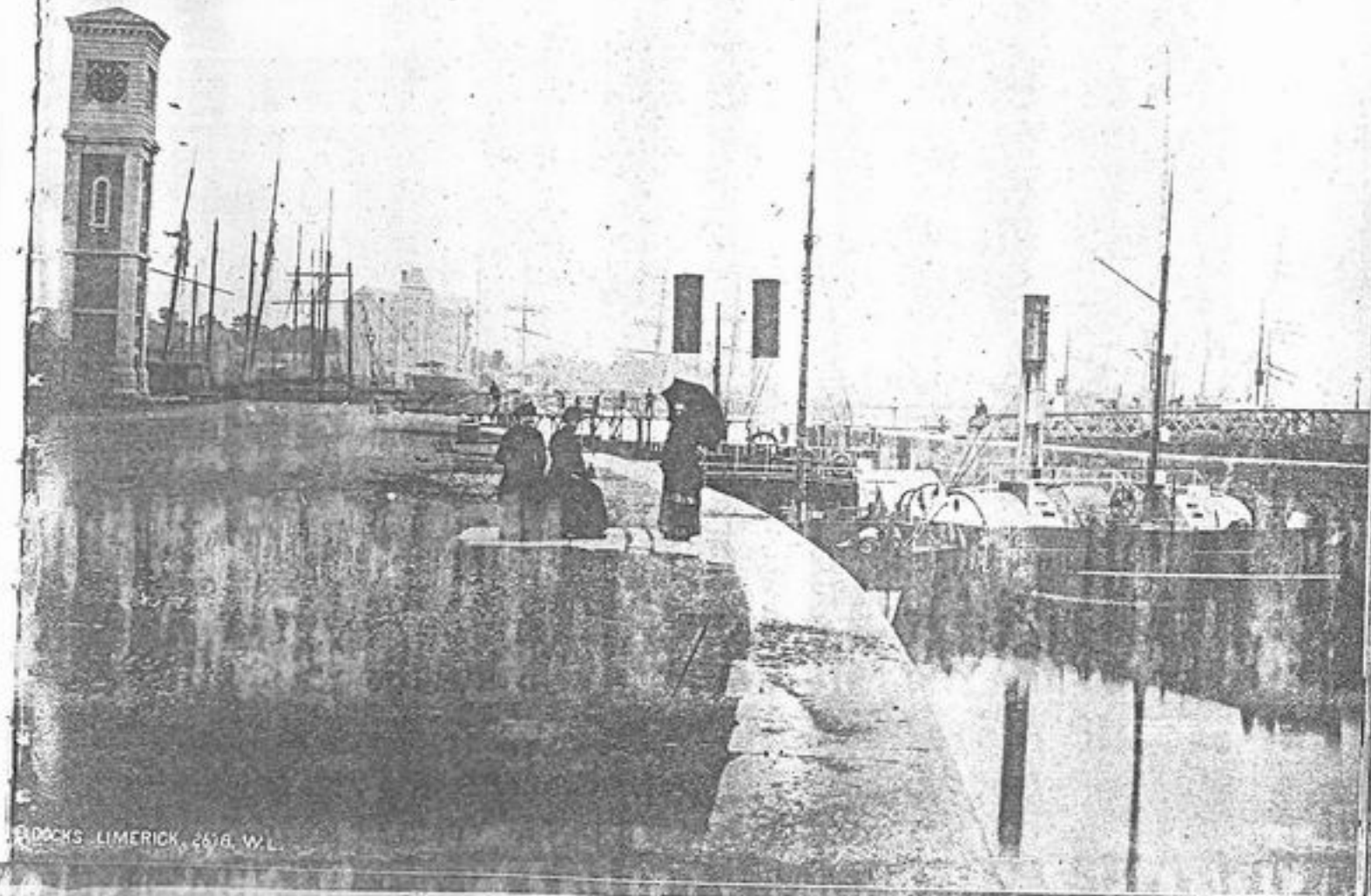


SHANNON NAVIGATION TERMINAL IN LIMERICK

The barges from here went as far as Lough Allen. Lock Mills can be seen on the extreme left. The derelict building (left background) was a brewery. The headquarters of the Limerick Sand Co. was also here. The sandcots can be seen unloading their sand which was dredged at Plassey. The cots were then towed by manpower from the head of the canal, and their contents sold for two shillings a horse-load delivered. All C.I.E. traffic ceased on 31st December, 1959. Guinness operated here till 1960. The last barge for Limerick - 51 M - left St. James' Harbour, Dublin in 1960. Passenger boats to Dublin operated from here in the early 19th century. All these buildings are now derelict and the lock gates in disrepair.

The "Bard of Thomond" started his apprenticeship at Lock Mills.



DOCKS LIMERICK, 26/6, W.L.