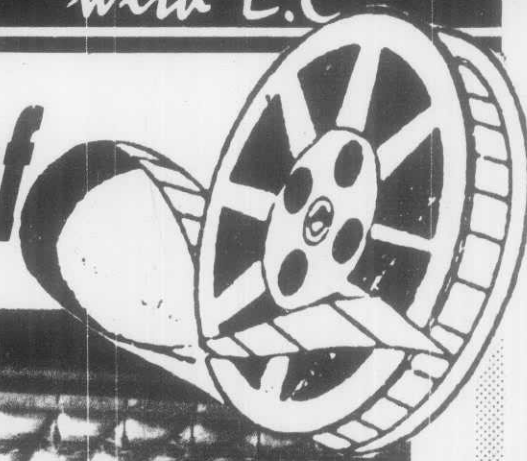


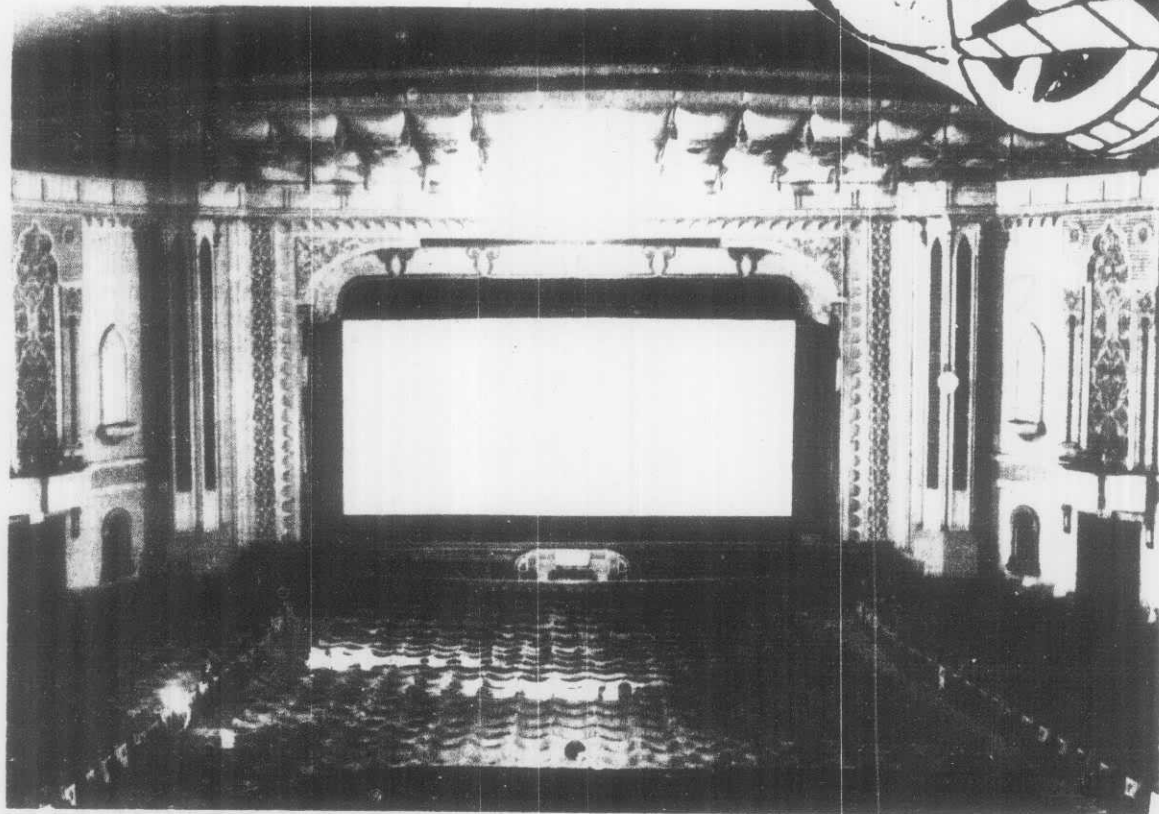
*That's Entertainment*

*with E.C*

# *The Savoy . . . a treasurehouse of memories*



● An artist's impression of the facade of the Limerick Savoy in 1935.



● This picture of the interior of the Savoy in Limerick was taken in 1956 for an advertising feature spotlighting its 21st Birthday. It shows the huge CinemaScope screen (installed in 1953) and the Moorish architecture of the house which made it one of the best proportioned cinemas in Ireland. The manager during the middle '50s, was Mr. Tom English, who is now a successful member of the car trade.