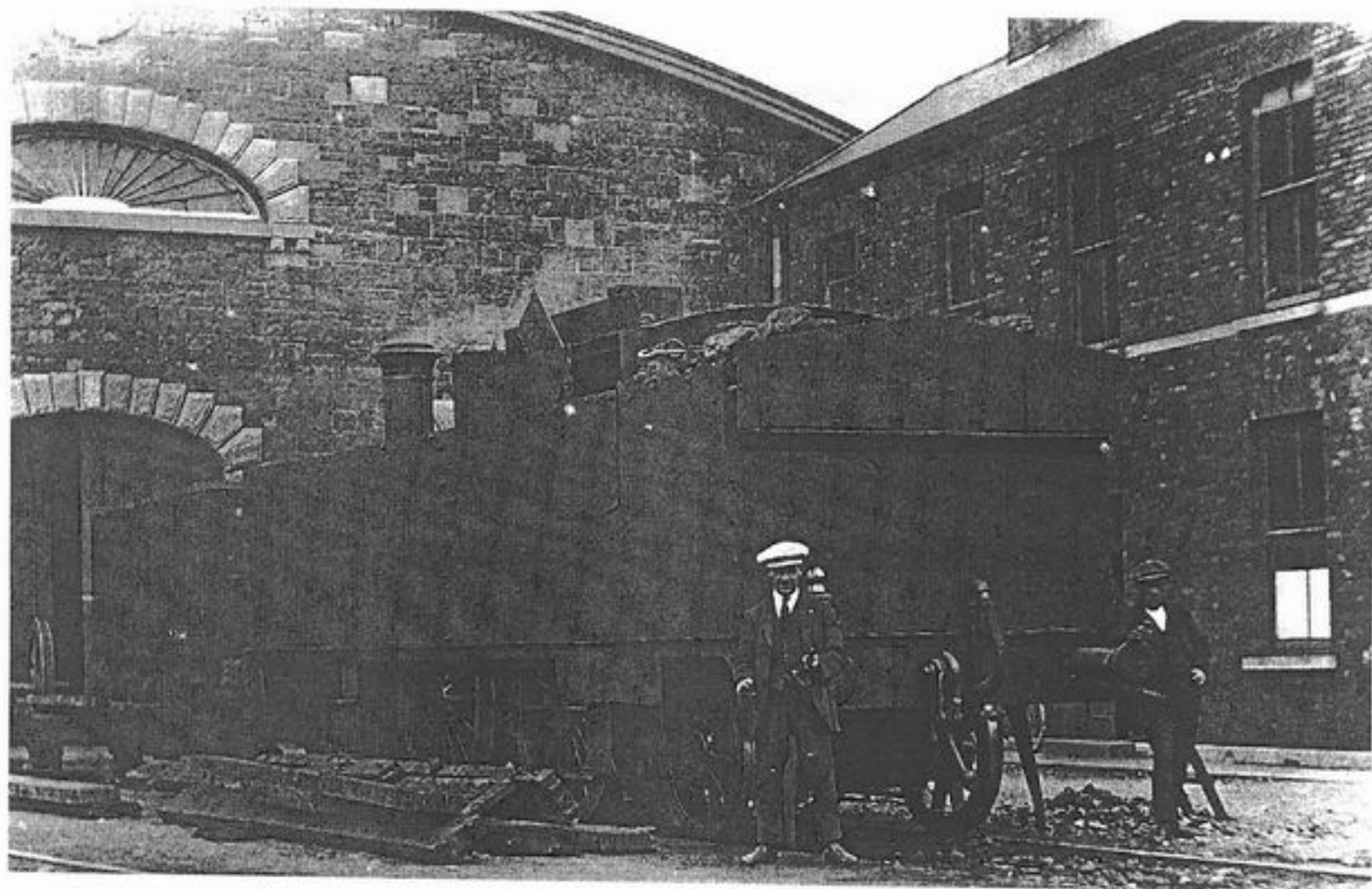


Limerick Pictures



104 As the anti-Treaty troops retreated from the city, the pro-Treaty forces gradually took over. Prisoners were rounded up in the county and brought to Limerick in closed wagons and armoured trains. They were taken from the railway station and the Limerick Locomotive Works to the nearby prison, some few hundred yards away. As the Free State soldiers gained further control over the countryside, more prisoners were crowded into lorries and brought to the city. This armoured train was photographed at the Limerick Railway Station in July 1922 by a local amateur photographer, F. W. Mitchell, whose series

of pictures of this disturbed period in Limerick and Irish history has provided a most valuable local archive.