

# 10. Style Guru Celebrates

**S**TYLE guru for the Mid-West, Celia Holman Lee celebrates 22 years in the fashion business this year and is still touring tirelessly 'round the region with her troupe of 30 Limerick based models and stylists.

Having just survived a hectic October which brought show after show, she's relaxing before the still-more-hectic Christmas season comes to steal away her small ration of free time.

Celia styled the Mid West Designer of the Year Awards at The Limerick Inn in Mid October, an event which drew 800 of Limerick's fashion doyennes to watch Ballycassidy-based knitwear designer Lucy Erridge scoop the top prize. On Monday last she filled the ramp for the annual Helene Modes show at the Dunraven Arms, held to aid The Limerick Youth Centre. Attending the lunchtime show were Helene Modes owner Helma Lynham, Susan Cusack of Limerick's Bennetton shop, Aine O'Connor of Bunratty Cottages and Helen O'Donnell the stylish wife of



**ULYSSES**

with Marion Cullen

TD Tom O'Donnell.

Celia, herself a former top model, insists that the ladies of the Mid-West are amongst the most style conscious in the country. "Louise Kennedy's designs are popular around Limerick, as are designs from Mondri, Steilman and Frank Usher," says Celia, "while local designers like Lucy Erridge and Allie Kay, who produces a top class range of ethnic weaves and tweeds in County Clare, are enthusiastically supported".

As for the Mid Wests fashion flagwavers, the ladies with style in the Limerick region, well there's Liz Ryan of the Limerick Post, there's Josephine Prendergast, Pam McCarty of the 'Loretta

Bloom' Company, and there's Patricia Casey and Emer McNamara of the Belltable...in fact the list is as long as the Shannon itself.

Celia's biggest project to date will be a week long festival of fashion to be held in May 1991 which she will be organising as part of the Treaty 300 celebrations. "That will be a week of shows and clothing exhibitions, including a mix of local, national and international designs", she says, "and we're hoping that Paul Costelloe will come to open it for us, and he'll have to, won't he? After all, his grandfather was a Limerickman".



●Celia Holman Lee: Still tirelessly touring the region

# Riverrun By Brid And Gerry Dukes

**S**HANNONSIDE, Liffey-side - they've both been home to art dealer, socialite and restaurateur Brid Dukes, who has left her distinctive mark by both rivers running.

Brid's Riverrun Gallery and Restaurant on Honan's Quay acquired a Dublin twin last May, and now there's a 'Riverrun - Mark 2' on Dame Street in the capital.

Originally from Dublin, Brid swept south westward to Limerick in 1982 to take charge of the then newly opened Belltable Arts Centre on O'Connell Street. Belltable opening nights soon became Shannonside's most socially scintillating events, and together with husband Gerry, a college lecturer, a theatre critic, journalist and brother of politician Alan Dukes, Brid became a very popular figure on the Limerick social scene.

In 1986 Brid quit The Belltable to open The Riverrun in Limerick, and now she has sadly quit Limerick altogether to devote her substantial energies to the Dublin rivulet of her restaurant and gallery chain.

Brid's four children Orla, Daragh, Cliona and Osgar haven't been too upset by the move. 19 year old Orla is

studying History of Art and English at Trinity, and would have been leaving Limerick anyway. 11 year old Cliona has simply transferred her schooling from the Model School in Limerick to the sister Model School in Dublin, while 2 year old Osgar is too young to notice the radical change of scene. Only 17 year old Darragh has had to re-jig his life substantially - as lead guitarist with up-and-coming Limerick group 'They Do It With Mirrors' he still spends a lot of time gigging and rehearsing in his first home city.

Brid still travels to Limerick at least once every fortnight to oversee the Honan's Quay outlet which is now managed by Jackie Butler and Gillian Hayes, while husband Gerry is in Limerick four days per week to lecture at the Mary Immaculate College of Education on the South Circular Road. As The Riverrun in Dublin becomes more established Brid plans to divide her time more equally between the two cities, though, at the moment she is happy to be in the Capital where, she says "you don't have to travel 121 miles for an Arts Council meeting, and you can stroll home from an Abbey first night".



●Stobhain McInerney: began her

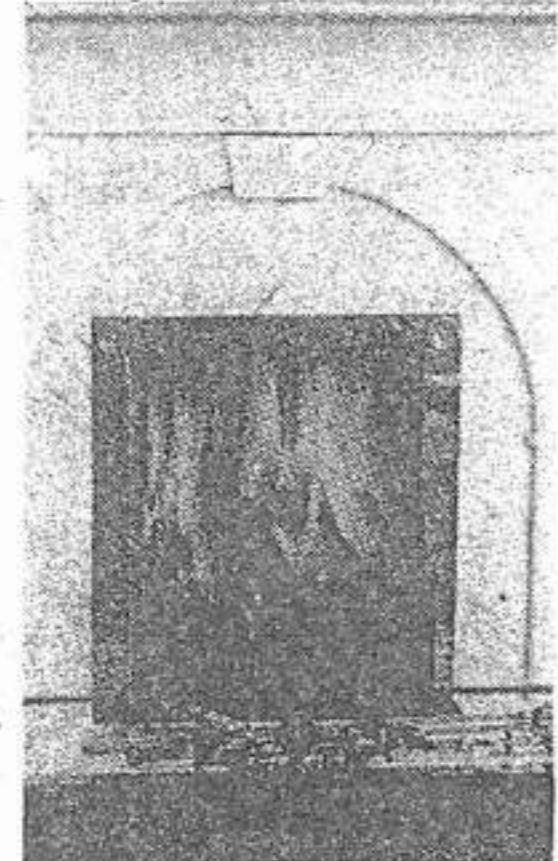
## SNIPS

**LIVELIEST** party in Limerick of late was a bye-bye party for Dan Lawless - son of 'round the world sailor Pat Lawless, who held a risqué fancy dress bash at the Ark Tavern in Corbally for almost 200 friends and colleagues. Dan is heading down-under and guests were encouraged to send him on his way dressed as slave traders and their victims (though by all accounts Dan has definitely NOT been "pressganged"). Jangling through the night was Limerick TD Jim Kemmy, solicitor Pat Punch, local artist Louise Walshe and Belltable MD Emer McNamara.

\*\*\*  
LIMERICK's quirkiest watering hole, 'The Whitehorse', just off O'Connell Street sadly served its last pint three weeks ago. What 'The Whitehorse' lacked in mod-cons it made up for in olde worlde atmosphere. Managed for decades by septarian brother and sister partnership Ita Fitzgibbon (relict of Limerick playwright John Fitzgibbon) and Eamonn Gleeson 'The Whitehorse has been

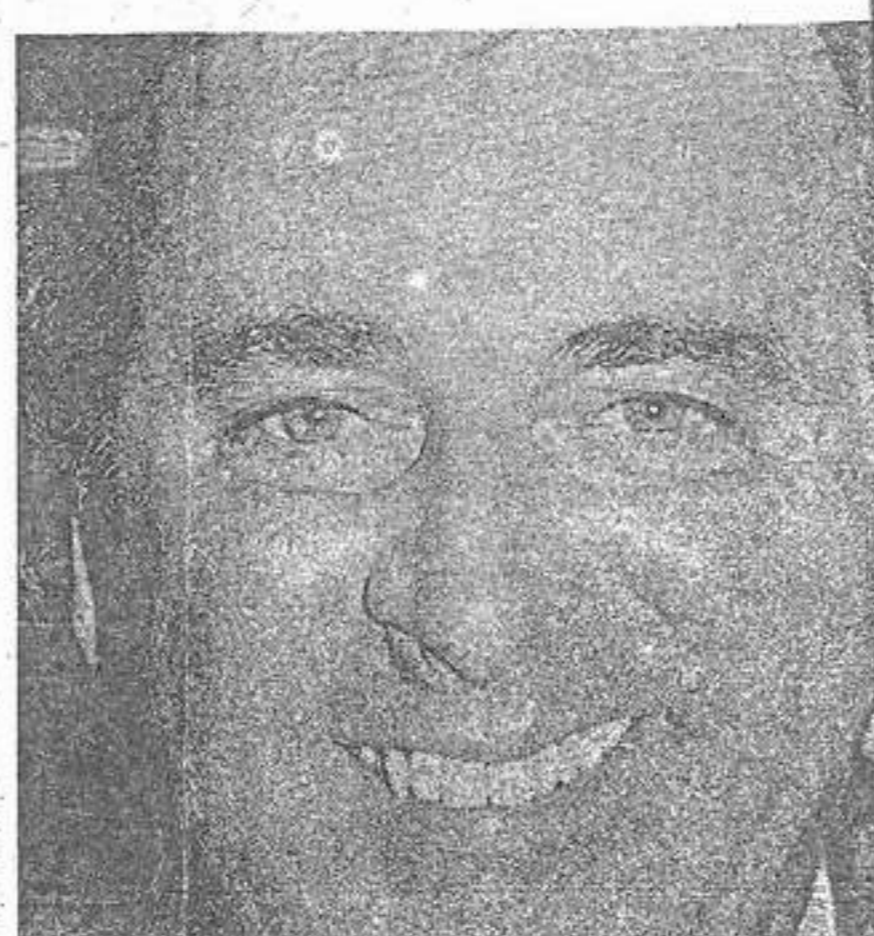
ABBEY HEATING & PLUMBING LTD. T/A  
**P. J. Matthews (Limerick)**  
Tipperary Road, Ballysimon,  
Co. Limerick.  
Tel: (061) 43722 Fax: (061) 43308

**FIRE**  
The fire everyone is talking about  
THE PUSH BUTTON  
**GRATEGLOW**  
From **£199.00**



## Preparing Welcomes For The Modern Wild Geese

**A** MEMORIAL to history's Wild Geese is being planned by Limerick's latter day Wild Geese as a highlight of the Treaty 300 celebrations in '91. Already exiled Shannonsiders scaf-



**CHAMBER OF COMMERCE LIMERICK**  
Serving the interests of industry, trade, commerce, tourism and the professional services in Limerick and Shannon.  
Providing services on certificates of origin, export documentation,