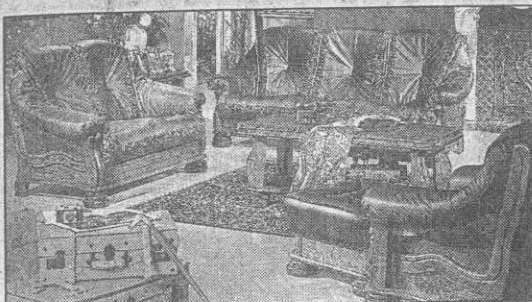


CLEARANCE SALE

New Consignment Arriving



Wholesale prices to the public



100's MORE BARGAINS

DROMKEEN FURNITURE

DROMKEEN CO. LIMERICK

Half-way Tipperary-Limerick

OPEN . . .

MONDAY - SATURDAY — 11 - 5.15

SUNDAY — 1 - 5.15

CLOSED WEDNESDAYS

HURRY - HURRY

EVERYTHING ROCK BOTTOM PRICES

ARDAGH PILGRIMAGE FATIMA

26th September - 3rd October, 2000

EX SHANNON AIRPORT
Full Board

PREMIER TRAVEL

2 Grand Parade, Daunt's Square, Cork
Tel. 021-277700 (t24/81750)

Le Chelle Restaurant

Doon, Co. Limerick

061 - 380077

NOW OPEN FOR SUNDAY LUNCH

'Ashes' display will allow visitors slum it

By DEARBHLA LOOBY

LIMERICK past to present—through the ages in Limerick city, rain and all as depicted in Angela's Ashes.

Popular places, streets and houses as they change from slums to a roaring city of the Celtic Tiger.

This is Limerick, not perhaps, as the young Frank McCourt saw it, put as anyone who knows Limerick now acknowledges.

And those who have put together the exhibition in the coach-house of Limerick's Georgian House, Rising from the Ashes, have hit the nail in the head in placing the Ashes story in the context of how Limerick has developed through the years.

The idea for the exhibition came from Shannon Development and its tourism subsidiary, Shannon Heritage, as a way of building on the success of the Angela's Ashes book.

The new Ashes Centre will provide visitors with an opportunity to put what they have read in McCourt's book in the context of Limerick city.

Shannon Development and Limerick Civic Trust have erected a recreation of the young McCourt's home, the small leaking kitchen and the upstairs bedroom in which the family slept, in an £80,000 tourism development. The setting for the exhibition is the stables of 2, Pery Square, the renovated home of a wealthy Georgian family.

The exhibition is divided into three main areas. The Making of Ashes using photographs it follows the process of filming Angela's Ashes in Limerick city. On the Trail of the Ashes, a life-size reconstruction of the McCourt home and images of Limerick as the McCourt's saw it, and Memoir of Limerick Rising from the Ashes, showing evocative pictures of Limerick as it was then, and is now.

The centre also houses a retail area where books and images of Limerick



Angela's memorial: two of the stars of the film, Angela's Ashes, Peter Halpin, Mungret, left, and David Marsden, are all dressed up for the opening of the Ashes Exhibition at 2, Pery Square (LL)

WORRIED THE CAR

THE DAEWOO CAR CHEQUE

Pay: Owner of car registered before Jan. '92
Amount: One thousand two hundred pounds
against a Year 2000 Daewoo Matiz or Lanos.
Signed: Daewoo Dealer
1850 323 966

HAVE A CHEQUE INSTEAD

This cheque guarantees you a trade-in allowance of £1,200 for a car registered before January 1992 against a year 2000 Daewoo Matiz or Daewoo Lanos.



MATIZ SE

RRP £9,180

Less Car Cheque £1,200

£7,980



LANOS 3 Dr. S

RRP £10,480

Less Car Cheque £1,200

£9,280

**£1,200 off a new car.
That'll be the Daewoo
Car Cheque.**



DAEWOO

That'll be the Daewoo

Prices include delivery & related charges. Terms & conditions apply.
Offer available for a limited period only.

www.daewoo.ie

Sales information service: 1850 323 966

Noonan's Garage

GALBALLY



Following the recent transfer of business, we wish to offer sincere apologies to our many valued customers for any inconvenience which this may have caused.

**WE CAN STILL BE
CONTACTED AT**

Doon, Co. Limerick
061 - 380077
NOW OPEN FOR SUNDAY LUNCH
12 - 3.30pm

LIMERICK LEADER
FAX NUMBERS ARE:
ADMINISTRATION: 314804
EDITORIAL: 401424
ADVERTISING: 401422

**LOW FARES HAVE
ARRIVED IN SHANNON!**

LONDON

STANSTED - NOW 3 TIMES DAILY

FROM

7

£

RETURN

CALL US NOW!



061 470066

Also
FRANKFURT
(NAH)
Flights Daily

RYANAIR.COM
THE LOW FARES WEBSITE

Restricted travel times, terms & conditions apply. Govt. tax, airport and passenger service charges are excluded from fare. £3 credit card charges when booked directly with Ryanair. Fares apply to mid-week travel only. Flights subject to availability. Flights operate from Shannon Airport.

ing from the Ashes, showing evocative pictures of Limerick as it was then, and is now.
The centre also houses a retail area where books and images of Limerick are on sale.
"Shannon Development has been a committed supporter of the Georgian House project, and we are delighted to be working with Limerick Civic Trust in this new venture. We wish them every success with the management of the Ashes Exhibition which we are confident will attract additional visitors to the city," said John King, chief executive office, Shannon Heritage.

Angela's memorial: two of the stars of the film, Angela's Ashes, Peter Halpin, Mungret, left, and David Marsden, are all dressed up for the opening of the Ashes Exhibition at 2, Pery Square (LL)

He said there were possible opportunities also to "restore the laneway to its original condition, and expand the exhibition".

The Ashes Exhibition is near many of the landmarks mentioned in the book and featured in the film ssuch as Pery Square and the Crescent which overlooked the Limerick Lanes where the McCourts were reared. Leamy's School House, Ozanam House where St Vincent de Paul held

meetings, the People's Park, South's Pub, and Limerick railway station.

The exhibition in the coach-house, appropriately exit on to one of the old Limerick lanes, where Frank McCourt spent much of his youth.

Admission to the Ashes Exhibition is £2 for adults and £1 for children, students and senior citizens. A family ticket, admitting two adults and up to four children is available at £6. "The Ashes Exhibition

will compliment the Georgian complex. Throughout history, like all great cities, Limerick's fortunes have experienced peaks and troughs. Together the two attractions will illustrate the cyclical nature of Limerick's development from the affluent Georgian period, to the depression era, and coming full circle to the present day and once again more affluent times," commented Denis Leonard, Director Limerick Civic Trust.



James McMahon timber providers have appointed Douglas McCormick as general manager to their premises on the Dock road.

Mr McCormick has worked with McMahon's for the past seven years.

James McMahon timber providers is one of Ireland's oldest and largest independent timber importers and providers. The company has been in Limerick since 1830.

Train service looks to be back on rails

By SUE McINERNEY

LIMERICK passengers and train drivers are playing a waiting game at Colbert Station this week.

Passengers are waiting on the platform, while drivers are waiting in the wings for a resolution to the current rail dispute.

However after days of disruption it seems that Limerick's rail service may be back on track.

According to Jim Gallivan, business development manager at Colbert station all direct trains from Limerick to Dublin and Dublin to Limerick are operating at the moment. This is four trains to and from Dublin each day.

An extra train service to Dublin at 11.15am has also been added. It is not known how long Limerick's direct rail service to Dublin will continue operating, but it is hoped to continue until Saturday.

After a week of disruptions, there has been no breakthrough and the stand-off continues between the Irish Locomotive Drivers Association, ILDA, and Iarnrod Eireann management.

The dispute revolves around changes to the train drivers' working conditions as outlined in the document, A New

Deal for Locomotive Drivers, which was implemented last Sunday.

The deal was accepted with 112 votes by two unions, SIPTU and the NBRU. When the agreement was being discussed, ILDA had 114 members of the 265 qualified mainline train drivers, but were not included in the negotiations or in the voting process.

Iarnrod Eireann management continue to refuse to enter into discussion with ILDA. They do not regard them as one of the official trade unions, but as a "break-away" group.

Christy Holbrook, president of ILDA, confirmed that his members were attending for work each day at Colbert Station as they were around the country.

"They are prepared to work their old agreements," he said.

However, management at Iarnrod Eireann is not permitting ILDA members to perform their duties until they accept the new deal.

Mr Holbrook continued: "It is not our wish to inconvenience our customers. But they're changing our conditions and our contracts of employment without consultation with us and without our agreement."

ILDA members believe that the new deal is "seriously

flawed" and they highlight some of their major concerns.

In particular they feel that the health and safety of both drivers and passengers may be compromised by an increased risk arising from the lengthening of their working day.

ILDA's membership is growing and now stands at 130 members, nearly 50 per cent of the qualified mainline drivers.

They have also gained the support of the SIPTU and NBRU members in Cork who are refusing to work the new deal in solidarity with their colleagues.

The ILDA president said that they wanted to enter into dialogue with the other concerned parties to ensure a swift resolution to the dispute.

For customers however, the situation remains bleak with still no sign of mediation between ILDA and Iarnrod Eireann management.

Although the situation is improving it is still advisable to contact Iarnrod Eireann on its information line on 1850 366 222, or the Colbert Station passenger enquiries line on 061 315555 before travelling.

Limerick priests for Jubilee

TWO Limerick priests will speak at Ireland's first national Jubilee 2000 family festival in the Green Glens Arena, Millstreet, from June 23 to 25.

Fr Peter Byrne, a Redemptorist priest, and Fr John Harris, who is currently studying in Rome, will address the festival which is part of the

national jubilee celebrations.

They will be among the many speakers at the festival celebrating the family and family life.

Fr Byrne, based in Mount St Alphonsus, has written 22 books and booklets over the years. He will speak about the role of the 10 Command-

ments and the family. He will also carry out a healing ceremony at the festival.

Fr Harris is originally from Limerick but he is studying in Rome. He has great experience of working with young people and is a popular speaker with Credo and Youth 2000.

customer, which this

WE CAN ST
CONTACTED
062 - 37144/55
or 086-2513313

CATHERINE O'MAHONY
SOLICITOR

is pleased to announce that she has commenced practice at:

22 THOMAS STREET
Limerick

(Opposite City Centre Car Park)

Telephone: (061) 400388

F24-01-2567

**Summer
Fashions
in Limerick**

Fantastic New
Collections for
Summer in Our
Extended Fashion
Department

You're Always in Fashion
at

Adeela
fashions size 10-32

48 WILLIAM ST. LIMERICK Tel: 061 - 41 0424

SIZES 10-32