

# Kennedy Mayor but who's next?

By LEADER REPORTER

FOLLOWING THE election of Ald. Pat Kennedy of Fine Gael as Mayor of Limerick this week, the big question in city political circles is: Who will be Mayor next year?

Fianna Fail and Fine Gael have entered into a two-year pact and in 1986 Limerick will have a Fianna Fail first citizen.

Cllr. Paddy Madden is the longest-serving Fianna fail councillor who has not been Mayor and in the pre-O'Malley expulsion times—would have been the automatic choice.

## Intervention

But the intervention last week of party leader, Mr. Charles J. Haughey, to ensure a known supporter of Deputy O'Malley would not be the party's leader on the council throws a new light on the subject.

Mr. Haughey instructed new councillor, Mr. John



Mayor Kennedy celebrates with a kiss for his wife Loretto.



Cllr. Prendergast invests his successor.

O'Connor, a member of the party's national executive, to install Cllr. Bourke as leader

of the party on Limerick City Council—a similar scenario could ensue next year.

The new Mayor-Senator and Alderman—Pat Kennedy was proposed by Ald. Gus O'Driscoll and seconded by Cllr. Bobby Byrne at the Mayoral election in the County Courthouse on Monday night last.

But earlier at a meeting in Sarsfield House between the six Fine Gael councillors the real Mayoral election took place. Three of the six councillors' names went before the meeting—Ald. Kennedy, Ald. Tim Leddin and Cllr. Byrne. Ald. Leddin did not get a second and Ald. Kennedy subsequently defeated Cllr. Byrne by four votes to two.

At the election proper in the County Courthouse, Ald. Jim Kemmy, D.S.P., was the only other candidate. He was nominated by Cllr. Jan O'Sullivan in her maiden speech and seconded by Cllr. Tim O'Driscoll.

Ald. Kennedy won the vote 12 votes to five—he was supported by Cllr. Frank Prendergast, Labour, the five

Turn to page 2



Mr. Skelly.

"Shannon has been designated the trans-Atlantic airport by the Government", he stressed, "and the greater number of passengers on these flights were booked to disembark here".

Mr. Skelly pointed out that there was a total of 581 passengers booked for Shannon and hundreds of friends were awaiting their arrival.

"Apart from the loss of business to the airport, Shannon passengers were greatly inconvenienced by being taken on to Dublin.

"A stopover would not have upset the pilots' plans".

He felt that even though the three Jumbos were about to be grounded for the duration of the dispute, the flights should have been terminated at Shannon for the convenience of the greater number of passengers.

Mr. Donal Carey, T.D., on Wednesday complained to Transport Minister, Mr. Jim Mitchell, that Aer Lingus had overflown the airport on three occasions.

## Dr. Chambers

The former managing director of Molex Company in Shannon, Dr. William Chambers, has been appointed as director of the IDA's national linkage programme.



Right: Mr. St. George.

disgust and resentment..." However, Malachy and Frank McCourt have been delighted with the big crowds who have been packing the Belltable.

Turn to page 2

# 'Saint' raps 'Blackguards'

By LEADER REPORTER

"A COUPLE of Blackguards", currently running at the Belltable, couldn't be more aptly titled, according to Limerick rugby personality, Mr. Charlie St. George.

The Parnell Street publican labelled the show "disgusting."

## Friendly

He told the *Limerick Leader* that he considered the revue, being staged by two Limerick emigrants now domiciled in the United States, Malachy and Frank McCourt, as "irreligious and lacking in respect."

Mr. St. George said that he was friendly with the McCourts and had encouraged patrons of his Parnell Street bar to go and see the show on opening night.



Mayor Pat Kennedy welcomes Malachy (centre) and Frank McCourt to Limerick this week.

But he told me: "It is utter rubbish; the name of Limerick and its citizens are being dragged through the mud."

"We have never had such irreligion and blasphemy on a Limerick stage before.

Two sons of Limerick are using the stage to dip into verbal pollution."

Mr. St. George, who came to the Limerick Leader office to make his protest, said: "I want to express my

looking for a mira

He explained that a senior pilot at Shannon threatened with 'ing' because of a heart condition. Father Tom Long was reduced to the pi recalls: "He had ma faith for a non-Chri This year Captain Si turned up again Novena, and told th that he had got his and was again flyin the world. "I was having a meal v



An early picture of the Miss Frances Gleeson M., whose death occu with tragic suddenne while on her way to m Mass in Coventry rec Deceased, who came well-known "Parish" was born at No. 40 Athlunkard Street, fr which address she le 40 years ago to take u employment in Brita funeral after Solemn Requiem Mass in St. l Church took place to St. Laurence Cemete Saturday last. May st in peace.

## 'Mall bill £6 millio

It was reliably lear Friday that the esti damage for last night's fire at Th William Street, may b as £6 million.

Meanwhile, a senic source said an intensi tigation into the cau: fire was in progress page 10.

## Weathe

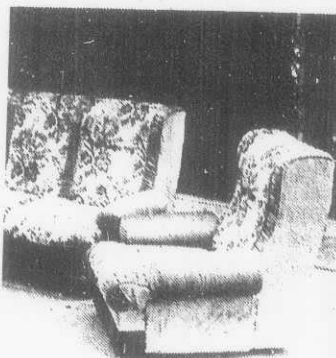
Scattered shower heavy and thunde develop in all area Limerick region thi afternoon and night ing to the Met. ( Shannon. Saturday pected to be a warn dry day with some showers. The futre is for day, warm w continue until ea week.

# HOME CENTRE

day till 9 o'clock

9.00

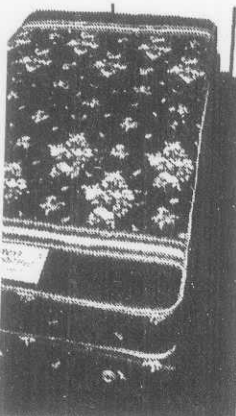
3-seater Couch & 2 Matching  
Drayton & Drayton Velour.



ink & Brown & Wine.

5.00

& Divan Base. Base has 6 Legs, for  
a support.



He recalled that the VITAL (Votes In The Arts Locally) campaign was launched in Dublin just prior to the local elections. It was organised to highlight the necessity for local politicians to consider the arts at local level when distributing financial allocation to arts groups and when electing arts representatives on committees and sub-committees.

## Alternative

Said Mr. Walsh: "It is necessary for our local representatives to be far sighted in recognition of the importance that the arts play at local level.

"In an age where more and more people are not fitting into structured employment, the arts offers an alternative to 'unemployment.' Recognising this reality will fulfill the desires of our society to accept more leisure time without wasting it.

"Local representatives must be aware enough to provide well financed arts projects and groups as one important area of leisure time."

## St. George

(From page 1)

Earlier in the week Frank told the *Limerick Leader*: "We just got a few negative comments."

But he and his brother said that they were portraying Limerick as it was in their days growing up here. "It was of pigs' feet and retreats," commented Frank.

They finish in Limerick this Saturday but have a week in Sligo to follow.

administered by an education committee, which consists of representatives of the Irish Exporters Association, as well as representatives of Educational interests, business and professional associations.

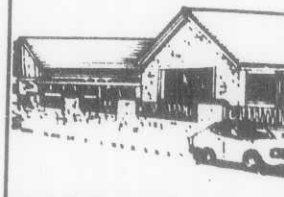
The education committee is the examining body, and awards a Diploma to students who successfully complete the prescribed programme of studies, and who, in addition, satisfy the committee that they have approved practical experience of import/export activities. Examinations are held once annually during months of May/June. Further information and course details can be obtained from:

Deirdre Frawley, Adult Education Officer, City of Limerick V.E.C., Athenaeum Building, 30 Upper Cecil Street, Limerick. Phone (061) 47688.

Deirdre Frawley,  
Adult Education  
Officer,  
City of Limerick V.E.C.,  
Athenaeum Building,  
Upper Cecil Street,  
Limerick.

Phone (061) 47688.

See accompanying  
article.



## QUALITY SUITES

CROOM

— OPEN 7 DAYS —

## SALE ★ SUMMER ★ SALE

Specialists in Luxurious Lounge/  
Living Room Suites

**THIS WEEK 50 SUITES TO CLEAR**  
**MANY HALF-PRICE**

Price Range: £389 - £999.

**25% OFF BEDS.**

Regency Dining Room Suites, £1,060.

Now ..... **£760**  
(Limited Number)

**FREE WEEKLY DELIVERY.**

**Open Daily: 12.00-6.00 . Sun: 3.00-6.00.**

**OUR GUARANTEE:** If within 14 days of purchase  
you can buy any of our suites cheaper we will  
refund **TREBLE THE DIFFERENCE.**

of rations

**SPE**  
**£100**

8 cu. ft.  
5 cu. ft.  
6 cu. ft.  
4-Plate  
Autom.  
Autowa  
Twin T  
Tumble

**BIG F**

Spe  
Special

**ELECT**

**Don't**

**M**

**PA**