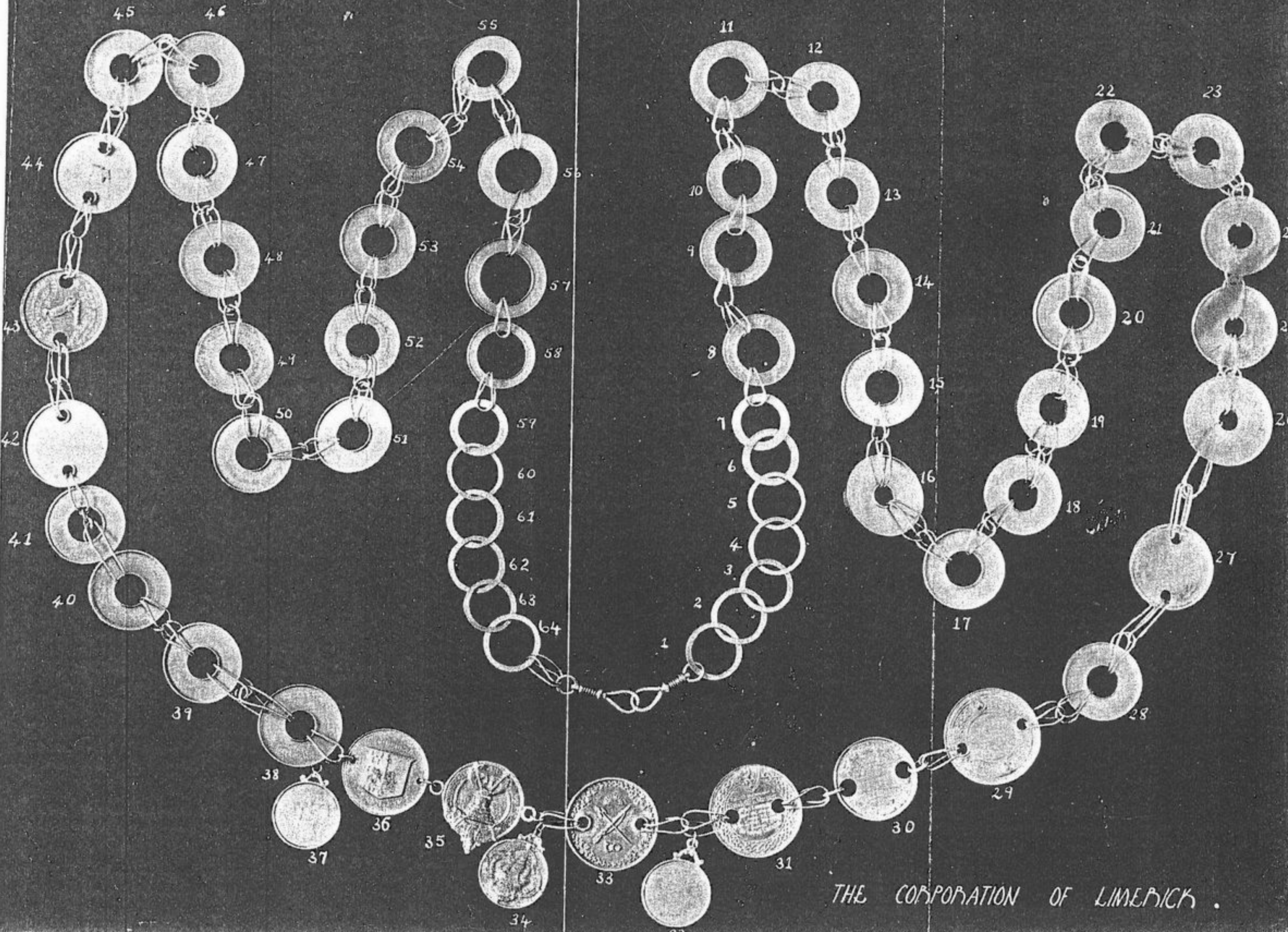
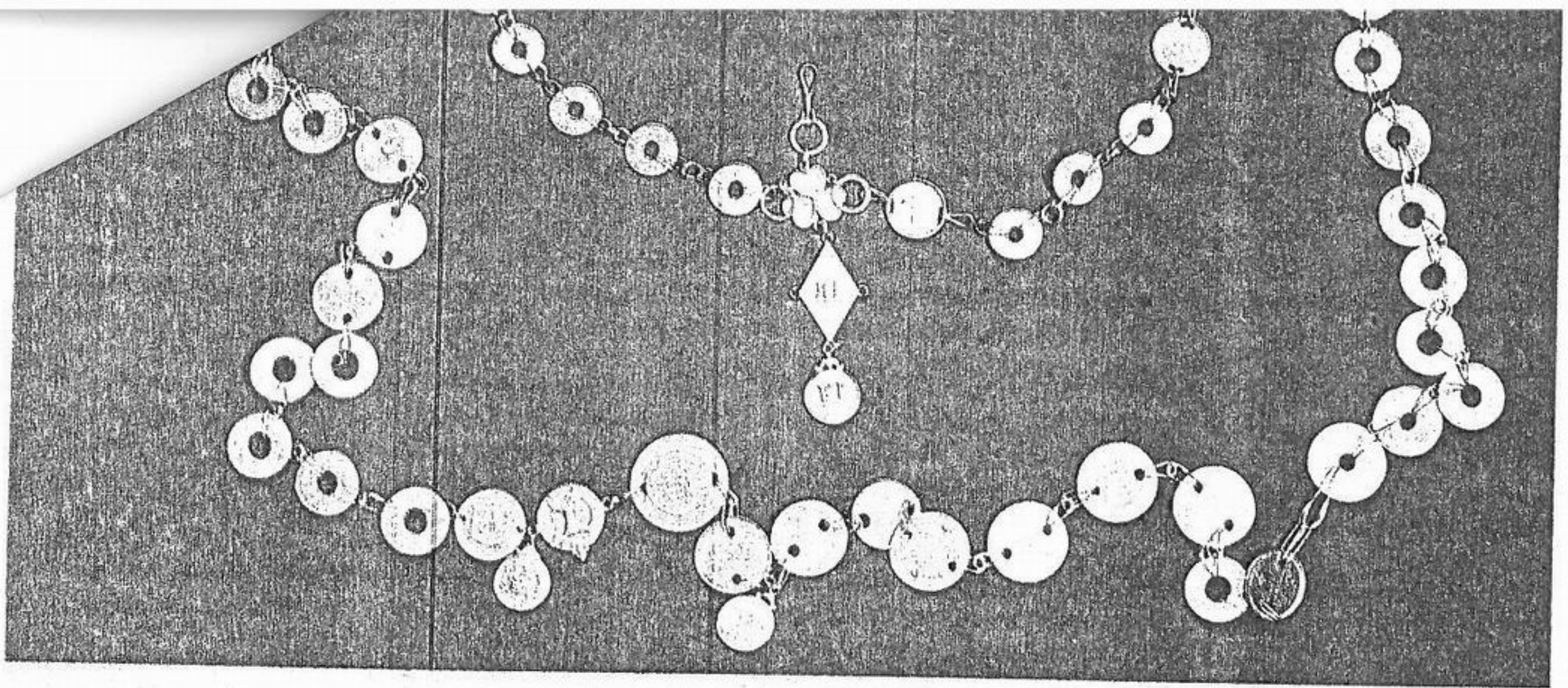


Mayoral Chain

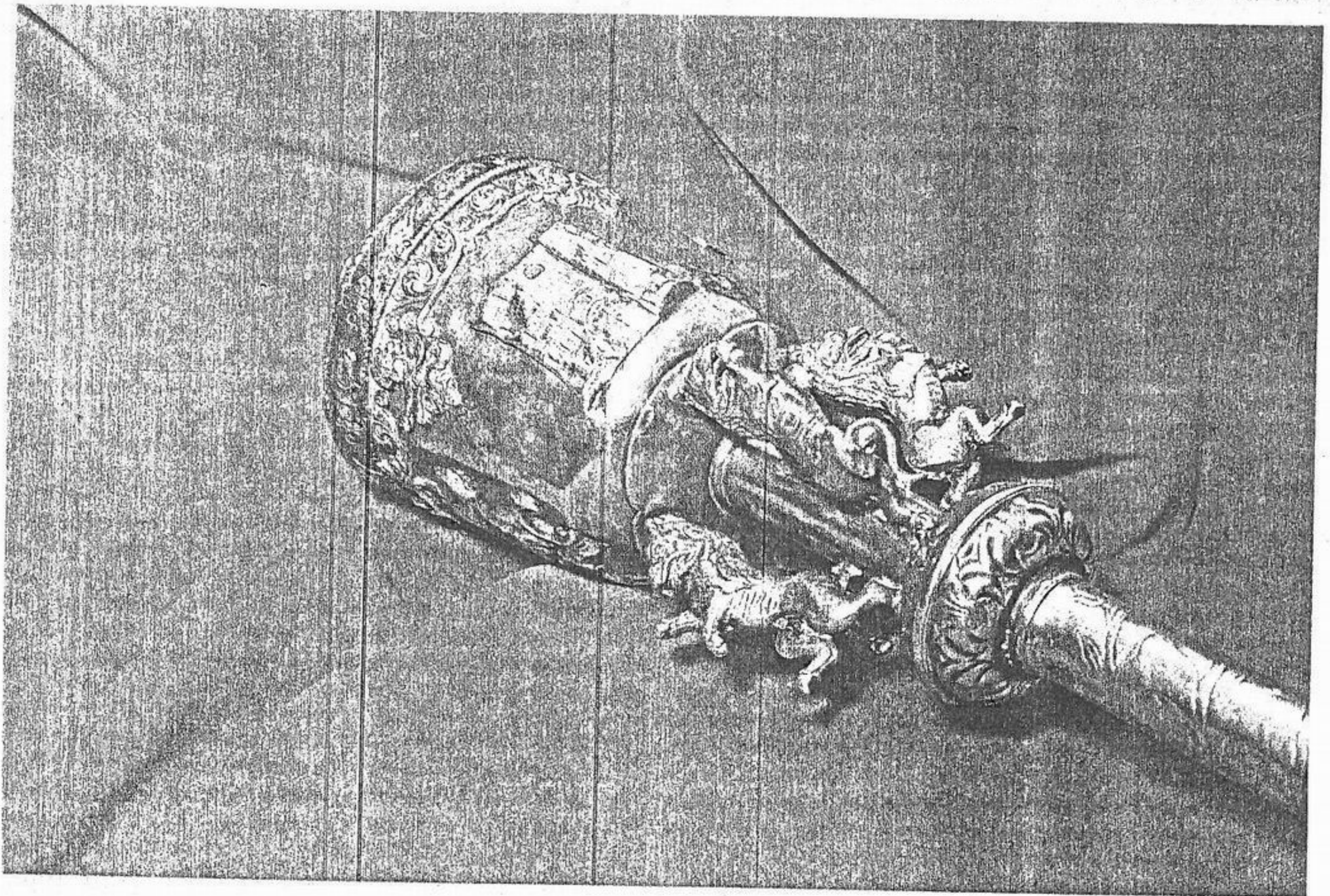


THE CORPORATION OF LIMERICK.





*Corporation Mayoral Chain, dating from the 19th century.*



*Corporation Ceremonial Mace, dating from 1739.*





Mayoral chair



# Limerick Corporation Yearbook and Diary 1990



LIMERICK CITY LIBRARY  
REFERENCE DEPT.

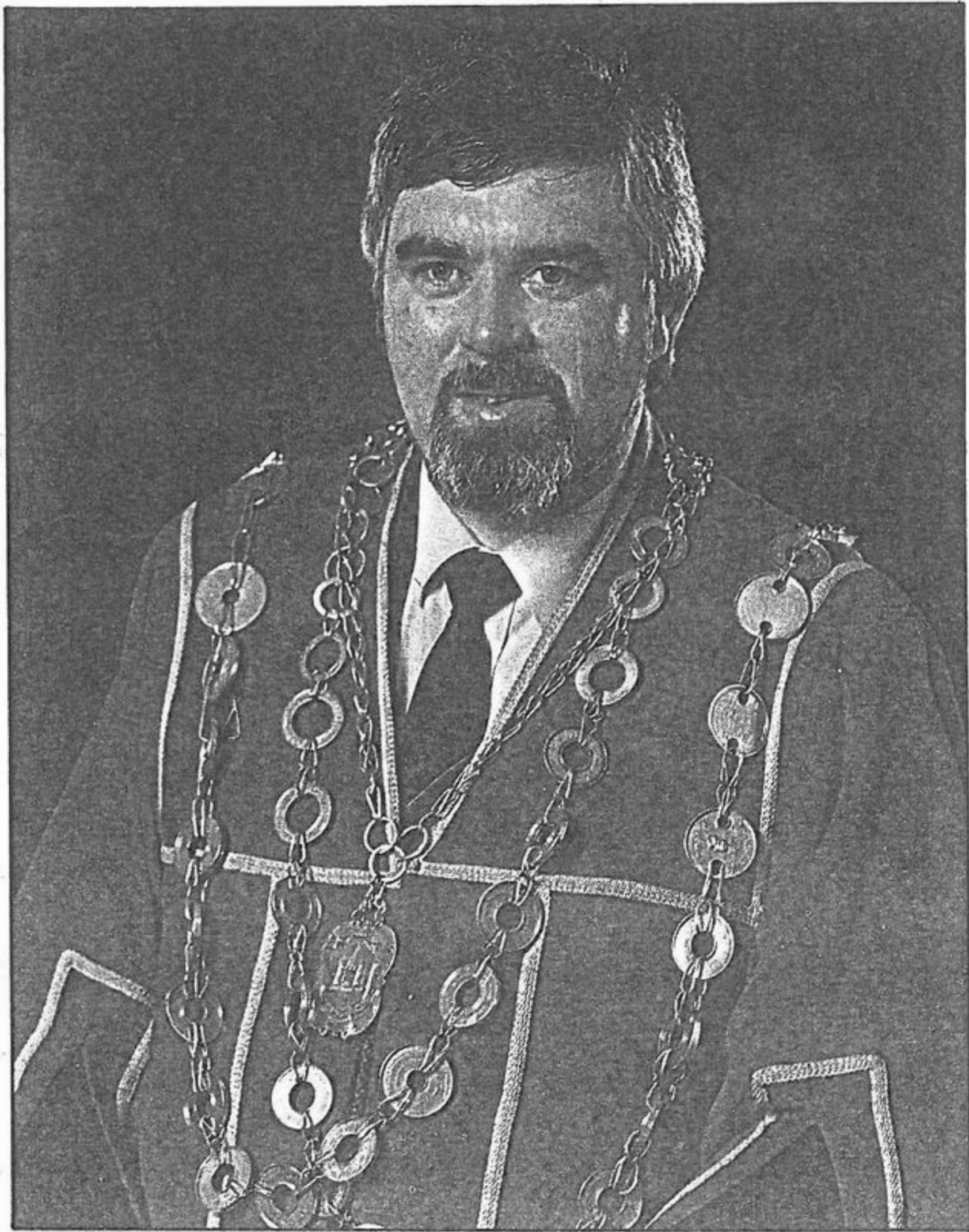


*The Right Worshipful Mayor of Limerick*  
**Alderman GUS O'DRISCOLL**



*Gerde O'Keefe*

# LIMERICK CORPORATION YEARBOOK AND DIARY 1989



*The Right Worshipful Mayor of Limerick*  
**Councillor PADDY MADDEN**