

22.06.10

LIMERICK  
Chronicle

## @ TOP 5 WEB STORIES

- 1 Man 'fascinated' with black girls jailed
  - 2 Thousands walk under the Shannon River
  - 3 Pink rocks Thomond Park
  - 4 Man 'fascinated' with black girls jailed
  - 5 GAA chairman lashes out at hurling fans
- Keep up to date with [www.limerickleader.ie](http://www.limerickleader.ie)

## WEATHER OUTLOOK

## WEDNESDAY

Scattered showers making for an overcast day

## THURSDAY

Still cloudy with fewer chances for showers

## FRIDAY

Return to fine weather with a high of 21°C

## 5 THINGS TO DO THIS WEEK

- 1 Vinyl classics at Bourke's Bar, Wednesday night
- 2 Battle for Bob slot takes place Friday at Doan's
- 3 'Duality' exhibition in the Normoyle Frawley Gallery
- 4 Limerick v Clare in the hurling minor Friday 7.30pm
- 5 Roots Factory @ Baker Place, Saturday from 11pm

## INSIDE THIS WEEK

Charity event packs a punch for children's unit



P14

A sneak peak at some top hats this racing season



P19

## CONTENTS

- News 1-18
- Style 19-21
- Health and Wellbeing 22
- Parenting 23
- Food 26-27
- Property Today 29-31
- Motors Today 33-36
- Sport 37-44
- Business 45
- Classifieds 46-47
- CityLife 49-60

## CONTACT US

Limerick Chronicle  
54 O'Connell Street, Limerick

Newsroom 061-214503  
[news@limerickchronicle.ie](mailto:news@limerickchronicle.ie)

Advertising 061-214500  
[advertising@limerickchronicle.ie](mailto:advertising@limerickchronicle.ie)

## DEATHS

**MALONE** nee McNerney, Singland Crescent, Garryowen, 20th June, 2010 at The Regional Hospital, Ann, wife of the late Ambrose. Sadly missed by her loving children Michael, John, Susie, Ambie, Paddy, Helena, Antoinette, Mary, Barbara, Peter and Gary, brothers, sisters, sons in law, daughters in law, grandchildren, nephews, nieces, relatives, neighbours and many friends. May she Rest in Peace. Requiem Mass today Tuesday to 12 noon with burial afterwards to Mount St. Oliver Cemetery. House private please.

# Soccer to return to its Markets Field home

■ Limerick FC chairman to conclude the deal this week for close to €3m

Alan Owens

LIMERICK FC chairman Pat O'Sullivan will this week wrap up a deal for the purchase of the Market's Field from Bord na gCon for a figure thought to be close to €3m, the Limerick Chronicle understands.

The Ballylanders native, who got involved with Limerick FC in June of last year, has been attempting for some time to put a deal together to return the club to the spiritual home of Limerick soccer, and following a recent meeting with Minister of Sport Mary Hanafin, it is understood that a deal has been agreed in principle between the parties.

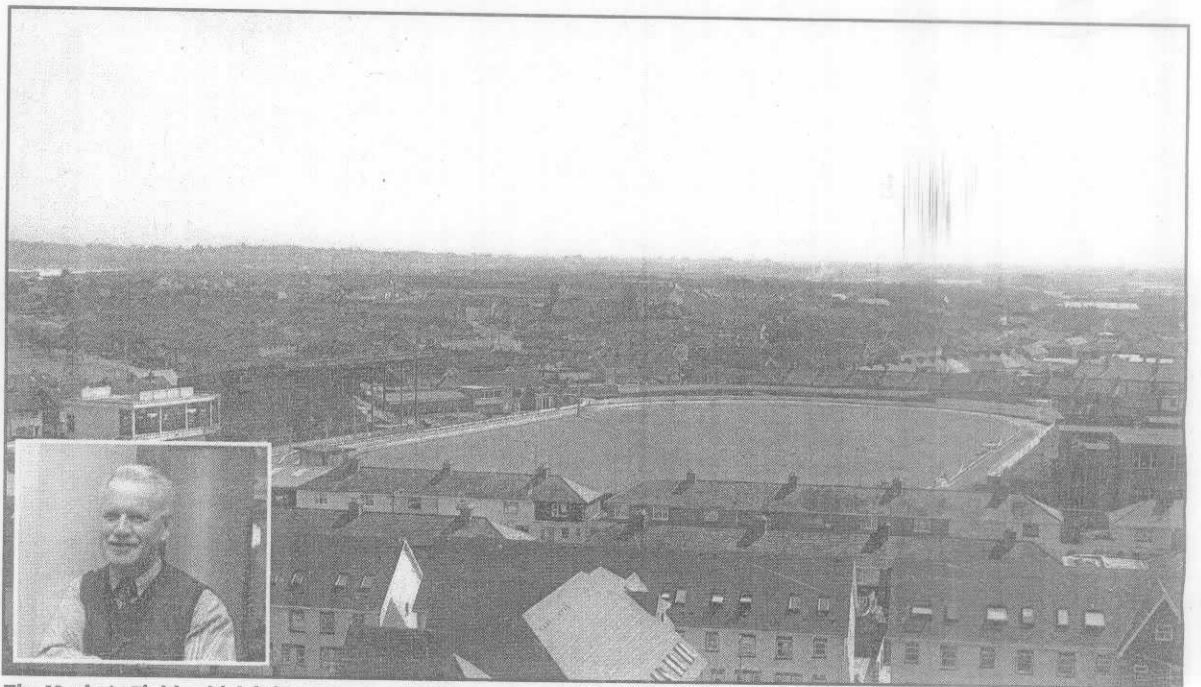
A source close to the discussions between Mr O'Sullivan and the greyhound board has said that "negotiations are at an advanced stage, and both parties hope to reach an agreement this week".

The Chronicle understands that an offer in the region of €2-3 million will be agreed this week.

It is 26 years since senior soccer moved away from the Market's Field, and Limerick FC have made their return to the site a priority over the last 12 months.

Mr O'Sullivan revealed earlier this year that Bord na gCon and the FAI had "funded the preparation of a set of plans" for the site, which is located off Mulgrave Street in Garryowen. Gilroy McMahon, the firm of architects behind the redevelopment of Croke Park, were commissioned to produce plans for the 5.3 acre site.

It is thought that there is also



The Market's Field, which it is understood will be purchased by Limerick FC chairman Pat O'Sullivan, inset, later this week for between €2m and €3m

potential for the site to become something of a community centre, as Mr O'Sullivan alluded to in a recent interview with the Limerick Leader.

"This is a really top class 8,000 seater stadium which could then incorporate the VEC and there are other sports bodies that are interested in it," he said, adding: "That

corner of the city needs something so we are working along those lines".

Mayor of Limerick Kevin Kiely, who met Minister Hanafin with Mr O'Sullivan, confirmed that an offer had been made but no contracts signed as of yet, but said he wished to "commend" Mr O'Sullivan for his interest in Limerick soccer.

"Pat O'Sullivan has done more in 12 months than anyone has done in the last 100 years and I'd like to commend him for that," said Mayor Kiely.

Current owners of the Market's Field, Bord na gCon, are set for a move to a new €18 million premises on the Dock Road in September of this year.

## No new shopping centres should be built, warns report

CONTINUED FROM PAGE 1

But there was scepticism at City Hall this Monday night over whether other local authorities would share the same desire for Limerick city to be the main retail centre in the region.

Independent Cllr John Gilligan said he recalled when the 2003 report was drawn up, and "saying it would be a waste of time."

"The city is going down the drain," he added.

Labour Cllr Joe Leddin agreed the "first document didn't live up to its original intention", but complained that a lot of retail space in the city, especially on Cruises Street, is too small for major international retailers which they hope to attract.

Cllr Gerry McLoughlin described Limerick as a "ghost city", while there was widespread criticism of the undeveloped Opera Centre, Limerick's fabled "shopping mecca",



Mayor Kevin Kiely: said report showed that Limerick County Council were 'negligent in granting planning permission for white elephants on the outskirts' of the city

which is "doing untold damage to the image of the city", according to one of the sectoral interests at the meeting.

The extension of the boundary would allow the city's rates base to broaden, with a reduction of rates



Cllr Joe Leddin, who agreed that the 'first document didn't live up to its original intentions' but added that a lot of retail space is too small for the international retailers

for those operating in the city, said Fine Gael Cllr Ger Fahy.

Kieran Reeves, senior planner, told the economic policy and future planning strategic policy committee, that there were a number of flaws in the original document.

"The previous retail strategy was over optimistic in its retail expenditure growth assumptions.

"It had very generalised policies and there is now a duty on us as a city council to be vigilant on all planning applications," he said.

The population growth of the region was also over-estimated in the previous report, and did not adequately take into account the growth of special forms of trading, such as internet shopping.

The report concludes that Limerick city is losing out to suburban shopping centres.

To counteract this, a new retail hierarchy has been envisaged with Limerick city in the top tier, followed by Ennis, Shannon and Newcastle West respectively in the second tier.

In the metropolitan sub-hierarchy, Limerick city would again lead in the dominant position, followed by Dooradoyle, Caherdavin, Castletroy, Parkway, Roxboro and Moyross respectively in the second tier.