

AT OPENING OF MOTEL

ntial expansion of Ltd., of Shannon, press conference and by Robert G. Page, ging Director.

966 had been and would nt business year. Sales all-time high, with over employed. His further tial increases would take e first half of 1967, with as many as 1,700 people.

those attending included the Chairman, Mr. Brendan O'Regan and his senior staff officers.

Welcoming the new expansion Mr. Brendan O'Regan, Chairman, Shannon Airport Development Company Ltd., said that they aimed at a growth expansion of 500 workers a year with a proportion of 80 per cent. men to 50 per cent women in the estate. If E.I. were to meet their full labour requirements locally they would create an imbalance in the Shannon Industrial Estate. The expansion which the Company had now announced was a milestone not only in the industrial life of Shannon but in the national as a whole.

Mr. Page said that E.I.'s existing plans would meet the targets they had established with regard to the known availability of labour. Irish workers had a manual dexterity of a high level; they responded to leadership, learned fast and were intelligent. Young Irish science graduates were very well founded intellectually but were assigned in school to do research rather than production work.

Injured in accident

A 14-year-old boy, Noel Kelly, of 4 Lenihan Avenue, Prospect, was removed to Barrington's Hospital this afternoon with injuries received in a road traffic accident at Upper William St.

Wandering horse

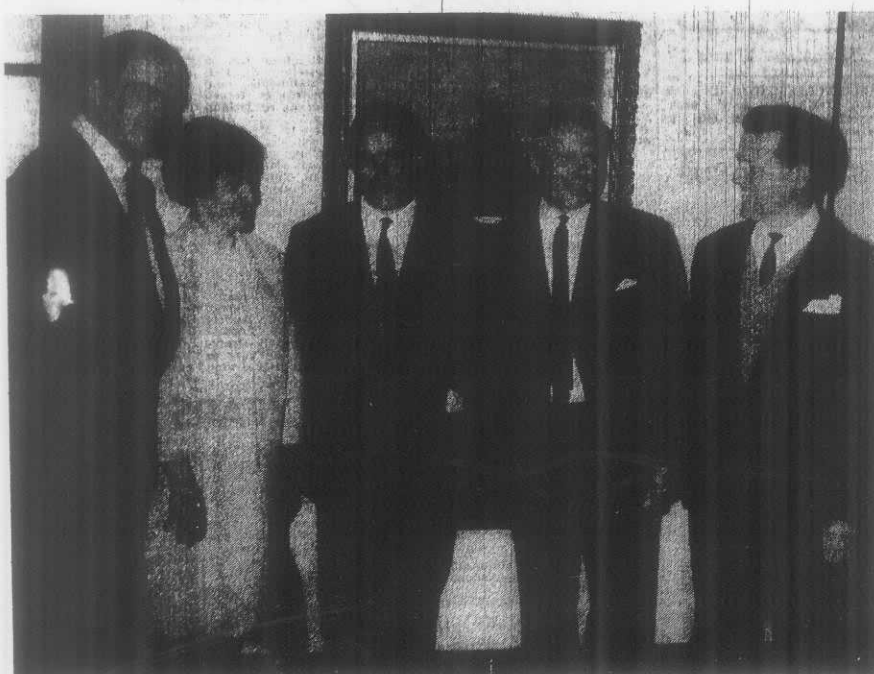
James Cross, Dublin Road, Singland, Limerick, was fined £5 at Friday's sitting of Limerick City Court. He was convicted for allowing a horse to wander in O'Connell Avenue.

FASHION

for & WINTER



JTY" w in Gray L 28th dds



Pictured at the opening of the new Parkway Motel at Dublin Road, Limerick (from left): Mr. D. B. O'Malley, Minister for Education; Mrs. Teresa Parkes; Councillor Vincent Feeney, Mayor of Limerick; Mr. Robert Parkes, owner and builder of the motel; and Mr. Brendan O'Regan, Chairman of Bord Fáilte.

Will not go forward

In a statement to the Editor of the "Limerick Chronicle" today, Mr. Patrick Donnellan, Chairman of Limerick City Vocational Education Cmte. and Harbour Board Commissioners, said that he had no intention of allowing his name to go forward for co-optation as a member of Limerick City Council at next Tuesday night's meeting.

Mr. Donnellan said that he appreciated the fact that he had been selected but felt that he had "enough on his hands" at the present time. It is understood that Mr. Donnellan's decision will come as a shock to the members of the Fianna Fail party and many others.

New Passenger Sales Manager

Mr. Donal F. Downing has been appointed Passenger Sales Manager for Aer Lingus-Irish International Airlines. Born in Ballynastulla, Co. Mayo, Mr. Downing was educated at Crescent College, Limerick, Blackrock College, Dublin, and University College, Dublin, from which he graduated with degrees in Engineering, Commerce and Economic Science. Prior to joining the Aer Lingus Engineering Department he worked for a number of years with the Electricity Supply Board. He was appointed Assistant Sales Manager for the Irish airline in June, 1965.

Mr. Downing is a member of the Irish Management Institute, a graduate member of the Royal Aeronautical Society, a graduate member of the Institution of Mechanical Engineers, a member of the Engineers' Association, Blackrock College Past Pupils' Union, and Halsaddan Water-Ski Club, Howth. In his new position, Mr. Downing will be responsible for the company's regional sales areas in Europe, Ireland and Afro-Asia, the group selling function in the company's head office, and for liaison on matters concerning passenger sales policy with the regional offices in Britain and North America.

Ireland on G.A.T.T. Farm

The General Agreement on Tariffs and Trade has set up in Geneva a number of commodity groups, including a committee on agriculture to facilitate the conduct of the Kennedy Round trade negotiations which embrace trade in all agricultural and industrial products.

Ireland is participating in a number of these groups, including the committee on agriculture, which is now in session. The Kennedy Round discussions are expected to continue for some months.

LIMERICK'S FIRST MOTEL IS OFFICIALLY OPENED

"THERE is a most serious bottleneck in the Irish tourist industry due to the lack of motel-type accommodation and unless there is an upsurge we are in for very serious trouble." This was stated by Mr. D. B. O'Malley, Minister for Education, when he opened the new £50,000 ultra-modern Parkway Motel at the Dublin Road, Limerick, yesterday afternoon.

Mr. O'Malley added that our job at a price that encouraged more and more tourists to come to our country. Due to the introduction of the £50 ceiling on foreign travel by Britain they could expect an invasion of tourists here next year and he appealed to all hotels big and small to cater for these tourists on their £50 budget. It was of national importance that they build up their tourist industry as it was their greatest hope of a sound economy. He said the proprietors of the new motel must be congratulated on providing a very necessary amenity. It was the type of accommodation they needed most if they were to avail fully of the car ferry now beginning to operate to this country.

FOURERUNNER

He added that the new motel was another step forward in the industrial and tourism advancement of Limerick and he was delighted to hear that the motel was the forerunner of Ireland. These motels would cater for the increasing number of motoring tourists which had increased from 12,000 cars in 1960 to 48,000 last year, and it was expected that by 1970 some 100,000 cars would enter Ireland during the tourist season via the car ferries.

Mr. Brendan O'Regan, Chairman of Bord Fáilte, stressed the importance of the new motel in the context of regional development. They were extremely fortunate in this region in that they were in a developing situation in the field of aviation and during the trying years of that development they had the support of Mr. O'Malley and Dr. P. J. Hillery.

He said that there was a big flow of motor car traffic during the tourist season and the motel is a symbol of the age. On the economic situation in the hotels of this country. The season was a very short one, the overheads were very high and there was a great problem with regard to staffing for a four months period of business. This motel was designed to handle peak traffic and on the question of price, he understood it would be a very competitive motel. There were six new hotels in the region in the past few years and there was a steady increasing demand for their services.

CONGRATULATED

Cllr. Vincent Feeney, Mayor of Limerick, said the vast majority of our hotels and guest-houses are doing a first-class

Best play in recent times

The Southern Theatre Group have done it again! For the past three nights at Limerick City Theatre they have thrilled packed houses with a superb performance of John B. Keane's "Many Young Men of Twenty" and there can be little doubt that this production is the best to be staged in the city for some time.

More than 2m. tons of peat fuel

Production figures for Bord na Mona during 1965 were: peat 1,379,143 tons; briquetted, 231,668 tons; and moss peat 380,472 bales.

Exports, mainly of moss peat, amounted to £320,000, slightly over the previous year's figure.

VISITING SHANNON

Seventeen representatives of the General Electric Company of America arrived yesterday from the United States for meetings with the EI Company in Shannon. These GE representatives were given the opportunity of attending this meeting by virtue of outstanding sales performance on radios, phonographs and youth electronics products during the first six months of this year. The General Electric Company is the leading manufacturer of these products in the United States and sales during the first six months period represented a record high for the Company.

The EI Company Limited of Shannon seeks its entire output to General Electric manufacturing businesses in the U.S.A. Hence, these record sales are of vital interest to employees, the surrounding communities and the Irish business of payments of tax.

After meeting in Shannon the group will conclude their visit by a tour of the local area before returning forward for a three-day visit in Dublin.

When half the passengers had to stand

LIMERICK G.A.A. fans are angry over the arrangements made by C.I.E. for train travellers to the recent All-Ireland Hurling Final between Cork and Kilkenny.

The matter was discussed at this week's meeting of the City G.A.A. Board when several delegates revealed that accommodation was so limited on the outward journey that half the passengers had to stand on corridors and sit in the toilets for the entire trip.

The train was so overloaded that the company had to provide a second train to bring the passengers back in comfort.

Many City Board officials said that C.I.E. derive much revenue from Limerick Gaelic followers, and this latest treatment for passengers on the greatest day in the G.A.A. calendar calls for investigation, they said.

After a lengthy discussion, it was finally decided to protest in the strongest possible manner, and to request that a recurrence would not take place on football final day.

Whiskey galore

Whiskey flowed like rainwater in the gutters of Thomas St., Dublin, yesterday morning, and gave locals the chance of a lifetime. A barrel of the ulisce heathia fell off a passing lorry and the bung fell out.

Before the golden liquid could wastefully flow into the drains, however, bystanders, with great presence of mind, swooped down with cups, bottles and spoons, and helped themselves, while the lorry driver arranged for a fresh bung to be fitted.

SEE BOYS' DUFFLE COATS

29/11

22-24

26-28 35/11

30-32 39/11

DUNNES STORES

for Better Value

(115.17c)

(Turn to back page)