

QUIN'S
TEA

Weddings. Weddings
SPECIALLY CATERED FOR AT
**Glentworth
Hotel
LIMERICK**

Write, Phone or Call To-Day
for Quotations. Phone 44050

Limerick Leader

Vol. 73. No. 13720

SATURDAY, OCTOBER 21, 1961

PRICE FOURPENCE

WATCHES
REPAIRED IN TWO WEEKS.
Satisfaction Guaranteed.
Bee Moynihan & Co. Ltd.
2, O'CONNELL STREET,
LIMERICK

City Edition
**HALPIN'S
TEA**

One of Europe's most modern hotels for Limerick

Will be ready for next summer

WITH THE COMPLETION OF THE ROYAL GEORGE HOTEL, LIMERICK WILL HAVE ONE OF THE MOST MODERN HOTELS IN EUROPE . . . AND IT WILL BE READY FOR THE NEXT SUMMER SEASON.

Work is being carried on at a remarkable pace on the construction of the building, which was estimated to cost quarter of a million pounds. Now, due to the recent pay increase to builders' labourers, the cost of the building will go up by £15,000.

The super-hotel will be the highest building in Limerick — six stories high, with a bar and grill on top. A glass wall at the rear will give visitors a panoramic view of the River Shannon and surrounding countryside from the top of the building — a view which can be enjoyed from the grill room or the bar. A total of 70 bedrooms will be provided, each with its own bathroom and toilet, plus the comfort of TV, radio and telephone.

A Limerick investment

There will be two passenger lifts plying between the ground floor and the top while off the main lounge there will be a special winter garden complete with hundreds of colourful plants and a fountain.

The hotel will also have a large ballroom capable of holding no less than one thousand people and will have an unusual form of design.

The Royal George will offer facilities never before enjoyed in Limerick and will be the re-

sult of the investment of Irish capital only. In fact, as a matter of special interest, not only is the full capital Irish, it is the sole investment of Limerickmen who have enough confidence in the future of Irish tourism and in their own city, to sink their money into it without hesitation.

One of the biggest

It will create one of the biggest hotel groups in the South of Ireland. The Directors of the Royal George are also owners of

the Glentworth Hotel.

Man behind the scenes guiding the progress of both is another Limerickman, Mr. Edward J. O'Sullivan, A.C.C., who is Secretary of the Royal George and is Manager and Secretary of the Glentworth.

Mr. O'Sullivan is a man with a keen eye on the future and like many other enterprising men in business, he has already taken steps to ensure a good part of the tourist trade for Limerick in the seasons ahead.

He recently toured England, meeting travel agents and other

organisations in an effort to interest them in visiting Limerick. His efforts have met with very considerable success and Limerick should benefit as a result. Already, bookings for the new Royal George are "quite heavy."

The Royal George will be mainly a top class tourist hotel while the Glentworth will continue along its present lines. I was told that the manager for the Royal George has already been appointed but his name has not been disclosed yet. However, he is "a man of tre-

By TOM TOBIN

mendous experience" and one of the best-known in the country.

The cost

Looking through the details of the proposals for the Royal George, I was interested to see that carpeting alone will cost £10,000. . . . Electrical fittings, etc., will cost another £10,000; soft furnishings will amount to £25,000; central heating is stated to cost another £10,000. . . . and, as mentioned at the outset, the whole bill will come to £265,000—over quarter of a million.

The builders are Messrs. J. and D. McIlvenna of Dublin who hope to have the roof of the new building up by Christmas. The Architect is Mr. John C. Thompson, Limerick, who visited a number of the well-known continental hotels to see modern design and development in operation. Mr. Thompson selected several of these for inclusion in the Royal George plan. The representative of the Thompson firm on the building job is Mr. Michael O'Dea, who is a nephew of Irish comedy star, Jimmy O'Dea.

One of the most interesting new ideas to be put into effect in Limerick's new hotel is one designed to give mothers "an

easy mind."

Radio alarm

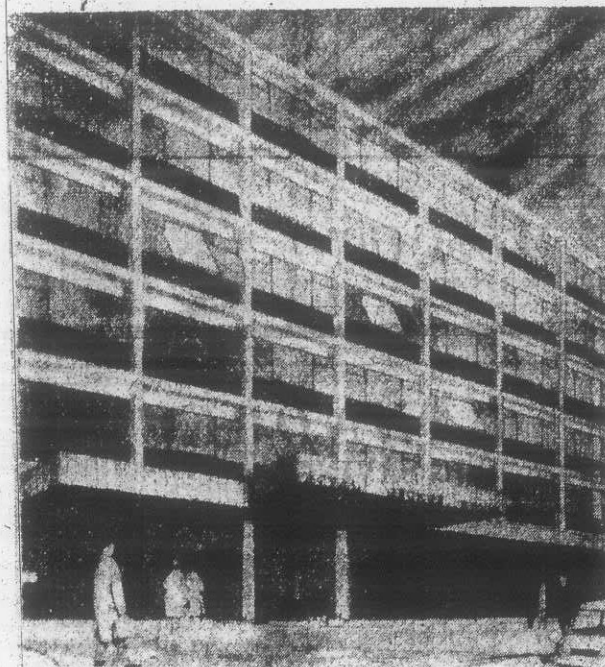
It is a simple device which will be installed in rooms for children. If the parents wish to go out for the night or if they wish to visit the ballroom, the diningroom, the roof-top bar or grill, all they have to do is switch on the alarm system. This is a form of radio communication.

Should a child left alone in any room cry, the voice will be heard over the special radio giving the number of the room and the parents can be contacted immediately or the child can be attended to by a member of the staff.

Present arrangements are that the new hotel will be finished by the 1st June next—just fourteen months following the final move-out from the 130 years old building.

And at the Glentworth Hotel, various improvements will be carried out in the months ahead which will make it even more comfortable.

But at the Royal George, local investment will be seen to the best advantage—Limerick will have an hotel which may well be the ideal of the Irish hotel trade.



WOMEN RISK THEIR LIVES DAILY TO GET WATER

Crawled a half-mile in pain

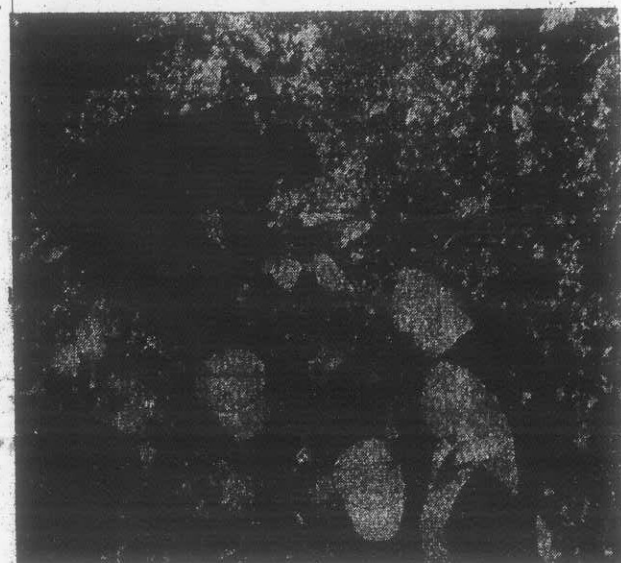
IN THE LITTLE VILLAGE OF RAPALLA, NEAR GLENROE, CO. LIMERICK, WOMEN RISK THEIR LIVES TWICE DAILY TO GET WATER. THEY HAVE TO MAKE A JOURNEY OF ABOUT A HALF MILE UP A DIRT TRACK, ALONG A RIDGE ON THE SIDE OF A MOUNTAIN, AND THEN LOWER THEMSELVES ABOUT SIX FEET INTO A DITCH BEFORE FILLING THEIR BUCKETS.

The conditions under which they have to make the journey were primitive hundreds of years ago, but there is no alternative source of supply.

I made the trip to Rapalla this week accom-

panied as appalling. We left Rapalla with words of thanks ringing in our ears and

Caught in the



DISPLAY OF LIMERICK MANUFACTURED GOODS ATTRACTIVE PRIZES FOR THE SHOPPING FESTIVAL

Suits of clothes, overcoats, and shoes, are included in the list of prizes to be won during the forthcoming Limerick Shopping Festival. To the lucky ones, the winning of these generous and attractive contributions by local firms will be a further means of showing them the high-class quality of Limerick manufactured goods.

Any civic scheme that has for its objective promotion of local enterprise and the exploitation of high standards of production, is deserving of the fullest co-operation and support of the

Todds display windows in O'Connell Street, to be opened by the Mayor of Limerick at 8.30 p.m. on that date; (2) the festival dance in the Stella Ballroom the same night, at which a number of special spot prizes will be awarded.

in Coffey return. s hooker, will play a Coffey—who had week's game with ck at wingforward, reduce a newcoming division in David built youth assisted full back last term as ago he won a senior cup medal College and has inter. Gerry Shea-the centre to make O'Brien of Nenagh e of defence Tom Gardener are the pack is on usual

EAMS.
—F. O'Connell; D. ggan, G. Clancy, J. oley, W. Leahy; J. ane, S. Slattery, M. ley, M. Leahy, J. ins.

III—J. Donnellan; llen, P. Tierney, R. illins, J. Baggott; G. Connery, C. Liddy lloy, A. Hackett, A. ahy, B. Mangan. Redmond, H. Elliott, J. O'Brien, D. pencer, H. McMahon, M. Allen.

J. O'Brien; J. Ryan, Sheahan, D. Coen; B. leary; T. Shine, J. ulaghan, B. O'Dowd, W. Slattery, S. Mc-ey. A. Colbert; B. Cotter, V. Hassett, R. Don-ino, B. O'Farrell; J. Vinch, J. Quinn, T. cGrath, T. Coffey, T. R. Ryan.

JUNCTION

ay's

t

erick Junction