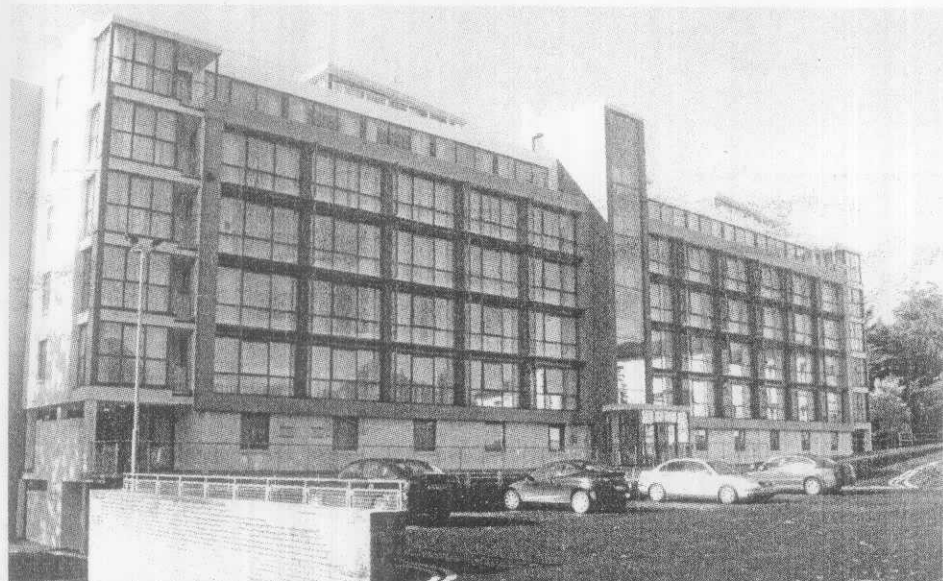


Clarion Suites Hotel



LIMERICK's first hotel comprised of suites could claim an occupancy rate of 80 per cent in its first month trading after Easter. That figure is already moving closer to 90 per cent, according to the Clarion's regional management based at Steamboat Quay.

Clarion Suites was the city's introduction to the apart-hotel concept and a staff of 50 were employed to run it. Making the most of the listed White House original, reception areas, bar, restaurant, meeting rooms are located in the period house, extended by a conservatory off the restaurant. Apartments and the duplex terraces overlook the gardens.

There is a gym and three blocks of suites, and oodles of parking off the Ennis Road; O'Connell Street is less than a mile. Clarion Hotels lease the Ennis Road enterprise from Budelli Ltd.. Local developers Pat Chesser and Pat Whelan got together to develop the old Ardhú Ryan Hotel's prime and redundant site, controversially at the time, and Clarion Hotels came on board when the green light lit.

There are 43 two-bedroom apartments, 18 one-bedroom apartments and six duplex units which double up for use at meeting rooms and training nubs.

A one bedroom suite is a generous 600 sq ft and boasts a sitting room/ dining area the same size as the 800 sq ft apartment. All bedrooms are double in size, bathrooms are fitted with power-shower/ bath (varies). Every unit has a 'wet area' of kitchenette for self-catering that is either separate or discreetly integrated with the dining area. The duplex offers more space and has a wraparound terrace on the rooftop property with views of the garden. All ground floor rooms are wireless, as are the six meeting rooms, other suites have broadband.

