

Board rejects its inspector's view on glass link for Ardhú

By CLODAGH O'LEARY

LIMERICK City Council's decision to allow the building of a glass corridor between the old Ardhú House and the new Clarion Hotel Suites has been upheld by An Bord Pleanála.

The board went against its own inspector's recommendations in granting the permission.

Residents objected last December to the plan because the board had not yet made a decision on the second proposed development—a mixed residential/commercial venture.

Further information

had been requested by the board about this development and the proposed link between Ardhú House and the new hotel.

Objectors, including Patrick O'Callaghan and Rachel Dickinson of the North Circular Road Residents' Association, felt the Council's decision to grant permission was premature.

Deputy Michael Noonan also raised his concerns by writing to the board to ask if the Council had acted outside of their power in granting permission for the corridor.

But in his report, planning inspector Keith Sargeant stated the glass corridor was "ancillary" to the other two developments, and that the issue to be decided was the visu-

al impact of the link and its effect on the protected structure of Ardhú House.

He found that the corridor would be "seriously injurious to the visual amenities of the area and would adversely affect the architectural heritage".

Mr Sargeant recommended that the developers, Budelli Ltd, put forward a "revised proposal" within three months before the board would make a decision on the case.

But the Board decided not to uphold Mr Sargeant's recommendation.

Instead, they granted permission for the glass link with five conditions.

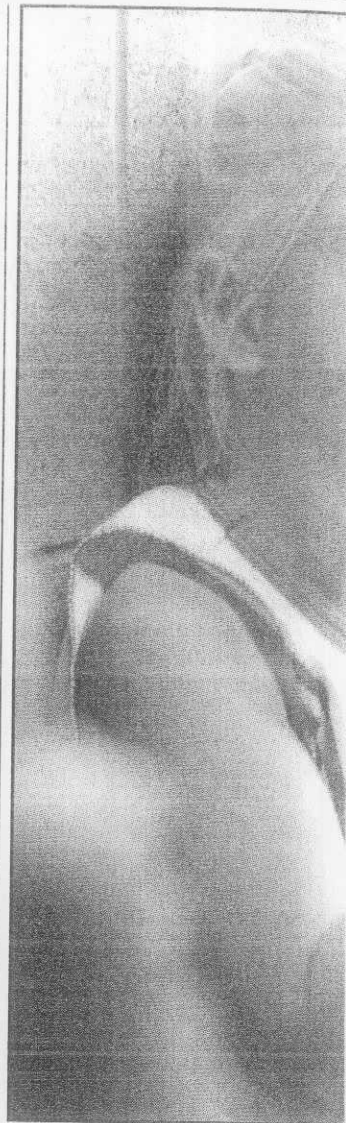
These included: work be carried out in accordance with further plans

received by the Council in November; an architect with specialised conservation expertise supervise all work on site, and that Budelli pay the Council a sum as outlined in the Planning and Development Act, 2000.

Residents reluctantly accepted the board's decision this week.

"While we are not very happy with it, we did think that the decision would be upheld. We would prefer that the link be built at the rear of Ardhú House, but the decision has been made by An Bord Pleanála and that is it," one resident said.

A spokesman for Budelli Ltd said: "We are satisfied that the board confirmed the decision by Limerick City Council."



Taking part in the St Vincent D

Univers

By ANNE SHERIDAN

LIMERICK children are getting into the holiday spirit at the St Vincent de Paul summer camp in the University of Limerick. Seven weeks of activities at the college were launched this week for over 400 children, aged seven to 13, from all areas of Limerick.

"The programme caters for children who are in need of a break over the long summer holidays, while also providing parents with a break," said Timmy Hennessy, of SVP.

The number of children participating in the summer camp is double the number of those who participated last year.

"We're delighted the programme is expanding each year and our ultimate aim is to have a holiday home in the Mid-West which would be similar to Sunshine

Sumi

"By

