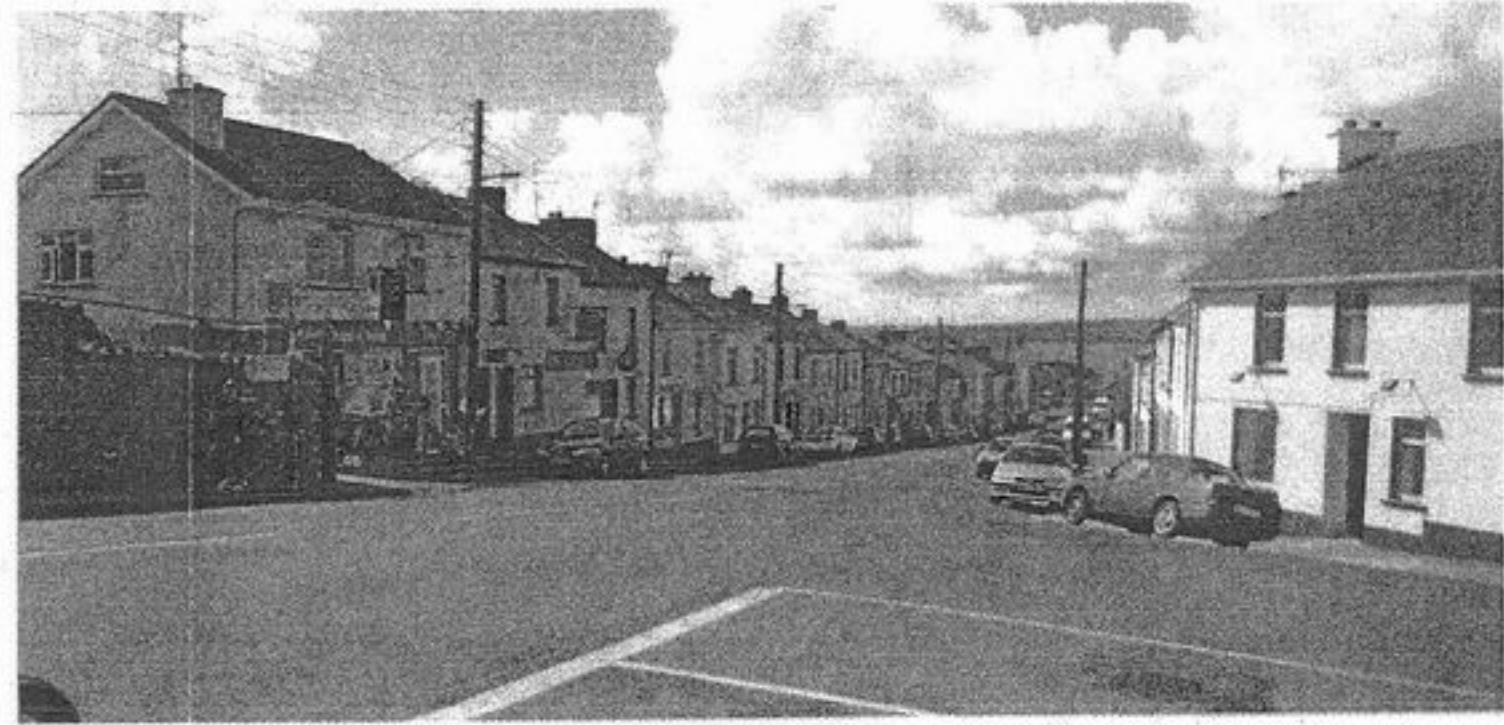


Main Street Kilfinane, left, as it is today and on the right almost fifty years ago

# Our County towns . . . and villages . . . then and now



The picture of Glin on the left is hardly recognisable from the current picture opposite. The black and white was taken in the 1940s by William Quinn, a Limerick city photographer while the picture left is a Limerick Leader picture



This is the village of Hospital in County Limerick. On the left as it is now and on the right, as it was in 1970. While the picture right was printed only recently it is interesting to note the changes that have taken place in a relatively short time