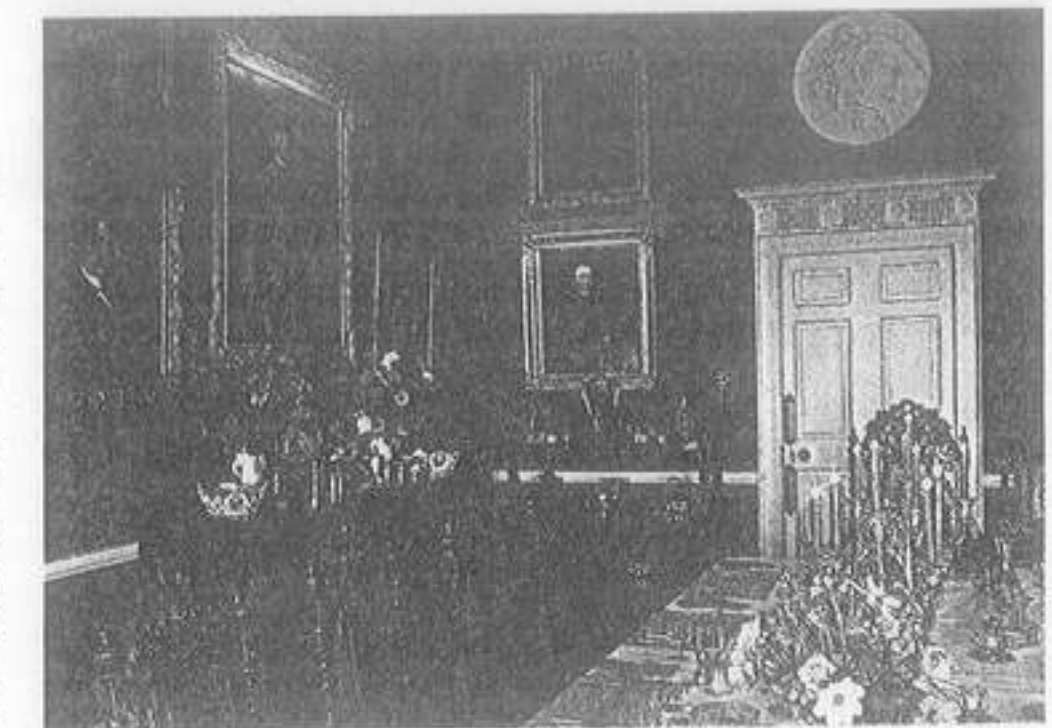


Make a castle your home

For anyone who has ever fantasized about living in a castle, or contemplated purchasing their own, Glin Castle provides the opportunity to take over an antique-filled historic gem, with its own impeccably trained staff, and enough suites of rooms, bathrooms, and dressing rooms to allow you to organize your own house-party. An account will be opened for you with the local tradesmen, and your only exertion will be to discuss and decide menus with the self-effacing and expertly-trained ladies who have been here since the 1920s. You may also draw on produce from the home farm and gardens, after due discussion with Tom the gardener. You may stay for a week or a month, or the whole summer, but occasionally rooms in the castle may be available for those just wanting a meal, bed, and breakfast. The owners, who live in a separate wing, are frequently away, though try if possible to greet arriving guests.

Glin Castle is the ancestral home of the Knight of Glin – 29th in succession, Harvard-educated art historian, Christie's fine arts representative in Ireland, author, expert on Irish decorative art – his wife Madame Fitz-Gerald, who also writes, and their three daughters. The title dates from the 1300s, the castle from the end of the 1700s, a fine Georgian house crenelated in the 1830s by the 25th Knight. You enter through the gatehouse in the village. A high wall encircles the estate, its farm, parklands, and immaculate gardens.

The entrance hall, with classical pillars, a polished floor, and family portraits, has a superb neoclassical ceiling. All the rooms house an exceptional collection



of Irish 18th-century walnut and mahogany furniture. Other fine ceilings, worthy of Adam, are in the stately drawing room, and in the bookcase-lined library. I ate in solitary splendor in the spacious dining room. The pâté and soup were exceptional, the steak tender and juicy, an apple tart melted in the mouth. Coffee was served in front of the fire in the elegant morning room. My well furnished and very comfortable bedroom had a sea view and was perfumed by a vase of sweet-scented roses from the garden.

Ambassadors, statesmen, famous musicians, or top executives accustomed to faultless service from excellent staff, and wanting to entertain privately, find this a far more civilized option than any hotel.

The splendid interiors include the drawing room (opposite, above), the Yellow Bedroom (opposite, below), and the dining room (above). Overleaf: the castle from the gardens, with the sea glimpsed behind the trees.

GLIN CASTLE, Glin, Co. Limerick. Tel. Glin (068) 34173. Bookings by arrangement through In the English Manner or Elegant Ireland (see p. 7). Telex No. Fax No. Owners The Knight of Glin and Madame Fitz-Gerald. Open All year. Rooms 4 suites: the Pink Rooms (1 double, 1 single, 1 bathroom); the Blue Rooms (2 double – 1 with four-poster – 1 single, 1 bathroom); the Yellow Rooms (1 double, 1 single, 1 bathroom); the Green Rooms (1 twin, 1 bathroom). Comfortable maximum: 8–10 people. Facilities Main hall, drawing room, library, morning room, dining room, 3 washrooms, kitchens, pantries, nursery, tennis court, gardens, 500-acre estate and dairy farm. Helicopter landing. Golf at Ballybunion, Lahinch, Fenit, Adare, by arrangement. Lunch Yes. Restrictions None. Terms Deluxe. The flat fee includes the services of a cook and 2 housekeepers, as well as utilities, but does not include the cost of food for the guests or staff. Usually let in 1–2

week periods. The more guests, the cheaper the individual cost – exceptionally expensive for 2, very good value indeed for 10. Dinner, bed, and breakfast may sometimes be available. Credit cards No. Getting there N7 to Limerick, N69 to Glin (150 miles, 4 hrs). Nearest airport Shannon (45 miles). Nearest rail station Limerick. Of local interest Adare; Bunratty Folk Park; Askeaton (ruins of friary); Tarbut to County Clare car ferry for Cliffs of Moher; Dingle Peninsula. Whole day expeditions Limerick; Ring of Kerry; Cashel; Killarney. Refreshments O'Shaughnessy's pub, Glin; Inn Between and Mustard Seed, Adare; Dirty Nellie's, MacCloskey's, Bunratty; Doyle's Seafood Bar, Dingle. Dining out Dromoland Castle, Newmarket-on-Fergus (see p. 53); Adare Manor, Adare (see p. 59); Cashel Palace, Cashel (see p. 49).

