

WATCHES

REPAIRED IN TWO WEEKS

Satisfaction Guaranteed.

Bee Moynihan & Co. Ltd.

2, O'CONNELL STREET,
LIMERICK

HALPIN'S TEA

Housing Schemes At Garryowen Will Cost £800,000

NOW that the Corporation has got a Compulsory Purchase Order in respect of certain property at Garryowen, it is expected that the housing development in this extensive area will be completed in a comparatively short time.

Already, some three hundred and thirty houses have been built at Garryowen, but under the third or final scheme this number will be increased to five hundred and fifty houses.

Approximately one hundred and twenty houses, in terrace style, are to be built along the frontage of the old Garryowen Road, from the vicinity of the Fair Green right down to the rear of St. John's Cathedral.

This development, apart altogether from its social values in relation to the provision of more houses, will have the effect of putting the finishing touches to one of the biggest building projects undertaken by the local authority.

WILL COMPLETE THE SCHEME

Building along the frontage of the old Garryowen Road—it runs at the rear of the Markets Field, parallel with Mulgrave Street—will add very considerably to the general lay-out plan of the whole scheme.

Until the road frontage—now a sort of no-man's-land and which had been used as a camping ground for itinerants—is closed up with a long row of neat houses, it will not be possible to appreciate the general plan for Garryowen. However, it may be stated in advance that this housing scheme will be an embellishment not only to this area, but to the city as a whole.

COST OF FULL DEVELOPMENT

The cost of the full development of Garryowen (John's Garden) will be in the region of £800,000. Two-thirds of this outlay comes from State funds, the balance being provided by the ratepayers. The rents will, of course, ease substantially the ratepayers' liability.

Thousands Take Part In Cratloe Pilgrimage

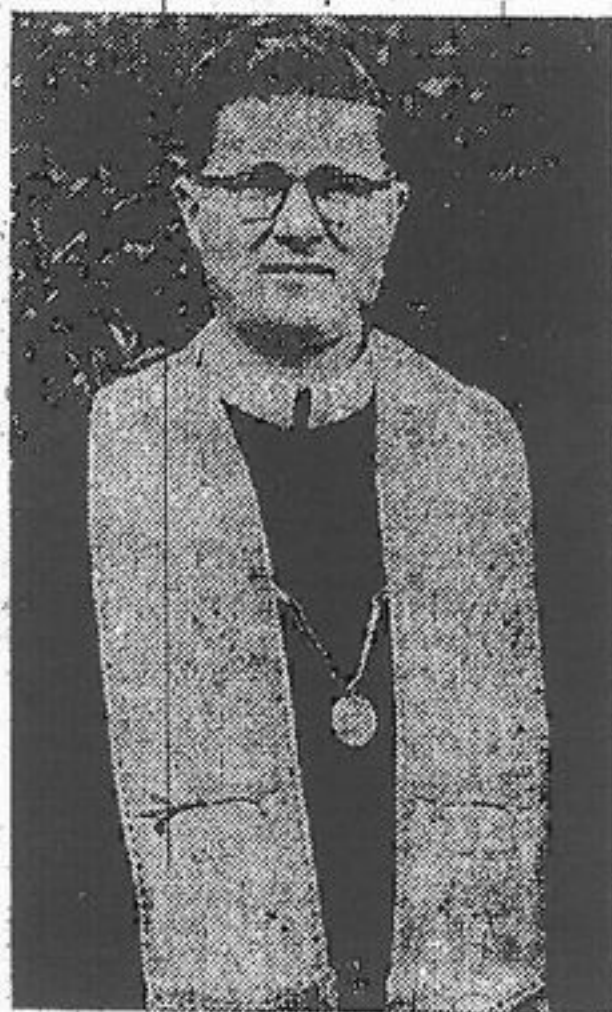
Several thousand people from Limerick and Clare took part yesterday in the annual pilgrimage to Cratloe Grotto. The procession to the grotto was, if anything, more impressive and colourful than in former years. Except for a shower

RECORD RETREATS FOR HOLY FAMILY

Nearly 7,000 members from the four divisions of the Holy Family Confraternity, Redemptorist Church, Limerick, received Holy Communion on the concluding morning of their annual Retreat.

The total number of Communicants and the attendance during the Retreat exercises, conducted by Rev. Father Kevin Redmond, C.S.S.R., and Rev. Father Kevin Long, C.S.S.R., were a record for the Confraternity.

Last night, the Fourth Division—St. Gerard's—catering specially for junior men, concluded its Retreat. Afterwards, the Limerick Pipe Band played a selection of Irish and Scottish airs outside the Redemptorist monastery.



Rev. Fr. J. Corbett, C.S.S.R.,
Arch-Confraternity Director.

Addressing the members of the band, Father Redmond said that the attendance of the bands at the annual retreats was as unique as the confraternity itself. He congratulated the pipe band on their fine playing and wished them every success in the future.

The ordinary weekly meetings of