

Progressive Trust has faith in ability to deliver

by Marie Hobbins
Preservation orders on several landmarks

UNDAUNTED by the current recession, director of Limerick Civic Trust, Denis Leonard, told members at their annual general meeting that 2008, which was the Trust's 25th anniversary, was a very productive, action-packed year of great variety.

"2008 was a fantastic year, not an easy one but a most rewarding year which didn't happen by accident or by itself - there was a lot of careful planning and execution of every detail to ensure

that a positive action trend was set to the best of everybody's abilities, resources and genuine effort throughout the year, but the big plus factor was the initiation of many projects which will happen in 2009 and beyond - there is a planned programme of 30 projects and I've no doubt this list will be added to with extra new projects during the year," he said.

Conceding that 2009 will not be without its difficulties, Mr Leonard said that while the downturn in the economy will be a big issue for the Trust's new executive board, in terms of carefully managing its available resources, he added:

"I believe that the Trust and its two limited com-

panies have performed very well in 2008, and have strengthened their resolve to face into a difficult year. We came through difficult times in the past and we will do so again.

"The Trust is a bigger and better organisation now than it was during the last recession in the 1980s," he said.

Projects undertaken in 2008 include: completion of a fifth section of the St John's Churchyard Wall; restoration of the Unthank Crypt, in association with Limerick City Council and FAS; Restoration (ongoing) of the Victorian style pavilion (which had been extensively vandalised) in O'Brien Park; Commencement of restoration work in Killeely Cemetery, following an

archaeological inspection. There are three further projects in the cemetery which are planned: Plans for the resurfacing of the O'Connell Monument site and reinstatement of the replica lamps.

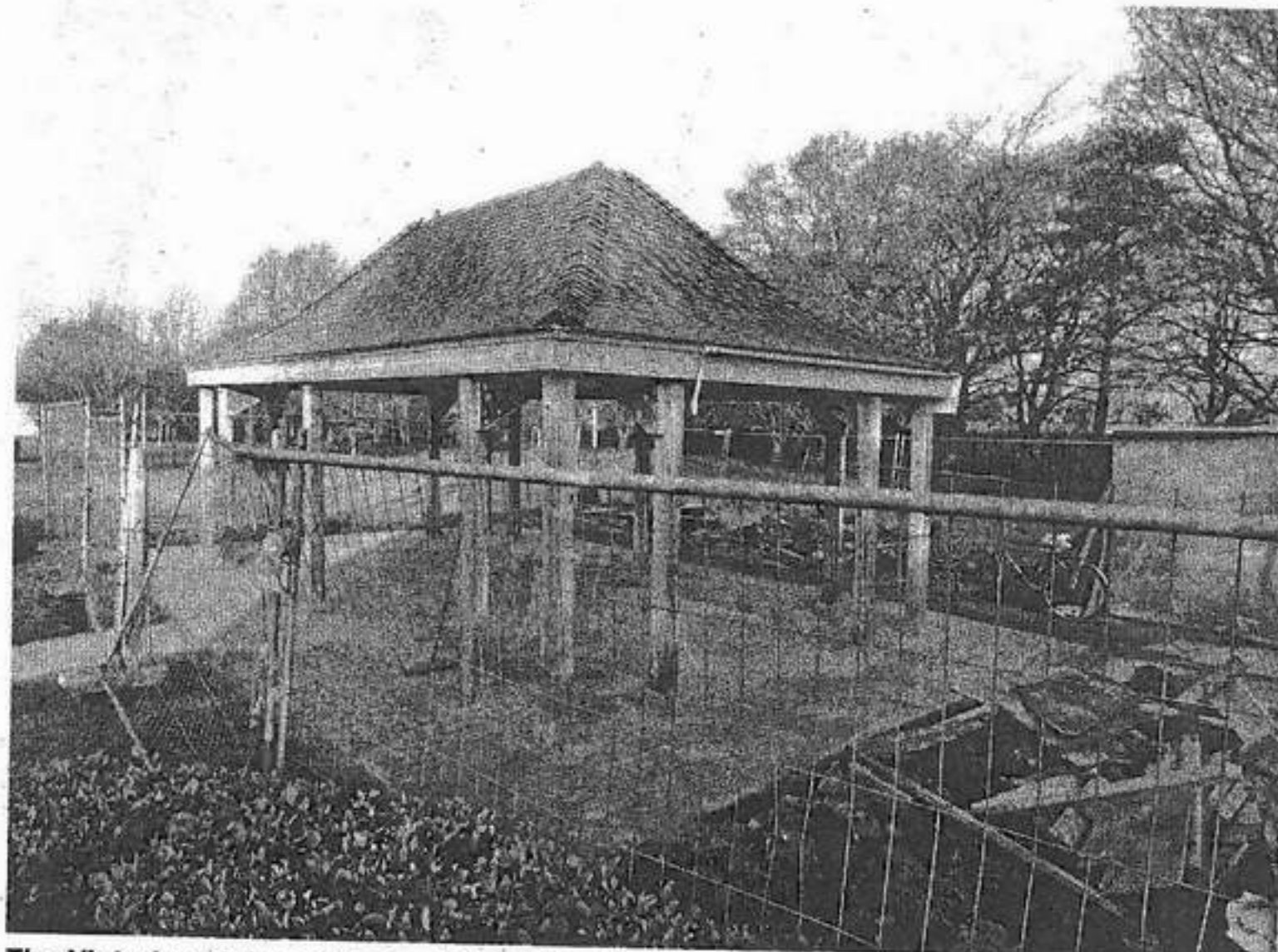
With reference to 4, Patrick Street - former home of the internationally acclaimed Limerick soprano, Catherine Hayes, which is earmarked for restoration, Mr Leonard said:

"All we can do is be patient until the planning process is completed and the development commences - we are powerless to do anything at this stage".

As regards the Limerick Memorial, he voiced his dissatisfaction about the finish of the memorial, adding: "I have set a target of having the monument issue resolved before the year is out" and he said that the Trust has done as much as possible within its resources to refurbish the Park Canal pathways and continues to carry out maintenance work along the canal.

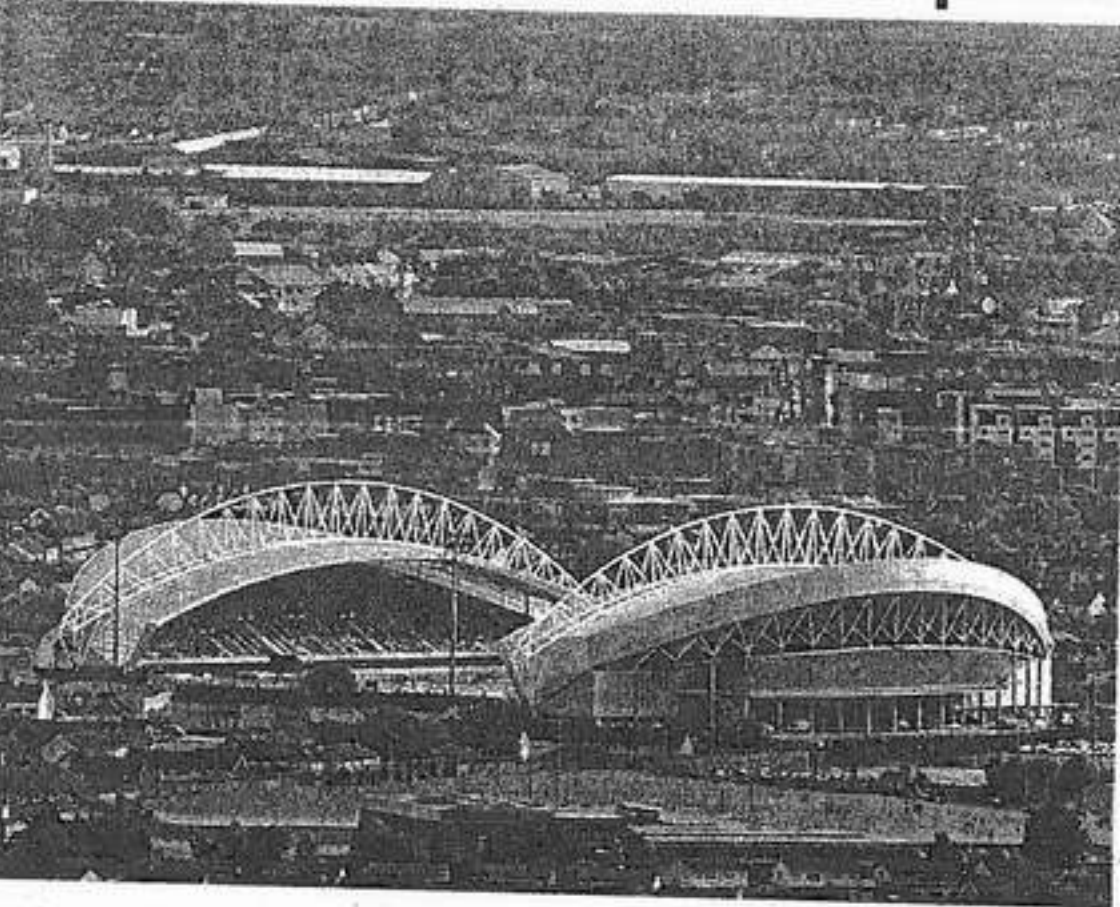
With reference to the city's Gas Meter, he said: "I'm trying to identify a suitably prominent site along the riverside where the meter can be located. This is a substantial item and is designed like a Grecian Temple - it's the only one of its kind in the country".

Following vandalism of the Oarsman Monument



The Victorian style pavilion, which had been extensively vandalised, in O'Brien Park:

Just the ticket for Shannon Development



Shannon Development have invested in a corporate box at Thomond Park

IT has emerged that Shannon Development have availed of a corporate box at Thomond Park at a cost of euro 20,000 annually, over a five-year period.

A spokesperson for Shannon Development said they viewed the investment as a very important part of what is taking place in Limerick.

They had access to the corporate box, the spokesperson continued, as part of their marketing strategy which allowed them market certain products to a potentially very wide audience of industrialists and tourism interests.

There are 20 private corporate boxes at the stadium, leased on an annual basis.

Limerick has already benefited enormously from the recently developed Thomond Park, now host to a wide range of cultural events, weddings, receptions, concerts, etc.

Elton John and Rod Stewart are to play at the venue this summer, and negotiations are understood to be in train for other top acts.

The ground capacity is 26,000.

Thomond Park has certainly projected Limerick and the region in a very positive light.

in the Athlunkard Boat Club, the Trust arranged for its repair and cost and had the entrance to the club cleaned.

Work on the Exchange Wall on Nicholas Street, will commence later this year, following the allocation of a conservation grant of 6,000 euro.

Preservation projects include: The Park Kiosk, which was refurbished by the Trust, and which included the in-fill copy

tion work on one side of he wall and has started work on the side facing Mary Street: Richard Russell Fountain: with the assistance of a special grant from the council a low decorative railing is now due to be erected around the fountain to prevent it being used as an assembly point: The Abbey Wall: one of the oldest structures in the city and in bad state, the Trust has completed the conserva-

People's Park is in a bad shape, particularly the dome, of which 75 per cent of its original features are missing - the fountain now needs specialist conservation to reinstate it and we will fund 50 per cent of the costs and are asking the council to fund the balance".

tion work on one side of he wall and has started work on the side facing Mary Street: Richard Russell Fountain: with the assistance of a special grant from the council a low decorative railing is now due to be erected around the fountain to prevent it being used as an assembly point: The Abbey Wall: one of the oldest structures in the city and in bad state, the Trust has completed the conserva-

EIMARS COMMUNION WEAR

Half mile past Larkins Cross on main Corbally Road

Opposite Corbally United Football Grounds

We have the largest selection of Jellytots Communion Dresses.

Sizes range from 6yrs to 14yrs

Also with matching Jackets, Bags, Crowns, Veils, Socks & Shoes.

Jellytots dresses are exclusive to Eimars

Opening hours:
 Mon - Sat 10:00am - 5:30pm
 Contact Margie Murphy 061 340034

Enjoy **Badminton** with the **Concord Club**

Wednesday 8-10pm
 At Villiers School, North Circular Road
 New Members Welcome
 Phone 418928
 Over 18's only

Chiropractic X-Ray Centre

- X-Rays
- Chiropractic Treatment
- Acupuncture
- Sports Injuries
- Paediatrics & Pregnancy
- Detox
- Orthotics

BUPA VHI VIVAS HSA
Chiropractic X-Ray Centre
 Unit 14, Racefield, Fr. Russell Road, Dooradoyle.
 Tel: (061) 305526

Adelaide Studio

Ashbourne Ave., S.C. Rd., Limerick.

Afterschool Art for Children aged 5-11yrs

Commencing Tuesday 13th Jan

A variety of different materials explored and supplied to children in the studio

Contact Geraldine Dennehy
086-8222184