

LIMERICK CIVIC TRUST

The Trust, which was founded in 1983, has as its headquarters the newly restored Palace of the Church of Ireland Bishops. Known simply as the Bishop's Palace, the building dates back to the seventeenth century and is thought to be the oldest standing domestic dwelling in the city.



Billy Peacock

The policy of the trust is to carry out one major

project along with a number of environmental type projects at key locations. During the past seven years, forty three projects have been completed.

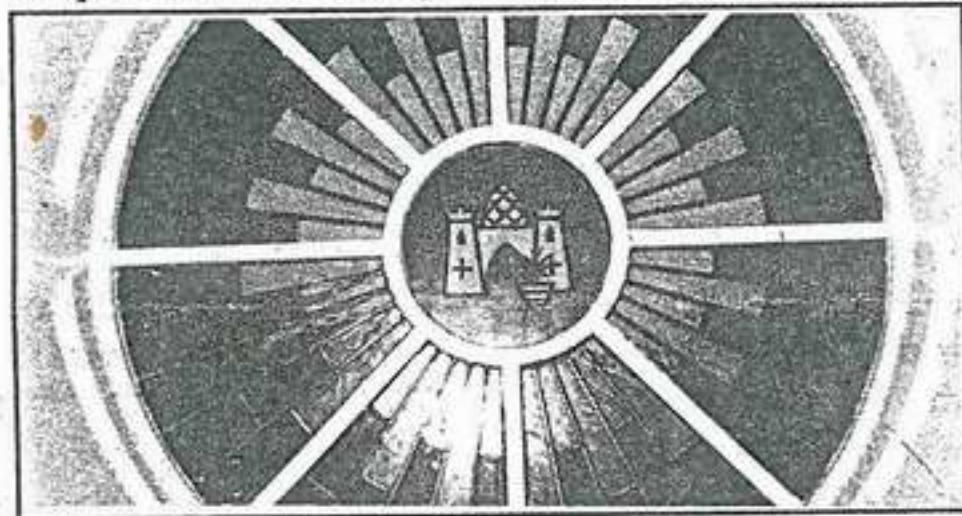


Denis Leonard

Currently, the major work in hand is the restoration of the grandeur of St. Mary's Cathedral.

This year has been a most important year in the

history of Limerick and the Trust's activities were planned to support the Corporation and Treaty



Bishop's Palace: Limerick Civic Trust

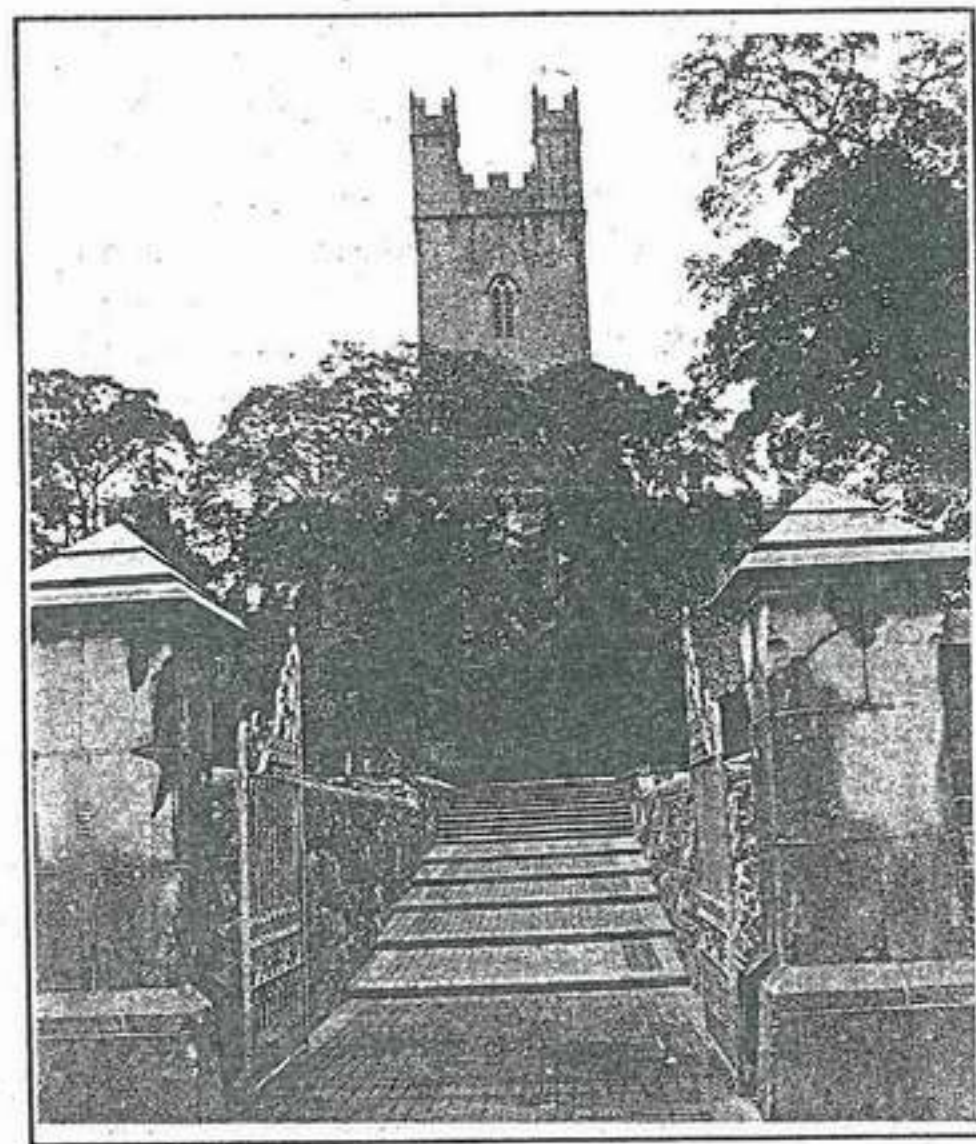
300 in their admirable efforts to promote Limerick at its best.

Three viewing decks were installed at Georges Quay and the Limerick Memorial was repaved. A

new pathway was provided at Shannon Rowing Club Quay and a roadside landscaped area

was developed at Church Street.

'Heritage Walking Trail' and a 'Trail of Three Limericks' are the titles of their most recent publications.



New entrance to St. Mary's Cathedral