

Police Investigate Death of Kilmallock

Woman

THE Garda are investigating the death of Mrs. Joan O'Rourke (35), Central Hotel, Kilmallock, mother of three children, whose battered body was discovered at the foot of a stairs leading to the kitchen of the hotel between six and seven o'clock this morning.



THE LATE MRS. O'ROURKE.

The discovery was made by the dead woman's 15-year-old son, James, who immediately summoned spiritual and medical aid. The Garda were then notified and Superintendent Rabbitte, Bruff, informed headquarters, Limerick.

CHIEF SUPERINTENDENT AND DETECTIVES.

Chief Supt. E. J. Reynolds and a number of detectives from Limerick were quickly on the scene. The hotel, following their arrival, was sealed off. Guests staying in the hotel were asked to find alternative accommodation.

STATE PATHOLOGIST.

Later, reporters were told that the State Pathologist, Dr. Maurice Hickey, and members of the Technical Bureau, Garda Siochana, Dublin, had been called in to assist the local Gardai in their investigations.

WAS VERY POPULAR.

The late Mrs. O'Rourke, fair-haired and fresh complexioned, was very popular locally.

With her husband, Mr. Thomas (Tobin) O'Rourke (58), she carried on the business of the Central Hotel. They were married over 16 years ago, there being three children, James (15), Ita (9) and Marian (3½).

NATIVE OF KERRY.

Mrs. O'Rourke was a native of Killarney and worked in a hotel there before her marriage to Mr. O'Rourke. Her maiden name was Joan Healy. The Central Hotel is situated at the corner of Emmet Street and Sarsfield Street.

Foul play is suspected by the Gardai and a minute inspection of the hotel was carried out by members of the Technical Bureau. A post mortem on the body will be conducted by the State Pathologist later this evening.

EXTENSIVE BRUISES.

It is stated that extensive bruises were found on the face and body, which was partly clothed in night attire.

The tragedy has profoundly shocked Kilmallock and huddled groups stood around at street corners discussing the occurrence throughout the morning.

Mr. O'Rourke, who owns a big farm in addition to the hotel, was a Lieutenant in the Irish Army during the emergency. He is a member of a well-known Kilmallock family.

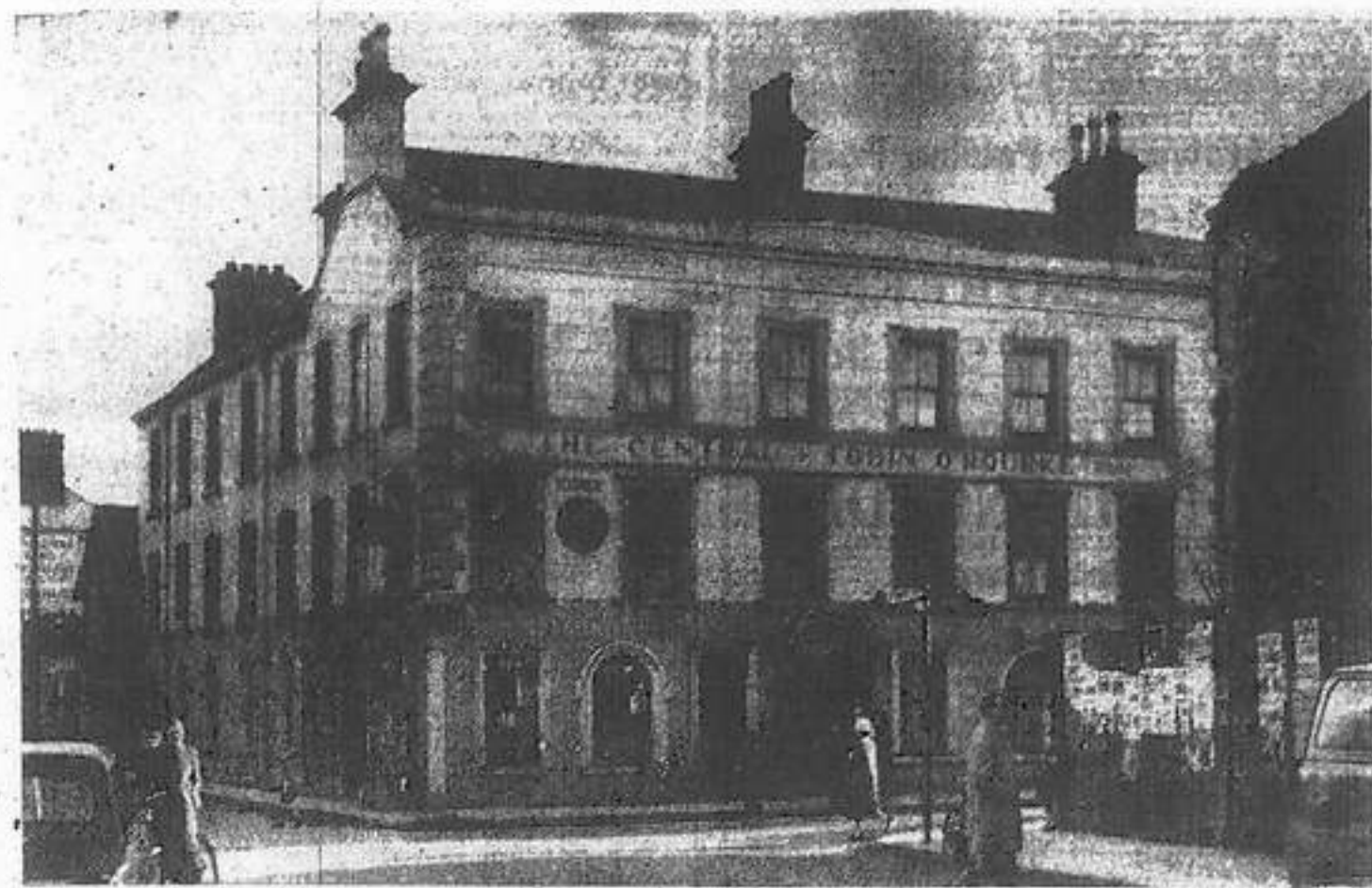
INQUEST TO BE HELD.

Arrangements are being made to hold an inquest by Dr. J. P. Clery, Coroner for East Limerick, this evening.

NO DEVELOPMENTS.

No fresh developments were reported from Kilmallock, and none is expected until the State Pathologist has completed his post mortem.

WHERE BODY OF DECEASED WAS FOUND



The Central Hotel, Kilmallock, in the kitchen of which the battered body of Mrs. Joan O'Rourke was found this morning.

MELO-DRAMA PRESENTED BY COLLEGE PLAYERS

THE presentation of Dion Boucicault's "Arrah-na-Pogue" by the College Players at the Playhouse this week is a break from the usual type of production which one associates with this talented group.

The success of the production can be gauged from the large audiences which have attended the play since the opening night and the numerous curtains the players had to take at the conclusion of each presentation.

The plot centres around a wedding in Wicklow at the end of the '88 rebellion and embraces twelve scenes which call for quick changing. The technical difficulties involved did not always lend themselves to the smooth change over, but these minor faults were offset by the colourful scenes depicted and in particular the lovely setting of Glendalough by moonlight. The dancing and singing items also make the production unusual and add a gay and lively note to what can best be described as a melodrama of the old vintage class.

ROLES ADMIRABLY FILLED.

Michael Cahill and Marie O'Driscoll, as Sean the Post and Arrah-na-Pogue respectively, play the lead roles in a very competent fashion, the latter enhancing a reputation that grows with each appearance. Tony Lynch, as Michael Peeny, a process server, police spy, etc., had a difficult role, but acted it throughout without a hitch. Biddy McGrath gave an excellent performance as Fanny Power and was ably supported by Brendan Harty as the polished Colonel O'Grady.

The part of the rebel leader, Beamish McCaul, played by Michael Russell again clearly demonstrates the versatility of this young actor. He gave a very satisfying interpretation.

Other parts were ably played by Eddie Galvin, Liam Bourke, Tony Flannery and Mary Cunnane. Jimmy O'Shea deserves special

Housing Tenders In Limerick Are "Unduly High," Says Minister

THE cost of housing in Limerick is too high. This is the opinion of the Minister for Local Government, who has directed the Corporation, for the second time, to reduce expenditure.

In a letter to the City Manager (a copy of which has been received by Ald. D. B. O'Malley, T.D.) the Secretary to the Department states:—"I am directed by the Minister for Local Government to state that he has given careful consideration to the representations in the matter which were made by members of the deputation recently received by him at Leinster House. The Minister adheres to the view expressed in the Department's letter, that the tenders proposed for acceptance by the Corporation are unduly high, and in particular, that the superstructure costs on which they are based are excessive by reference to current costs for schemes being carried out in other areas."

THE MARGIN OF SAVING.

Comparative building costs for Cork, Waterford, Tralee and Drogheda having been quoted, the letter continued:—

"Allowing for disparities in floor areas it is quite evident from the figures quoted that there is a considerable margin of saving possible, and there seems to be no reason why the Limerick Corporation should not achieve savings of the order of £200-£250 per house in the event of the substitution of a revised basic house design for their future schemes. The Minister wishes to make it quite clear to

the Corporation that he will not in future approve of the acceptance of tenders involving costs so widely at variance with the normal range of building prices obtaining in other areas. In view, however, of the strong representations made by the members of the deputation as to the need for preserving the continuity of building operations in Limerick City the Minister has decided as an exceptional measure to approve of the acceptance of Messrs. McInerney's tender in the sum of £75,450 7s. 7d. for the erection of 47 houses at Well Field.

"WITH EXTREME RELUCTANCE"

"I am to point out, however, that it is with extreme reluctance that the Minister has agreed to this course. He is not prepared to alter his previous decision in regard to the scheme at Upper Carey's Road and immediate arrangements should be made to re-design this scheme on the lines indicated in this Department's letter of 13th December, 1953. The technical and administrative officers of the Department will be available at any time in the near future for discussions relating to the new plans and the Minister wishes to assure the Corporation that every effort will be made at the Department's end to facilitate the preparation of suitable plans."

THE BISHOP AND LIMERICK PEOPLE IN LONDON

The Limerick Association in London has in the front page of its special Christmas "Newletter," with a copy of which we have been favoured, an excellent picture of the most Rev. Dr. Murphy, Bishop of Limerick, who so kindly consented to be patron of the Association.

Underneath the picture is an interesting message from his Lordship "to our Limerick friends in London."

THE MESSAGE

Here is the Bishop's message:— On behalf of the Clergy and people of Limerick I send our best wishes to our fellow Limerick men and women in London for a very happy Christmas and New Year. You shall be in our prayers, as I hope you shall be in yours, and though physically separated, we shall, please God, remain always bound by the spiritual ties of Faith, Motherland and Native Place. I send you my Episcopal Blessing, and I pray God to shed on you His bountiful Graces and favours during this Christmas Season and the Coming year.

G. H. MURPHY, Bishop of Limerick. DEDICATED TO HIS LORDSHIP

The front page of the "Newletter" has the following note addressed to each member of the Association:—

We take great pleasure in dedicating this, our third Christmas Number, to our revered patron, Most Rev. Dr. H. Murphy, Bishop of Limerick. Since his appointment he has shown that his interest in our welfare is as keen as that shown by his predecessor from the foundation of the Association till his untimely death. As a tribute to our Patron we have given much time, thought and effort to the production of our front-piece. I hope you like it. Each year as Christmas comes round, our thoughts automatically