

Down by the riverside

Corbally

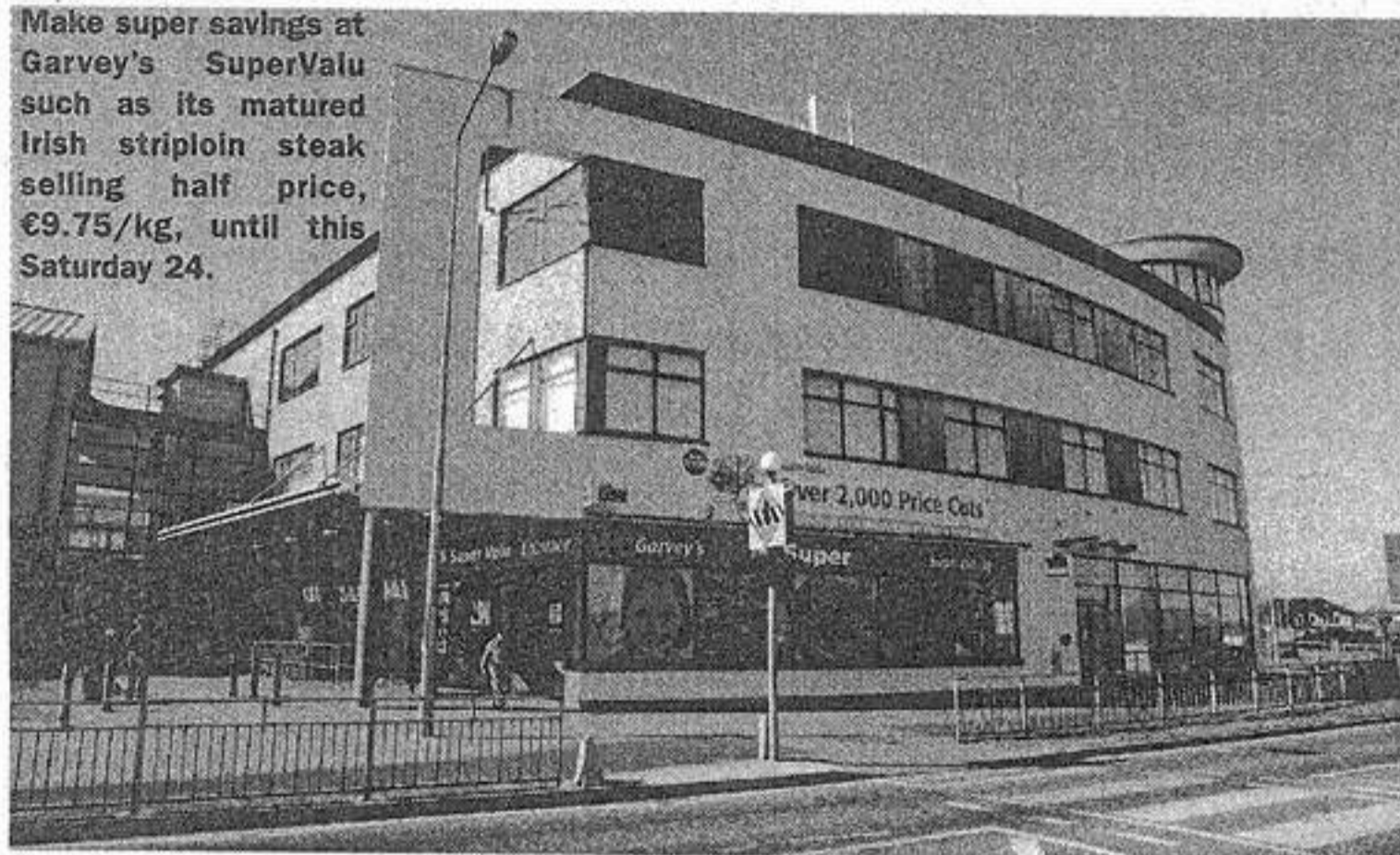


CORBALLY straddles the two parishes of St Mary's and St Nicholas and the two counties of Limerick and Clare. Based on either side of the Abbey River, the commercial development of the area has been served by a series of retail centres - Grove Island, Corbally Centre, Westbury Shopping Centre and Applegreen.

They provide shops and services to a community that has a long-standing history in GAA, soccer, St Mary's Fife Band, the Abbey fishermen, several schools and diocesan services such as ACCORD at St Munchin's College. The hinterland is primarily residential.

Attractive new estates placed off the Mill Road and the Clare exit to Parteen and Clonlara settled in well with older addresses such as Park and Irish Estates.

Make super savings at Garvey's SuperValu such as its matured Irish striploin steak selling half price, €9.75/kg, until this Saturday 24.



Corbally Centre success

FORMERLY the site of the Ark Tavern, Corbally Centre is a 20,000 sq ft complex of retail and services spaced over two stories. The location is outstanding for traders located here, based midway between the city centre and the many outlying residential estates that extend into Co Clare. Corbally Centre is dominated by a Chinese restaurant and medical services on the first floor. The street level shops and services, with parking, include O'Sullivan's Pharmacy and beauty salon, hairdresser, off-licence, bank and pub.

Success for the traders has been assured by careful management, joint interest and the drive-in facility, as well as each business complementing and not competing with the other.

The nearby service station provides a motoring fuel forecourt, newsagent and grocers.

St Mary's Church and Cathedral

St Mary's Church RC, Athlunkard, was built in 1932 on the site of an earlier chapel, also called St Mary's. It's dedicated to our Lady of the Assumption.

St Mary's parish is probably the oldest of the five original parishes of Limerick City. It was in existence before the Synod of Rathbrassill in 1111 AD. It was in this year that the then parochial Church of St Mary's was raised to the level of a cathedral by the Bishop of Limerick, Gilbert.

When Brian Hodkinson carried out excavations on St Mary's Cathedral, he discovered pottery, tiles and jewellery that dated from the latter half of the 13th century under the nave.

The parish records of St Mary's date from January 1745 when Fr James White who was a curate in the parish from 1738 until his death in 1768 began to write the details of the marriages and baptisms in

Latin.

Nowadays, the parish contains King John's Island and includes a part of Corbally. It was divided in 1991 when Bishop Jeremiah Newman created the parish of St Nicholas' to accommodate the rising population of Corbally as the city spread outwards. The population of St Mary's parish is around 6,000.

With the coming of the Reformation, St Mary's Cathedral became the property of the Church of Ireland. Today, the Roman Catholic cathedral is located in St John's Parish.

St Munchin's College

Limerick Diocesan College, under the patronage

of St Munchin, was founded in 1796 by the most Rev. John Young, Bishop of Limerick.

Known today as St Munchin's College, it was 1960 when this venerable institution was established in its present identity by the then Bishop of Limerick, Most Rev. Henry Murphy.

The inscription on the foundation stone of the college tells of its tiered history. St Munchin's College is today the Diocesan College of Limerick, a diocese established at the Synod of Rathbrassill in the memorable year of 1111. St Munchin's was a preparatory seminary for Catholic Clergy before they went on to Maynooth and the college bears its establishment history proudly.



Corbally Centre, Corbally Road, Limerick

O'Sullivan's Pharmacy located in the Corbally Centre, Corbally Road, pride ourselves on our customer care. We provide free car parking, excellent opening hours, passport/id photography, mobile phone top-ups, constant in-store promotions to provide the best value for our customers and professional medical advice from our highly trained staff in a welcoming, friendly atmosphere.

We also have a beauty salon in-store where our Beauty therapists like to provide the best professional advice on skincare in Yonka and Decleor products. Our therapists also offer a wide range of treatments including facials, specialized waxing, body wraps, sunbed etc. There are monthly promotions on salon treatments so why not call to our store today and meet us or you can contact us at 061-349444.

Opening Hours:

Monday - Friday 9am-7pm, Saturday 9.30am - 5.30pm

Corbally	061 - 349444	O'Connell Street	061 - 405509
Sarsfield Street	061 - 413808	Edward Street	061 - 440766
O'Connell Avenue	061 - 315010		

MISE

BEAUTY THERAPY

Westbury Centre, Corbally. Tel: 061 348438

SENSATIONAL SUMMER OFFERS

Full body tan, File & Polish
Hands & Feet €50

Turbo Sunbed €40 - 80 mins

1/2 leg, Bikini & Under Arm Wax,
Eyelash Tint, Eyebrow Shape,
Toes filed and polished €55

Express Facial €30

Offers End 31st July 2010

Please phone for
details on other offers

OPENING TIMES:

Mon to Wed 10am - 6pm

Thurs & Fri 10am - 8.30pm, Sat 9am - 3pm



FREE LUNCH

Buy 1
Panini

Get 1

FREE

Present this voucher
to avail of offer

Grove Island
Corbally Limerick
061 348880

Offer ends Sat 22nd May 2010