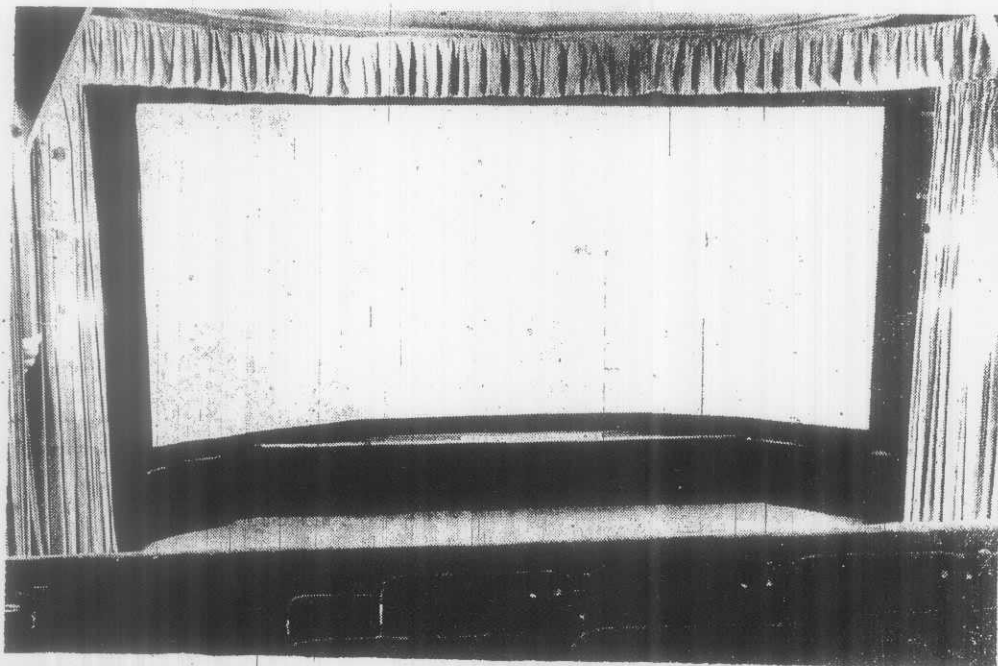


ORAMIC CARLTON

R OPENS THIS SUNDAY

45



THE GIANT panoramic screen at the Carlton is one of the largest in Ireland. This mammoth forty-foot spread has now been incorporated into the cinema's new name. Henceforth it will be known as the Carlton Panoramic.

And to celebrate the official opening of the cinema—all the work commenced on December 4 has been completed—there will be a gala performance on Sunday next of Paramount's new world record-breaker "The Godfather."

- The criminal activities of the Mafia in the American underworld have been depicted before in films but never so uncompromisingly as in the eagerly-awaited "The Godfather" which opens for a short season at the Carlton Panoramic on Sunday.

- This is a film in which the horror of its violence will probably stun a fairly high proportion of those who will see it.

- "The Godfather" is not just an unpleasant experience—it is a nightmare as you watch inhuman monsters cold bloodedly liquidate rivals in the interests of "business"—business being the maintenance or extension of their strangleholds of their many rackets and their control over police, politicians and even the judiciary.

- The production marks one of the high points

of Marlon Brando's career as an actor. His portrayal of the title role, as head of New York's most powerful "family" is a study in a deceptive gentleness and benevolent reasonableness.

- Brando's casting as the ageing, throaty Don is probably the film's greatest triumph, but he is surrounded by an exceptionally well-chosen and brilliant cast, notably Al Pacino, who "graduates" from being an innocent young U.S. army officer through the various stages of thuggery until he eventually becomes the new "Godfather".

- Also starred are James Caan and Richard Conte.

- The film represents a remarkable achievement for director Francis Ford Coppola, who, with Mario Puzo, was also co-writer of the screenplay.

- The Carlton Panoramic has been entirely re-seated with jumbo armchairs, while a new sound system gives greater clarity, aided by the lavish drapes which hang from ceiling to floor level.

- The huge curtains conceal the huge screen which looks extremely well when Panavision films are being shown.

- The foyer has been modernised and re-decorated and a striking feature is the array of chandeliers. These give an air of luxury to the whole cinema which has undergone a complete transformation. It now ranks among the select cinemas outside of Dublin.

—E.C.

Carlton Panoramic

• The ONLY Cinema in Ireland with JUMBO ARMCHAIR SEATING!



● The Jumbo Seats in the Balcony



NOW SHOWING (note Walt Disney's Double)

SLEEPING

Extra: **TREASUR**

Feature: 3.15, 6.17, 9.19.

● **SUNDAY NEXT** (O D)
At 2.45, 7.50.

Alfred Hitchcock

BARRY FOSTER

ALEC MCCO

FREN

Added Attraction: Special

THE LIGHT OF O'

From Monday

Feature: 2.50, 5.40, 8.40.

● ENJOY A DRINK IN 'ON THE GROUND' FLA

SAVOY C

★ IN CONCE

THIN LI

Supporting Gr

CROMW

ON FRIDAY, JA

At 8.00 p.m.

Adm. 75p, 65p and 55p -

Savoy, Limerick -

At 3.00 p.m.

La Scala Milan Colo

"CAVALLERIA RUSTICANA"

Conductor: Herbert v

Now booking at Savoy - 50p and 40p

CITY THEATRE

VISUAL ARTS CU

MATINEE SUNDAY, 3 p.m.



Tom & Pas

Fabulous new

CHRISTMAS



Fea the inte

OW T

Ow Ean

NOT GEL Parl

★ the

This Week's Guest

DAVID BEG

—Next Week's Guest: Sensational E