

neide

ALT

inn daoine  
mai do'n Oig  
ailte roimh  
Gaeilge. Ní  
onn againn  
athair ach  
halist agas  
ge ag teas  
ein ach dar  
cleachtadh  
uim freisin.  
uithneamh  
hi agus an  
s bres le  
i. Le con-  
u ag teacht  
ion cultuir  
cheile agus  
rad sin ní  
o thaobh  
ultuir de.  
PADRAIG:  
in fagtha  
draig agus  
olas faoin  
Le roinnt  
as ní raibh  
sa cathair  
i mbiliana  
seal agus  
in Ostan  
ar 8.30 In.  
ghaidh go  
idin. Flor-  
n agus be  
ulla bheith  
g brath ar  
fad agus  
du muna  
athair ag  
uoin faillte  
fidh gach  
h as an  
ighaireach  
i tracht  
ci agus an  
nte anois  
i Realtóir  
i no ag an

ris tugtar  
le suim i  
na tire  
cuig Halla  
10.30 Luan  
fear Cead  
Bionn rud  
a shasadh  
nh meith  
idai mar  
ht, ceist-  
in sleamh-  
go cheile  
gliondar  
a dhein  
aite mar

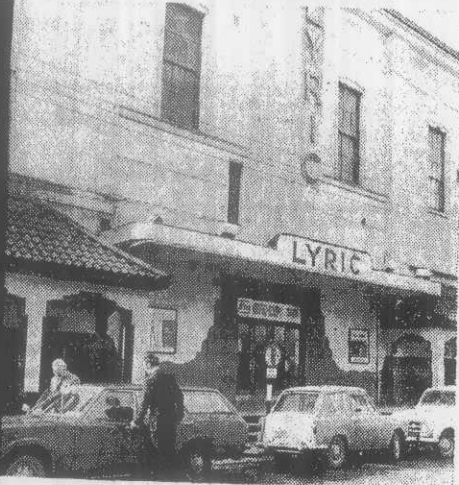
A D'EN  
an rud e  
againn le  
en Realt  
le deanaí  
uithneamh  
amar cuig  
a Spainn-  
Níl cur  
sil ar an  
romhainn  
aobh go  
is an cead



ROYAL: One escape locked.



SAVOY: One escape locked.



LYRIC: One escape locked.

OUR MONEY HAS  
EARNING POWER...  
PUT IT TO WORK!

EST WITH COMPLETE SECUR

# Just how safe are

LEADER PROBE BY BILLY KELLY

**WHEN YOU** attend the cinema do you ever think about your chances of getting out in the event of a fire?

After visiting the five Limerick cinemas I am in agreement with the acting Fire Chief, Mr. Thady McInerney, that there are adequate precautions taken to prevent a fire disaster in all of the cinemas.

But, while they have enough exits, no cinema had all the exits open and properly lit exit signs—as required by the Fire Chief—when I called.

There are no definite laws as to the fire precautions which must be taken. It is the recommendations of the Fire Chief which must be met.

## Exits

He says that no exits or passage ways may be blocked. The doors must not be locked and the exits must be properly marked.

Mr. McInerney visits the cinemas every so often to see that everything is in order. In the Savoy cinema, during one of my visits, one escape was locked, with the exit light still working.

Even though this escape was not needed and those attending the cinema would have been able to get out with the greatest of ease in the event of a fire, the requirements do include that no exit may be locked.

On a second visit all exits were in perfect order.

Mr. John Likely, general manager, said he would accept that the exit mentioned was locked but that it should not have been.

He expressed confidence that the Savoy was perfectly safe for patrons.

## Checked

He told me how each day all the escapes were checked and the inspection was entered in a fire book—and signed by the usher.

Each week the manager checks the escapes and signs the book himself.

Mr. Jim Larkin, manager of the Lyric Cinema, told me that their emergency exits were definitely open during performances.

He said: "I am ultra-conscious about fire precautions."

He stressed that he was always very strict that these were fully operational.

However, on one occasion when I visited the cinema one escape was locked.

An examination of the door showed a padlock and chain which would prevent it being opened. This was during a performance.

Later, Mr. Larkin denied this absolutely.

He said the door in question had been broken by vandals and so before the start of the film had to be kept locked—but was always open until after the final show.

## Disagreed

Overall the cinema was well equipped to deal with a fire.

Mr. Larkin did not agree that an escape had ever been locked and said that at all times the public was perfectly safe in the Lyric.

The Grand Central and Carlton did not have the same number of fire escapes as the other two mentioned.

But the provisions were enough and the acting Fire Chief said all the Limerick cinemas had proper emergency exit facilities.

All the exits in these houses were open but little care was given to lighting the exit signs.

The Royal was also careless

# Limerick's 5 cinemas?

PHOTOGRAPHS: JOHN F. WRIGHT

In the lighting of the exit signs downstairs.

One day, shortly after a show began, the downstairs emergency exit was locked.

This was because the person responsible for opening it had not got around to it.

## Slips

All cinema managements were very concerned about

their fire precautions.

The slips, in conforming to the specifications of the Fire Chief, were explainable (or denied).

In each cinema there was somebody whose job it was to see that the exits were open for performances.

But each cinema was at some stage in some way not fully carrying out the acting Fire Chief's recommendations.



CARLTON: Unlit exit signs.



GRAND CENTRAL: Unlit exit signs.

So  
get  
we

MR.  
lock, w  
as a so  
on his fl  
mallock  
Introdu  
M. Pov  
said the  
pleasure  
on behal  
welcome  
William  
was con  
Lee wou  
steps of  
and be  
Court. E  
years of  
District  
Maguire.  
was a st  
sollicitor  
before hi  
was appe  
he had r  
tion, and  
will fron  
hearty w  
Supt.  
D.C.C., a  
come to  
suitably

Sy

At a i  
Western  
vice-chair  
proposed  
to Dr. C.  
death of  
Dr. Nash  
wife. The  
bers pres  
selves wi  
pathy.

IF

C  
n

YES  
to C  
Ope  
Gua  
whol

BR  
SH  
CO  
CO  
SU  
(EX)  
EU  
(2 F)  
ST

Is your name Veronica?