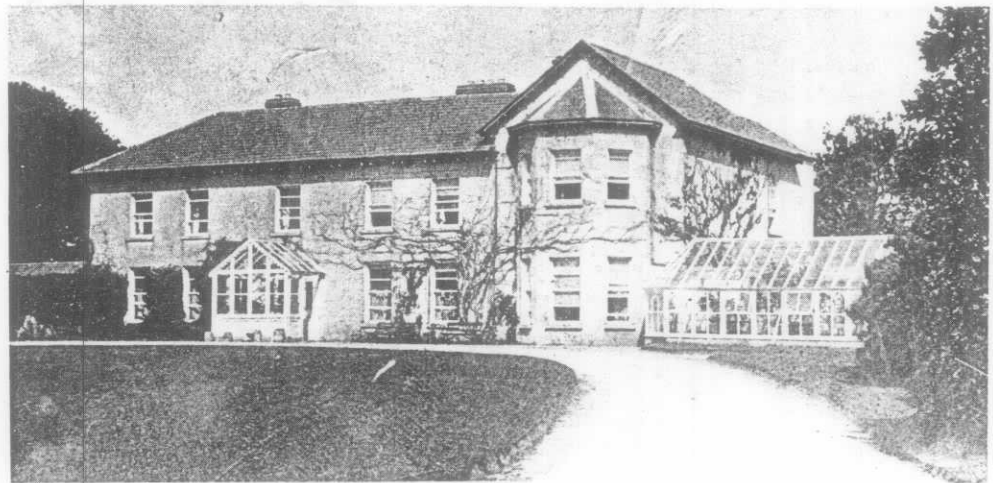


1120.

An early twentieth century photograph of Corbally House, Quin, as it was. The bay windowed additional part to the right of the house and the adjoining conservatory have since been demolished, leaving only the original five-bay residence. By courtesy of the late Geraldine Henn.



The stepped rear of Castlepark, Limerick, with its fascinating conglomeration of buildings including the small two-bay return (centre right) and various utility constructions. Stewart Collection by courtesy of the Clare Archaeological and Historical Society.

Castlepark, Limerick. A photograph taken by Stan Stewart in the early twentieth century showing the fine eighteenth century front with its unusual central portion containing the cut stone pedimented doorcase at its ground floor level. By courtesy of the Clare Archaeological and Historical Society.

