

EXCURSION TO DUBLIN

On Sunday, September 22, in connection with the All-Ireland football final at Croke Park, Senior Dublin v. Galway, special trains will be provided. Timetable and Day Return Fares will be:

FROM TRALEE	Day	Ret.
Depart	Fares	Fares
Tralee	07.25	£4.00
Farranfore	07.41	£4.00
Killarney	08.00	£4.00
Bathmore	08.27	£3.80
Killarney	08.51	£3.80
Banteer	08.51	£3.80
Yallow	08.08	£3.40
Puttevant	08.22	£3.40
Rathluir	08.24	£3.40
Killmallock	08.42	£3.10
Knocklong	08.50	£3.10
Limerick Jctn.	10.08	£2.80
Heuston Stn.		
Kingsbridge arr.	12.00	

Return train from Heuston Station at 19.40.

FROM LIMERICK	Day	Ret.
Depart	Fares	Fares
Limerick	08.45	£3.10
Birdhill	09.07	£2.80
Yenagh	09.24	£2.60
Goughjordan	09.39	£2.40
Boscrae	09.53	£2.20
Ballybrophy	10.10	£1.90
Mountlath	10.28	£1.70
Portlaoise	10.39	£1.60
Heuston Stn.		
Kingsbridge arr.	11.35	

Return train from Heuston Station at 18.50.

FROM GRANGE	Day	Ret.
Depart	Fares	Fares
Grange	07.40	£3.10
Carrick-On-Suir	07.50	£3.10
Donnell	08.09	£3.10
Cahir	08.28	£3.10
Tipperary	08.46	£3.10
Limerick Jctn.	08.57	£2.80
Dundrum	09.11	£2.60
Gold's Cross	09.18	£2.60
Thurles	09.30	£2.40
Templemore	09.43	£2.20
Heuston Stn.		
Kingsbridge arr.	11.10	

Return train from Heuston Station at 19.55.



(f21c)

ALCOHOLICS ANONYMOUS

If you want to DRINK—
that's your business.
If you want to STOP—
that's our business.

Contact Social Service Centre
(centr. St. Limerick)

Gingerbread Lady highlight of Limerick festival?

THE Limerick Festival of Theatre will be remembered for many things but perhaps most of all for staging in "The Gingerbread Lady," the most hilarious comedy ever seen in Limerick. This is not a rash assertion: from what we have seen and have known and have read of the drama, in this city for something over a century, nothing has surpassed this presentation by Gemini Productions for meaningful wit and professional competence.

The story is old enough. Maureen Toal in the role of Evy Meara is a dried out alcoholic full of sex and remorse, with a small circle of dead-beats to share what attractions her ageing body can offer, and whose daughter, Mary Kearns as "Polly Meara," a 17-year-old college student, battles for her rehabilitation.

The high note of comedy is set in the opening scene by Philip O'Brien, who as "James Perry" is an out-of-work actor and the "oldest God-damn newcomer to showbusiness," and James Greely, who plays to perfection the part of a precocious delivery boy—he is always ready to deliver more than the goods.

Conviction

Olivia Shanly as "Toby Landan" hides her forty years with the aid of beauticians to capture the affections of more than her husband, and does it with ease and conviction. A family estrangement results and she is advised by drink-sodden "Evy Meara" to take the crap off her face and reveal her true identity: "My Polly would give you a sex lecture that would make your eyeballs fall out."

Maurie Taylor as "Lou Tanner" gives a convincing performance as an unsuccessful musician whose overtures to "Evy

Heights

The play reaches to dizzy heights of hilarity in the second act when Maureen Toal gives what one might well assess as one of the finest performances of her career. And here too, the skill of playwright Neil Simon is shown in his skilful handling of the contrasting themes of pathos and merriment.

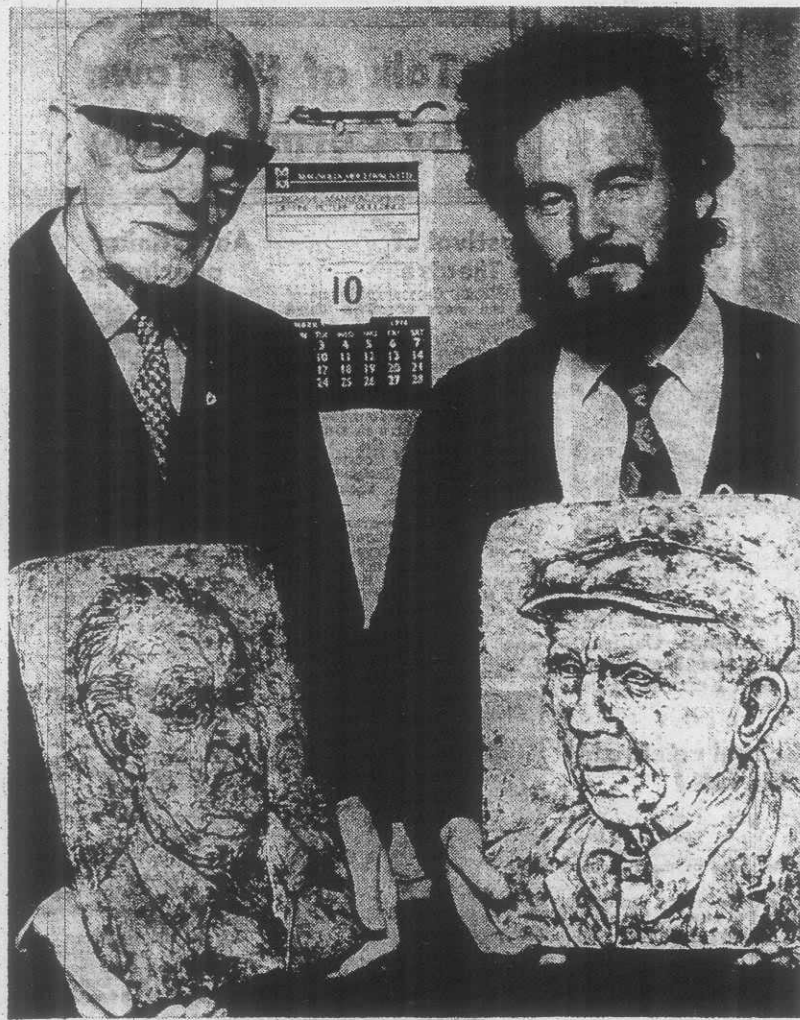
The apartment setting is functional to serve the three acts without alteration. The play is lengthy, but the minutes fly on feathers, sped by sparkling wit and interpreted by a cast that fully sustain the magnificent performance given by Maureen Toal.

"The Gingerbread Lady" comes to Limerick after a long and successful run at the Eblana Theatre. It is the cornerstone that strengthens and sustains the flagging fabric of this season's festival, and it is symbolic and fitting that it should be presented by Gemini Productions, the company of Phyllis Ryan, who has worked so hard for the success of drama in Limerick.

—R.N.



Philip O'Brien and Maureen Toal, pictured in a scene from the hilarious comedy, "The Gingerbread Lady", by top American humorous writer, Neil Simon, author of "The Odd Couple". The play, which ran for six months in Dublin, is being presented all this week at the City Theatre by Gemini Productions.



Mr. Jim Connolly (right) and Mr. Frank O'Mahony, senior, managing director of O'Mahony's Bookshop, with examples of ceramic portraits.

Picture: DERMOT LYNCH

LIMERICK MAN WHO DOES IT HIS WAY

THE only career guidance Mr. Jim Connolly—a Limerickman—got when leaving school was a word in his ear from a Christian Brother telling him to forget about art as a career.

The best day's work he ever did was to disregard this advice. And, as a result of this decision, he is now living life on his own terms, and is doing what he always wanted to do—combining artistic expression with providing for his family.

He is living in a cottage of his own at Kibbaha, County Clare, and is doing portraits in ceramics.

Mr. Connolly told me that in his opinion, this is a completely new form of portrait. "It is a unique type of plaque—I am unaware of anything like this being done before," he added.

The plaques are on display at O'Mahony's bookshop, O'Connell Street, and to appreciate them fully, you would have to go along and see them for yourself.

You will not be disappointed if you do. The photograph shows some of these, but it does not represent them fully.

If you want a plaque or portrait and do not feel like getting one done of yourself you may purchase one of those already made.

During the summer (what summer?) Mr. Connolly received a commission from an English visitor to do a portrait of him.

The visitor got some replicas made of this for his children.

This idea of being able to get copies made cuts down the cost of a portrait, but you still get a unique work of art.

Impressed

Mr. Connolly was impressed by the fact that this man from England was just an ordinary working man and this gives him hope that many people in this area might follow the example and get their portraits done.

Mr. Connolly attended Sexton Street C.B.S. in Limerick up to 1956, and then went on to spend four years in the Limerick School of Art and qualify as an art teacher.

He worked his way through the art school by playing the piano. After he qualified he was a founder member of the Monarch Showband, which he remained with for a number of years. He got married the day he left the band.

He then became involved in Monarch Enterprises, which mainly dealt with advertising.

But he declared: "The pressures of that kind of work were not for me. In 1969 I made the break to

Donegal and taught at a new comprehensive school at Glenties for three years."

In 1972, Mr. Connolly went to Kibbaha, where he has a cottage since 1969.

"I have my own studio and house there—I am rearing my children and I'm very happy. This is a complete and total change. I cut my own turf and grow my own potatoes."

He recalled having six fresh vegetables on his table one day—all of which he grew himself.

In the future, Mr. Connolly hopes to combine crafts at his workshop. He does not think it is wise to confine himself to one form of art. He will continue to do portraits in ceramics as well as other types of plaques.

O'Mahony's in O'Connell Street, are the sole agents for his work, and examples are on display there.

Shannon Furniture Carpets Co. Ltd.

30-31 UPPER WILLIAM ST., LIMERICK — Tel. 1

Great Carpet Sale

(Noel Woods)

Diningroom Carpet, 5-year guarantee, per sq. yard
Sittingroom Carpet, Super Heavy, 5-year guarantee, per sq. yard
Bedroom Carpet, Heavy, per sq. yard
Nylon Bedroom Carpet, 5-year guarantee, per sq. yard
English Heavy Axminster Carpet. Not repeated! Per sq. yard
Emerald Star, Heavy Nylon, per sq. yard
Super Diamond Carpet, large selection, 5-year guarantee. Per sq. yard
Gold Axminster Carpet, per sq. yard
Plain Heavy Carpet, per sq. yard

Bedding Dept.

(John Moran)

(ALL BEDS FIVE-YEAR GUARANTEE)

3-ft. Divan Bed with Teak Headboard £
Double Divan Bed with Teak Headboard, 5-year guarantee £
3-ft. Mattress £
4-ft. Mattress

Floor Covering

(Ken O'Brien)

English Lino, per sq. yard
Cushion Floor, per sq. yard
Bocato, per yard
Navalon, per lin. yard
Pillows
12-ft. wide Gaf — AT OLD PRICE!

● Sittingroom Suites, Diningroom Suites, Bedroom Kitchen Suites.
● EASY PAYMENTS (PROVIDENT): £100.00 V FOR £140 PER WEEK!

HAYES-FOYNE

— Great —

AUTUMN SALE

Fantastic reductions — for two weeks only
COMMENCES THIS FRIDAY, SEPT. 20

Winstons September Surprise Sale

Now here's
a Sale you didn't expect...

And it's a wow of a sale with really great reductions.
Look at this surprise list:

HOUSEHOLD

OVEN GLOVES, were 32p, NOW 22p
HAND TOWELS, were 98p, NOW 69p
BATH TOWELS, were £1.98, NOW 98p
BATHROOM SETS, were £2.95, NOW £1.95
S-T-R-E-T-C-H COVERS, box sides, zipped, were 59p, NOW 39p

BOYS'

DENIM JEANS, size 23-28, were £3.25, NOW £2.10

CHILDREN'S

PLASTIC RAINCOATS £1.35

KNITWEAR

SHEPHERD CARDIGANS, were £3.25, NOW £2.99
Also selection of JUMPERS at REDUCED PRICES

BLOUSES — Amazing Value!

JERSEY BLOUSE ONLY £1.99
POLYESTER BLOUSE, sizes 34-40, ONLY £2.50

SLACKS

CHECK SLACKS, were £3.25, NOW £1.99
JERSEY SWING SKIRT ONLY £1.99

Knockout Bargains at The Carpet Supermarket stock clearance sale!

Save up to 50% on top quality new carpets.

27" Tintawn Recommended price per yard £1.50 Our price 75p

27" Heavy Quality Axminster Recommended price per yard £6.00 Our price £3.00

27" Heavy Quality Wilton Recommended price per yard £6.00 Our price £3.00

36" Heavy Quality Axminster Recommended price per sq. yd. £5.50 Our price £3.75

36" Heavy Quality Carved Pile Recommended price per sq. yd. £4.00 Our price £2.25

36" Heavy Quality Wilton Plain Recommended price per sq. yd. £10.00 Our price £5.00

44" Heavy Quality Axminster Recommended price per sq. yd. £5.25 Our price £3.75

44" Hotel Quality All Wool Recommended price per sq. yd. £9.25 Our price £6.50

plus!

Over £100,000 of current stocks to choose from

Teaching

Miss Mary Hannon, Knockaderry, and Miss Mary Keating,