

# GENERAL NEWS

SATURDAY 15 JANUARY 1994

## EV+A takes to the streets . . . literally

By **DYMPHNA BRACKEN**

CONTEMPORARY art will be brought onto the city's streets in March when, at the invitation of EVA, European and American artists will work in public in 16 different locations throughout the city.

The varied and works of the artists promises to create excitement and wonder never seen before on the streets.

The locations include the People's Park, Colbert station, Steamboat Quay, Harvey's Quay, Limerick Rowing club, Custom House Park, King John's Castle and the School of Art and Design

Italian artist, Fausto Della Chique, is planning to arrive in the city four or five days before the exhibition with some works in a plastic bag.

During the six weeks of the exhibition he will live homeless on the streets and will make things from what ever he finds.

Swedish artist, Stevan Bachelder, will place a digital clock in the water at Poor Man's Kilkee. The clock will operate 24

hours a day. The year, date, hour, minutes and seconds will be luminous and will bring life to the river.

Over 7,000 people visited the EVA exhibition last year, and with the excitement planned for this year, that number is expected to increase significantly.

Hugh Murray, chairman of EVA, told the Limerick Leader, that the exhibition is the first major step in making Limerick EVA a significant international forum for contemporary art.

The open section of EVA and young EVA will proceed as in previous years.

Jan Hoet, the curator of Documenta IX, the major international contemporary art exhibition held in Kassel, Germany, last year, has already visited the city and selected a number of exhibits from over 450 entries, including a number from Great Britain and France.

The selected exhibits will be on show in the City Art Gallery for the six weeks of the exhibition, and also in locations throughout the city including City Hall, Slattery's in Edward Street and AIB in

O'Connell Street.

In respect of Young EVA, local artists Fiona Burke and Gavin Hogg, have been working with groups of young people in St Mary's School, Corbally, and in the Southill Resource centre for the past few months.

The works of Young EVA will go on show in the Belltable on March 12 for six weeks duration.

Inevitably, according to Mr Murray there will be significant additional costs involved in mounting this year's EVA.

The Corporation have already allocated £10,000 and Shannon Development £5,000 towards the staging of the exhibition.

The Arts Council are contributing £40,000.

Walsh Western, who are celebrating their 25th anniversary this year, are providing transport as part of their contribution, and Reddan Insurances are sponsoring insurance costs.

However, Mr Murray said more money is needed. He appealed to businesses and commercial organisations for funding in

kind.

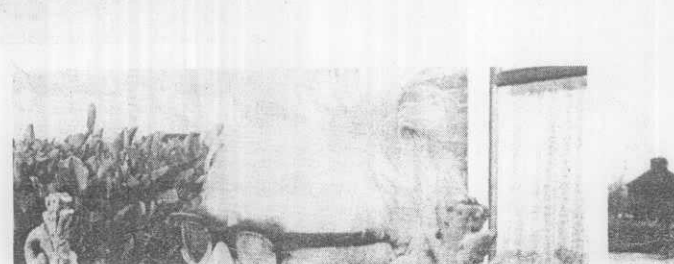
As each of the visiting artists will be looking for varying materials at short notice, Mr Murray said offers of materials from suppliers or accommodation would be very much appreciated.

For £100 a company can sponsor one of talks being organised in the City Art Gallery for school children and enthusiasts of EVA during the exhibition.

Explaining why EVA decided to extend the exhibition this year, Mr Murray said the raw materials for such an extension are very visible in the city.

An informed and experienced organisational structure, the city gallery, a multiplicity of additional venues throughout the city, an on-going transformation and renewal of the historic city core and a university with ever increasing investment and support for the arts.

"The combining of these resources with the tremendous good will that EVA has received from our international adjudicators should allow us to achieve any objective that we might set ourselves," he said.



### Condition stable

MAURICE Hartery of New Road, Thomondgate, was taken to the Regional Hospital, Dooradoyle, following a road accident on the New Road on Monday

### DEATHS

DILLON (nee Heffernan) — on January 13, 1994, peacefully, at home, Patricia, beloved wife of the late John, 32 O'Donoghue Avenue, Janesboro, Limerick. Deeply regretted by her loving sons, John, Brendan and Paul; daughters, Mary, Vera, Jean, Geraldine and Phil; brothers, sister, sons-