

LIMERICK CIVIC TRUST

The Trust, which was founded in 1983, has as its headquarters the newly restored Palace of the Church of Ireland Bishops. Known simply as the Bishop's Palace, the building dates back to the seventeenth century and is thought to be the oldest standing domestic dwelling in the city.

project along with a number of environmental type projects at key locations. During the past seven years, forty three projects have been completed.

history of Limerick and the Trust's activities were planned to support the Corporation and Treaty

new pathway was provided at Shannon Rowing Club Quay and a roadside landscaped area



Billy Peacock

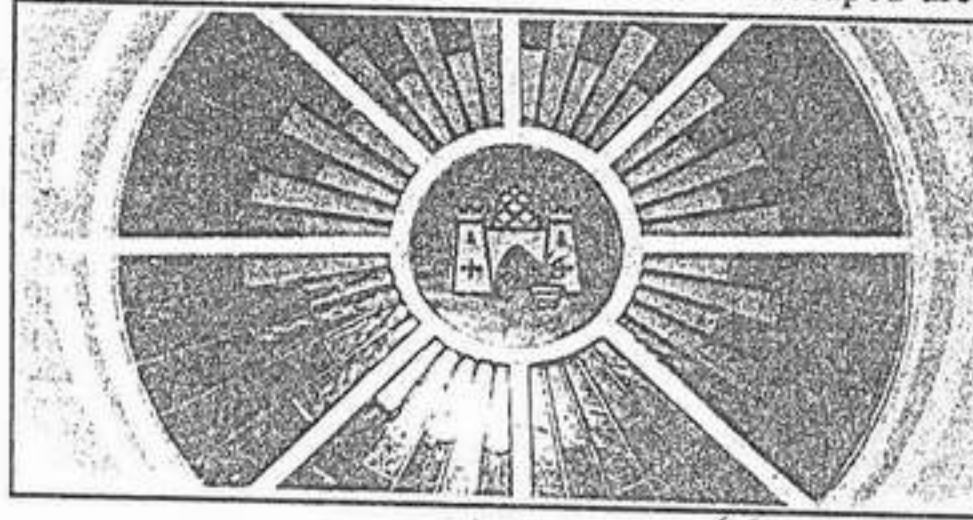
The policy of the trust is to carry out one major



Denis Leonard

Currently, the major work in hand is the restoration of the grandeur of St. Mary's Cathedral.

This year has been a most important year in the



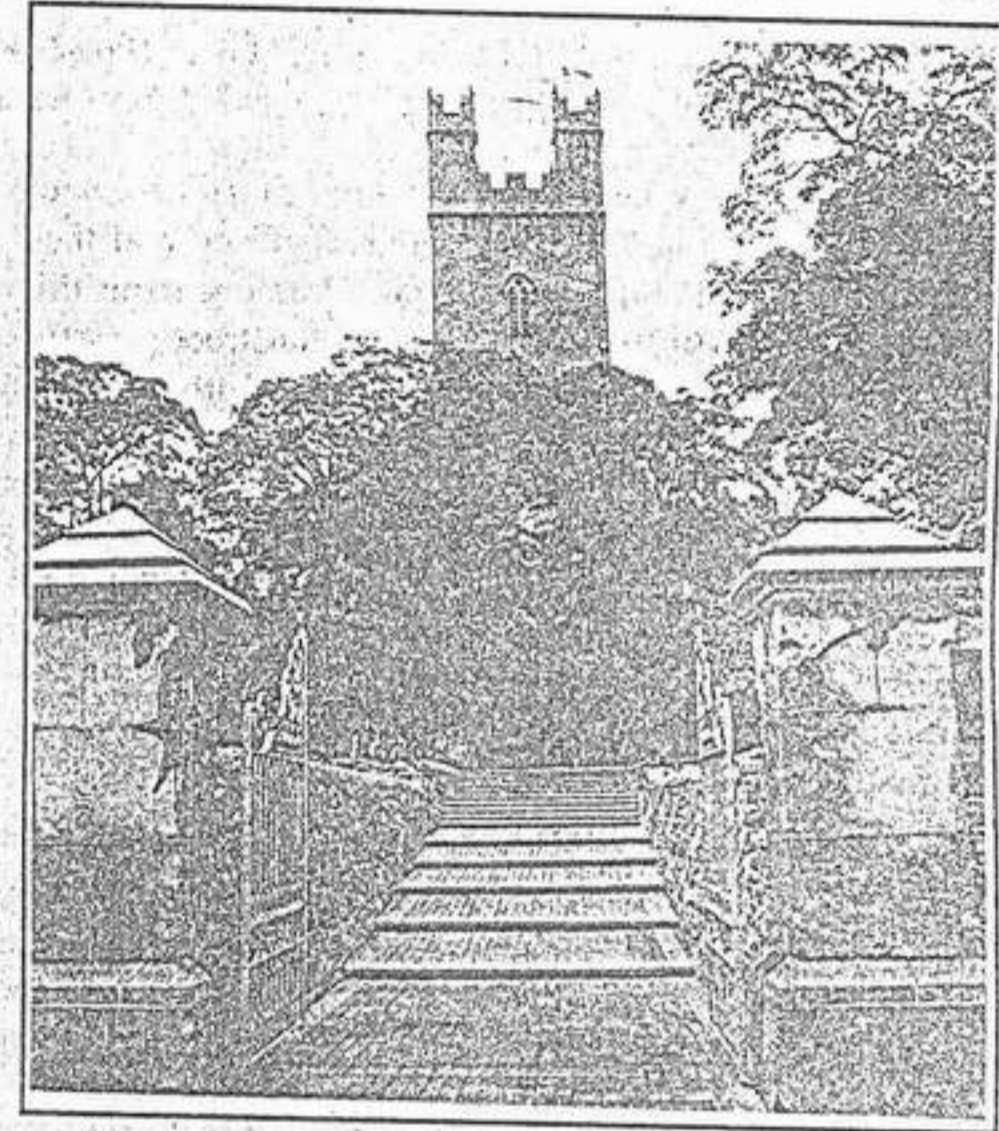
Bishop's Palace: Limerick Civic Trust

300 in their admirable efforts to promote Limerick at its best.

Three viewing decks were installed at Georges Quay and the Limerick Memorial was repaved. A

was developed at Church Street.

'Heritage Walking Trail' and a 'Trail of Three Limericks' are the titles of their most recent publications.



New entrance to St. Mary's Cathedral

GROWING CONFIDENCE IN LIMERICK *by Jim Barrett.*

In a year that started slowly with a new major developments, the conclusion of the builders holiday period saw the commencement of major building projects in the City. The principal undertaking being the £30 million "Cruises" development which will see the single largest "backlands" development in the City since the Watergate Apartment Complex in the late '60's and this is due for completion in late Summer 1992. Of equal strategic importance is the extension of the Charlotte Quay frontage in the form of Cooneen Development's new Office Complex. A building larger in frontage terms than the existing ICC House, this complex will house the Tax Officials currently located in Sarsfield House, which once vacated, will be refurbished to accommodate the Office of the Inspector General from Dublin. Work is also due to start shortly on other major commercial developments at Charlotte Quay across

from the Granary and at Henry Street next to Mount Kennett House.

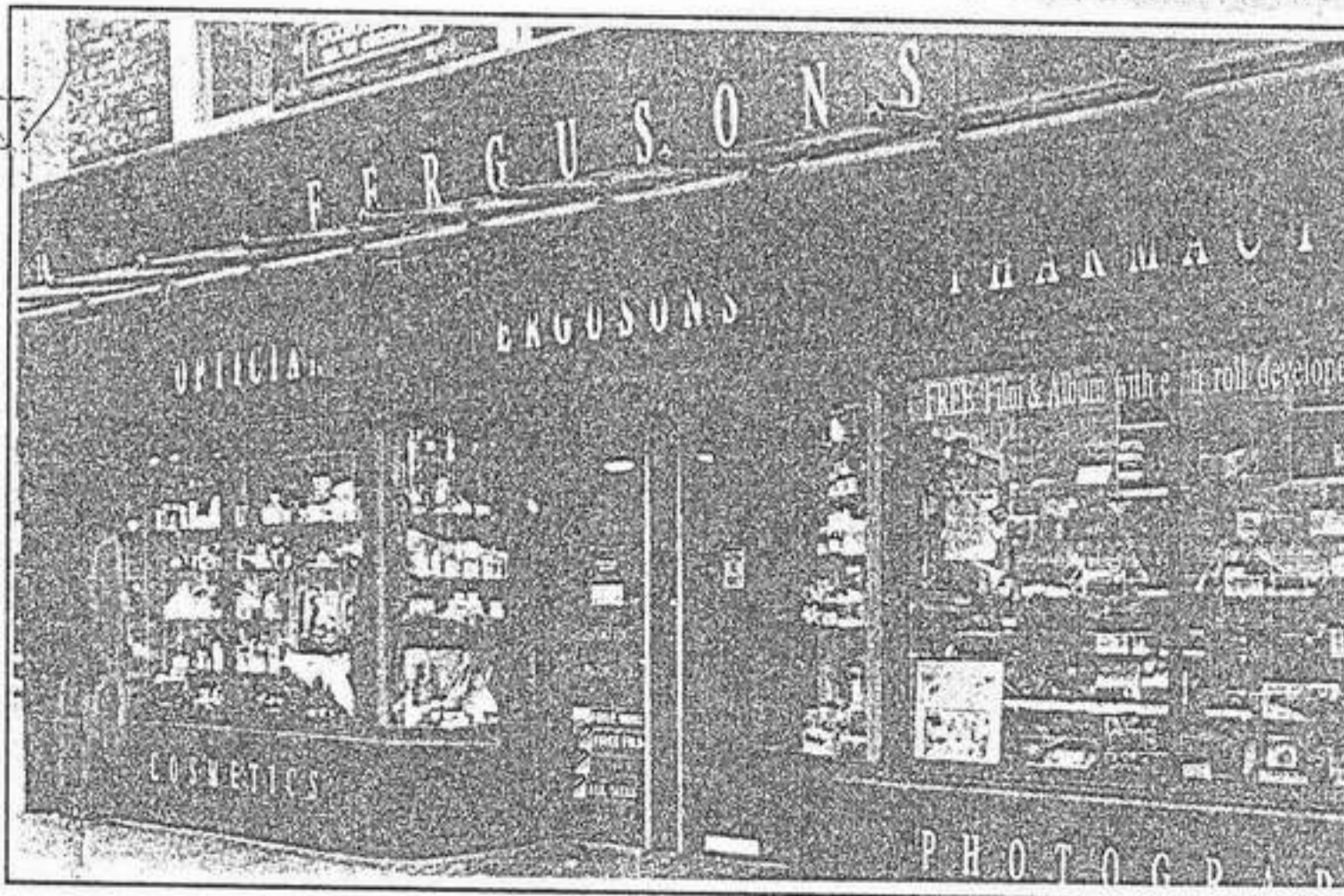
It is notable, looking up O'Connell Street, the amount of scaffolding erected for the purpose of building along the street. You have the A.I.B. headquarters refurbishment project, Roches Stores redecoration job and now the fitting out of the shop unit at Thomas Street corner. The painting of the Foley Chemist property has also lifted the City's main commercial crossroads adding to the vitality and

Municipal Buildings of the highest design standards, these recent private and commercial developments show a marked improvement in Limerick's urban design. This has also been borne out by the results of the Corporation's Environmental Awards for 1991 with awards going to "NO. 15", Patrick Street (Best Pub Front), "The Mill" Glentworth Street (Best New Office) and Fergusons Chemist (Best Shop Front) in O'Connell street. These street frontage buildings express a new confidence

buildings, both public and private, express a freshness and confidence consistent with a city undergoing dynamic regeneration.

Future Development

As the "Designated Area" status begins to run out, a number of exciting new major projects have been lodged for Planning Permission with the Corporation - the largest of these being Tranvale Ltd.'s application for the redevelopment of the Old Rank's site on the Dock Road. This involves 20,000 sq. meters of retail



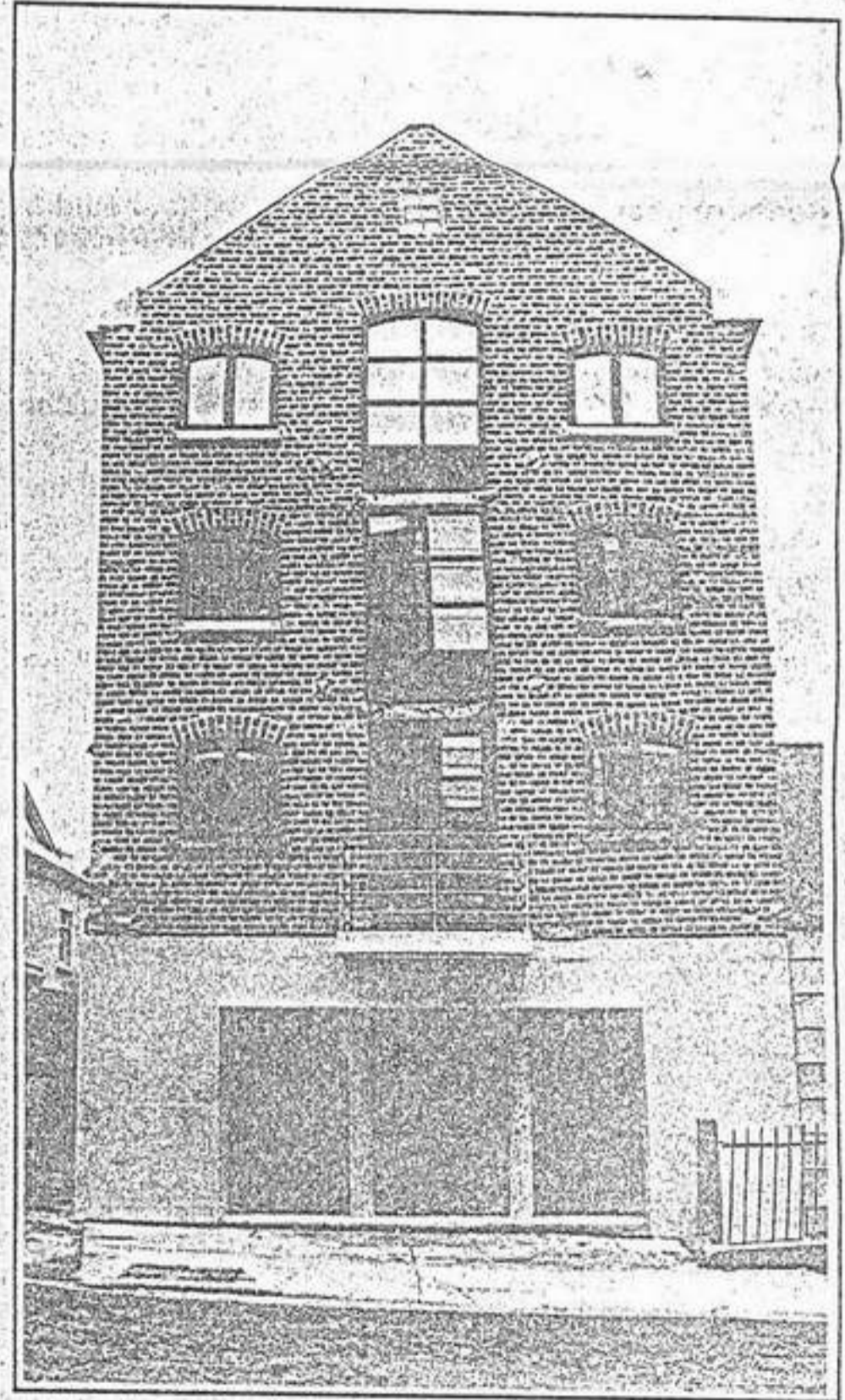
Fergusons Chemist: O'Connell Street

attractiveness of the City centre area.

With the Corporation/Shannon Development partnership leading the way in terms of

and strength in that, while accommodating historic characteristics, they manage to portray these in a contemporary manner. All in all, Limerick's new

warehousing space designed by Murray O'Laoire. At Sarsfield Bridge, overlooking the river, there is the Arkenstone Properties Ltd., proposal to build 40



The Mill: Glentworth Street

apartments, Shop and Restaurant on Harvey Quay. Both these schemes represent significant switches in development direction, in that the Tranvale (Ranks) scheme is the first major new development in the Docks Area and the Harvey's Quay project brings high quality apartment living to overlook "Poor Man's

Kilkee" and this section of Limerick's old quay front.

There are other substantial development moves afoot which give a clear indication of continued interest and growth in the Limerick City Scene.



Jim Barrett