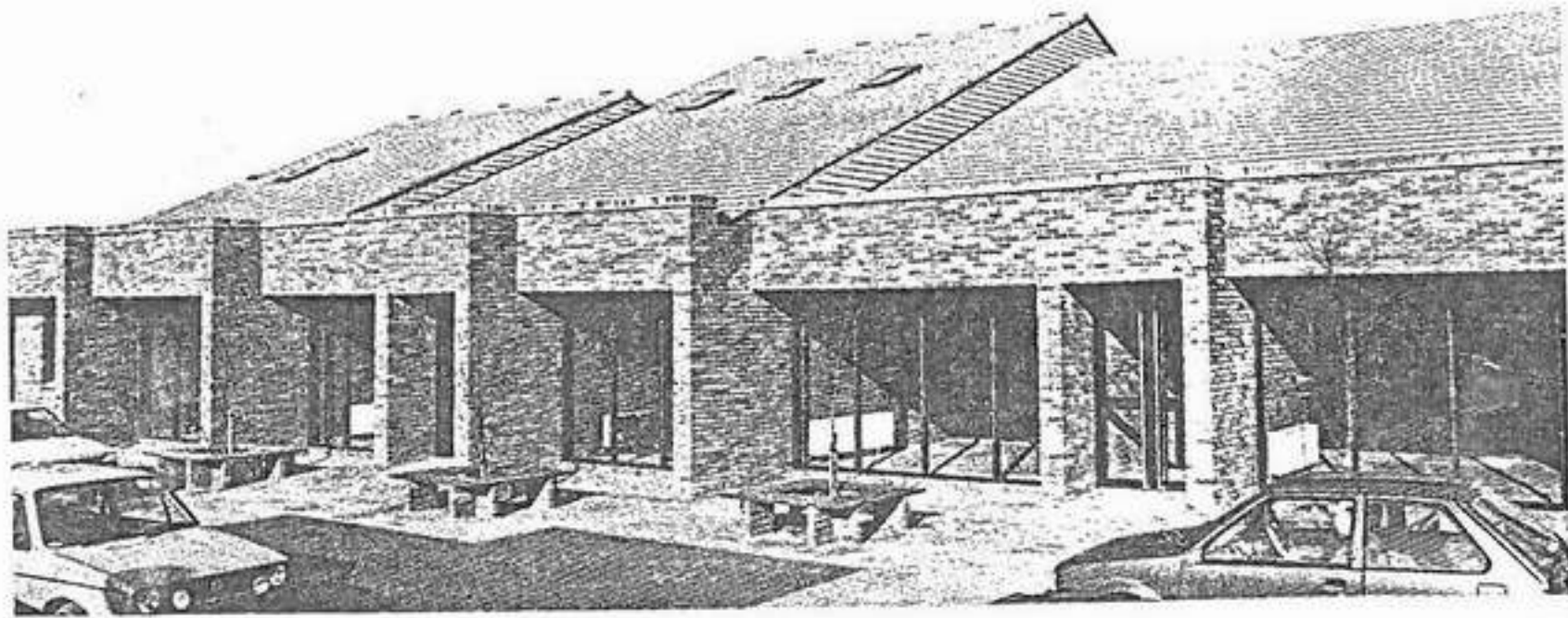
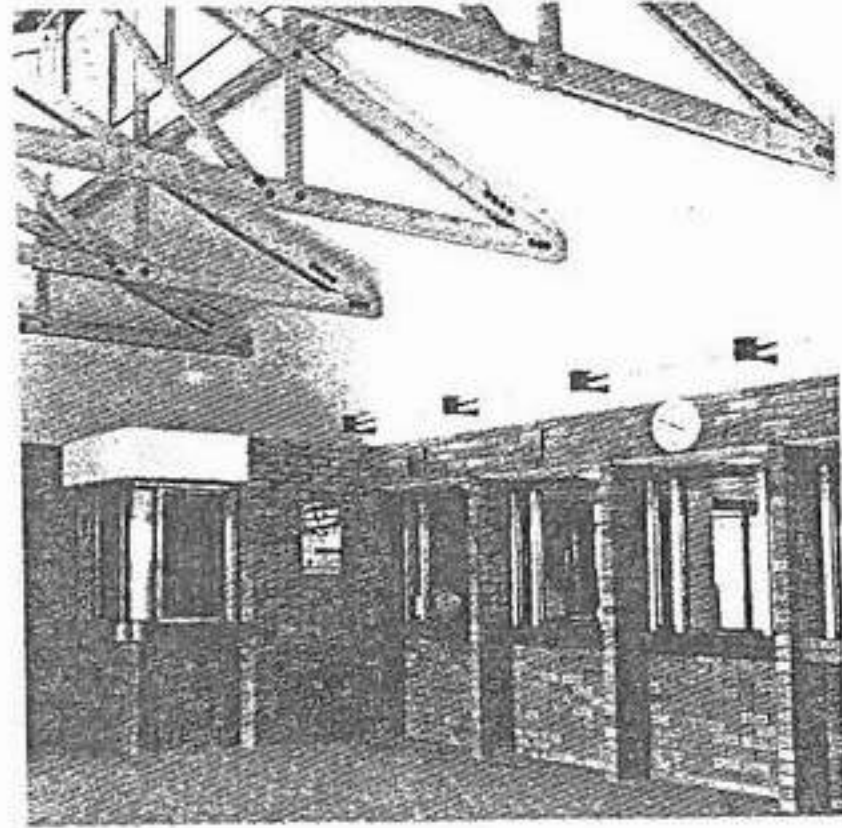


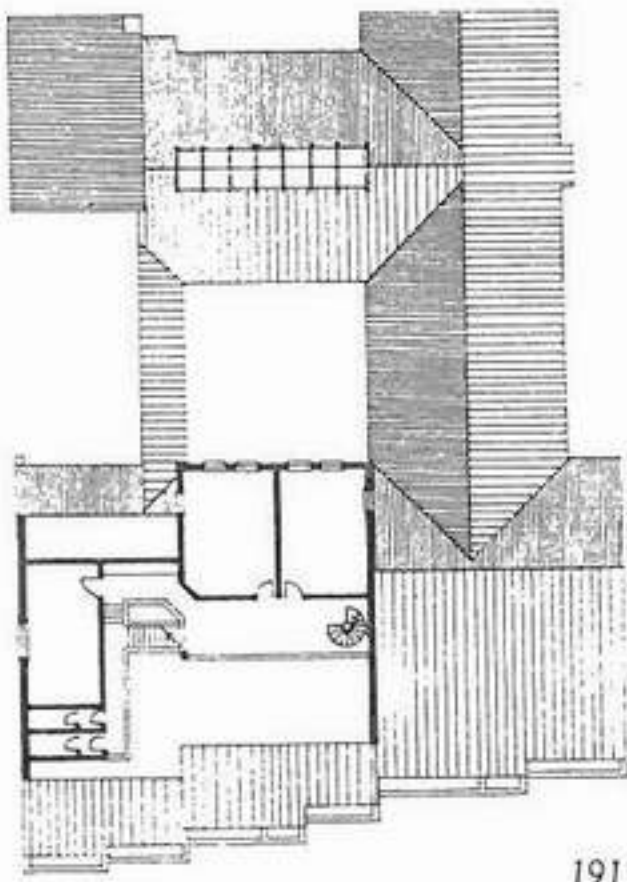
EMPLOYMENT
EXCHANGE,
Newcastlewest
189 internal and external
views
190 views
191 first floor
192 ground floor
193 cutaway projection



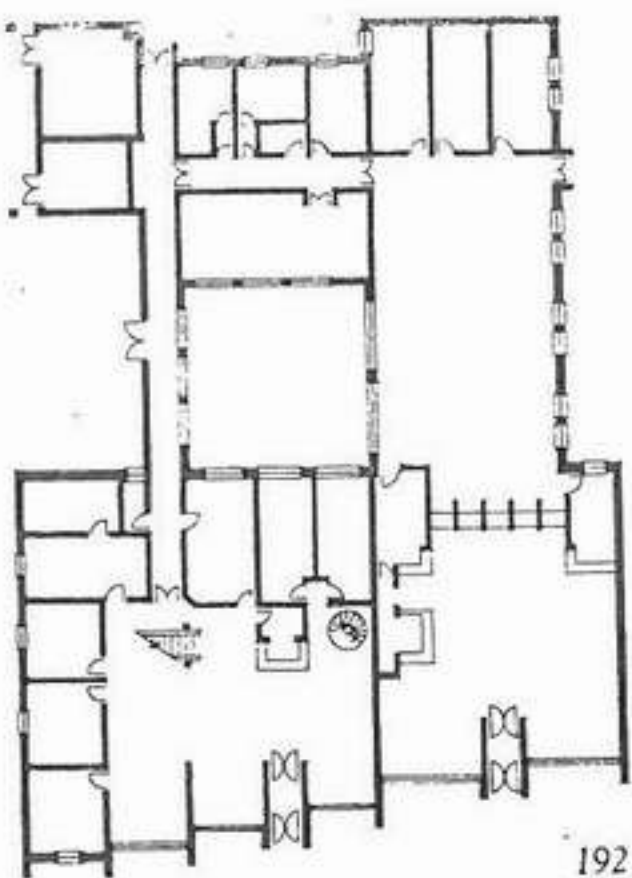
189



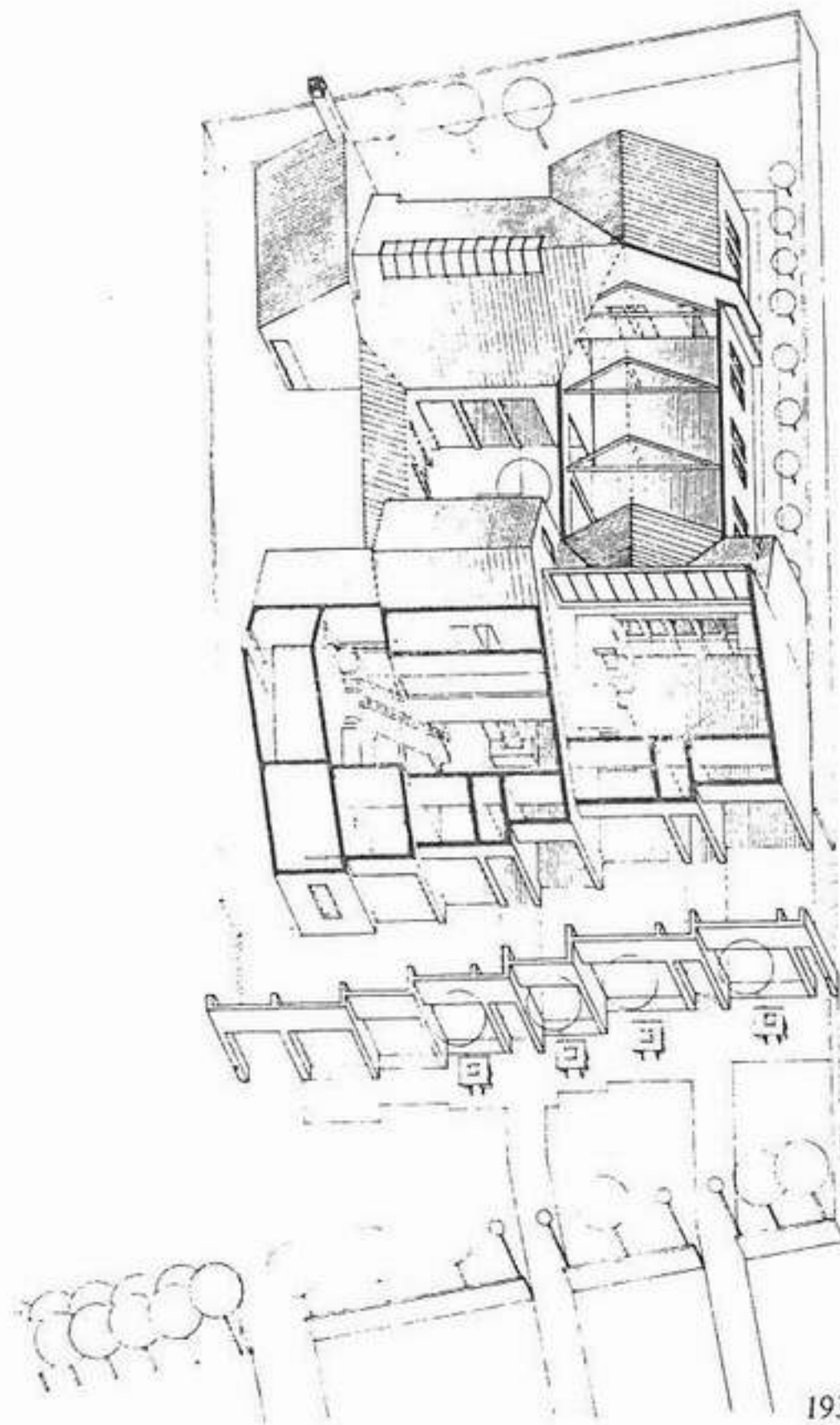
190



191



192



193

2

- EMPLOYMENT EXCHANGE, Limerick
- 184 view from Main Street
- 185 longitudinal section
- 186 ground floor
- 187 projection
- 188 front elevation

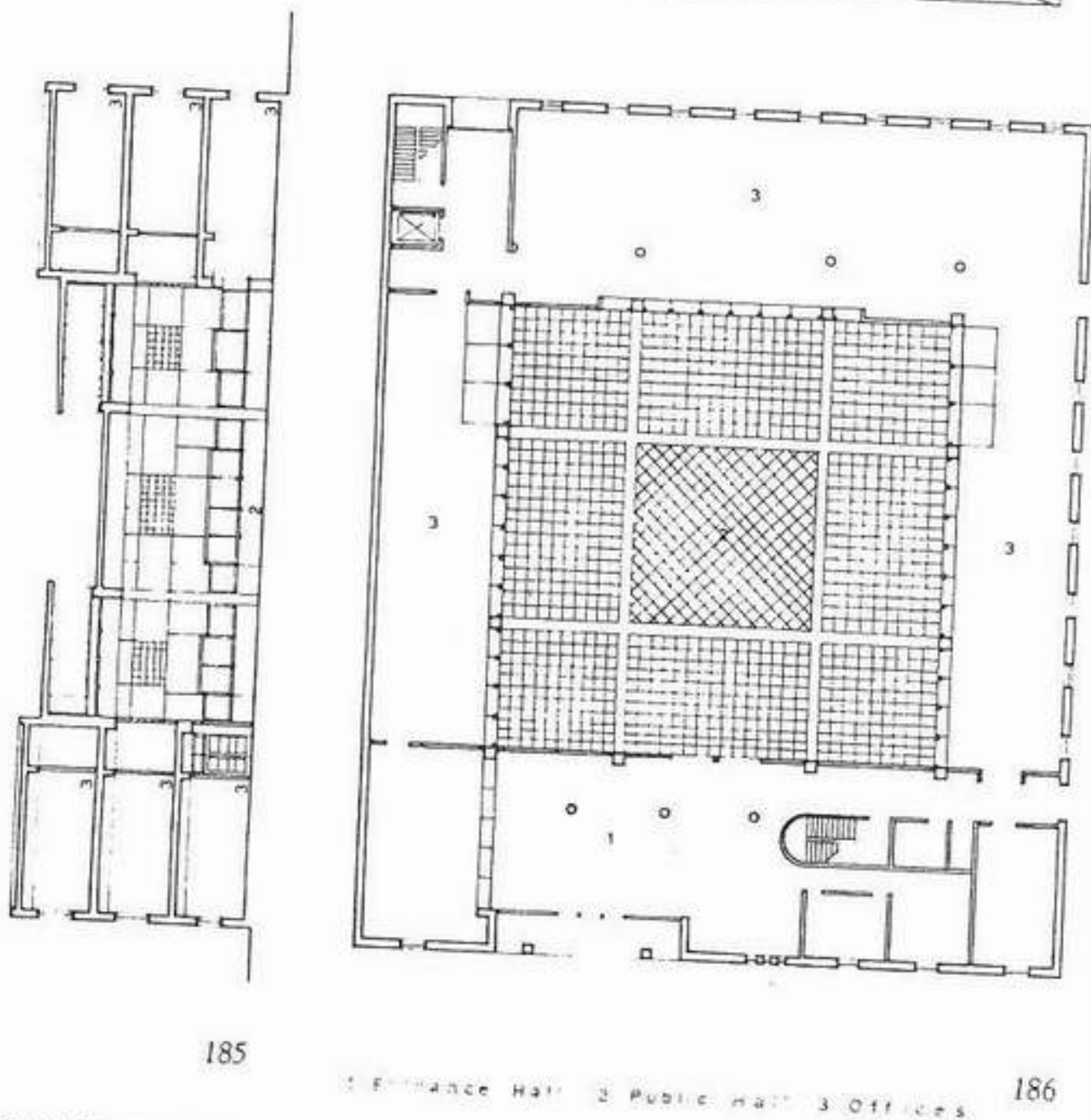


LIMERICK EMPLOYMENT EXCHANGE

This scheme is a design for a proposed new employment exchange and social welfare offices in Limerick city. The site is located close to the Main Street and has a dense urban character. The configuration of the site is rectilinear with a laneway to one side and car parking to the rear.

The design was concerned with emphasising the main public space and provision of natural light, while also presenting a strong urban character. The form of the building consists of a large central double-height public hall which is top-lit, with smaller offices flanking the hall on two storeys and connecting the three-storey administrative offices to the front and rear. The main entrance from Dominick Street is designed to provide a focus from the Main Street. Public access through the entrance hall leads to the main space of the employment exchange.

Project Architect: ELISABETH MORGAN
Senior Architect: HELEN BLAIR



EMPLOYMENT EXCHANGE, NEWCASTLEWEST

Initially for an employment exchange, the brief was expanded to include a group of small government offices.

The site is located on the perimeter of the town on the edge of an industrial estate. The front elevation is stepped to follow an irregular building line. This stepping is used to divide the front elevation into two volumes – the employment exchange and the government offices – and to provide a series of waiting areas for visitors.

The front elevation consists of two parallel planes, the outer providing a continuous street frontage in contrast to the tendency to set buildings far back and avoid any public face.

The courtyard is used as a private inner space and seating area and is overlooked by the large staff area of the employment exchange, the canteen, and by most of the individual offices on the ground and first floors.

Mixed Castlecomer 'seconds' bricks of varying shades are used externally and in public areas internally up to beam level.

Project Architect: DES BYRNE
Senior Architect: TONY O'DALY

