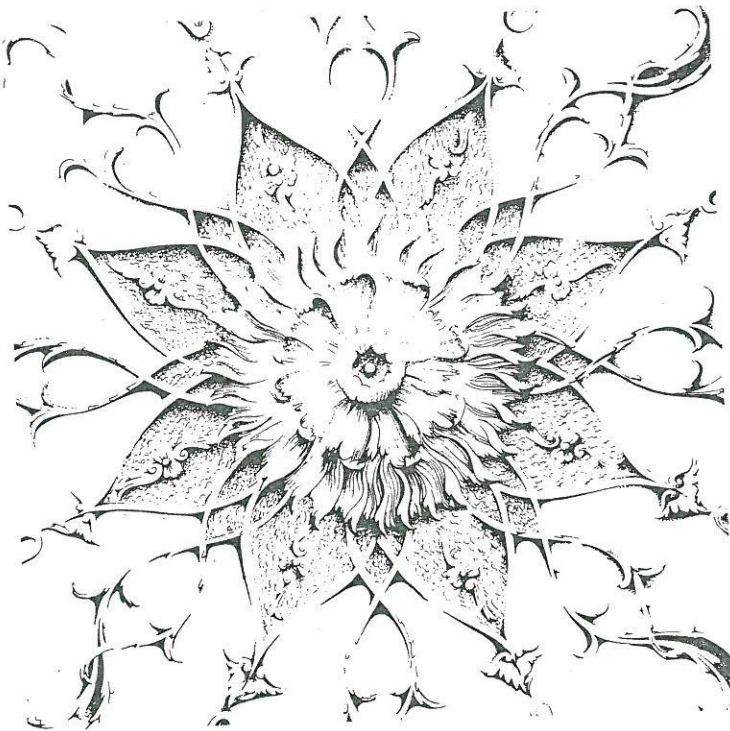


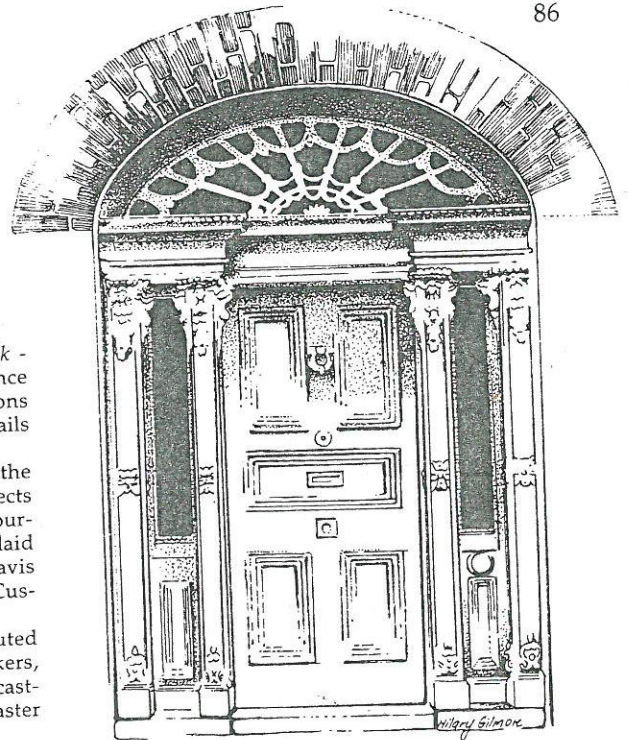
A.

4 pages



85

86

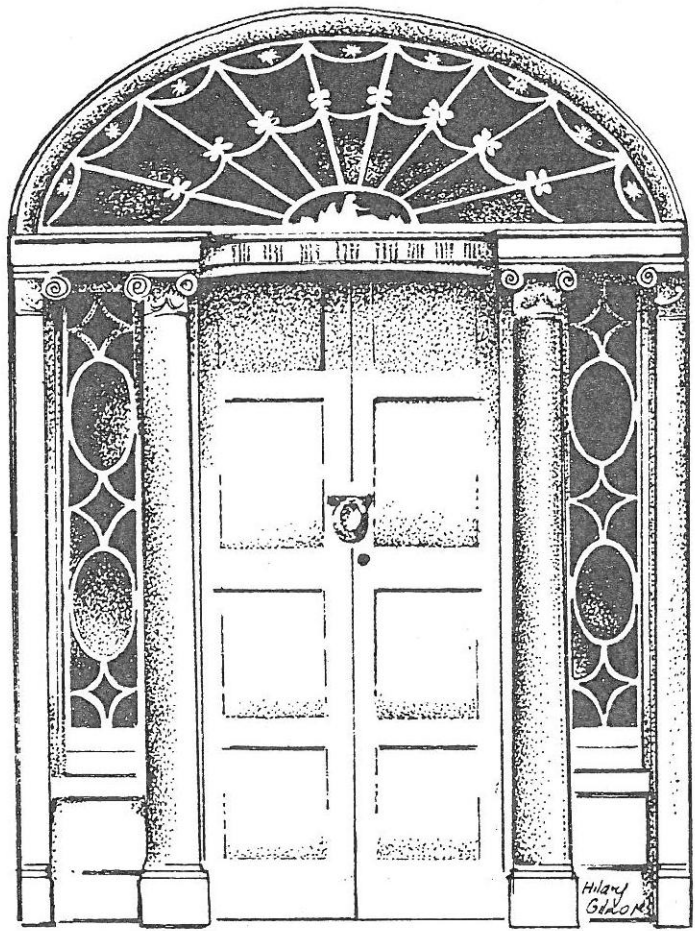


86-99 Features of Georgian Houses - Limerick - Georgian features are still very much in evidence in Limerick. Dignified and formal street elevations as well as many quite exceptional building details can be seen in many locations.

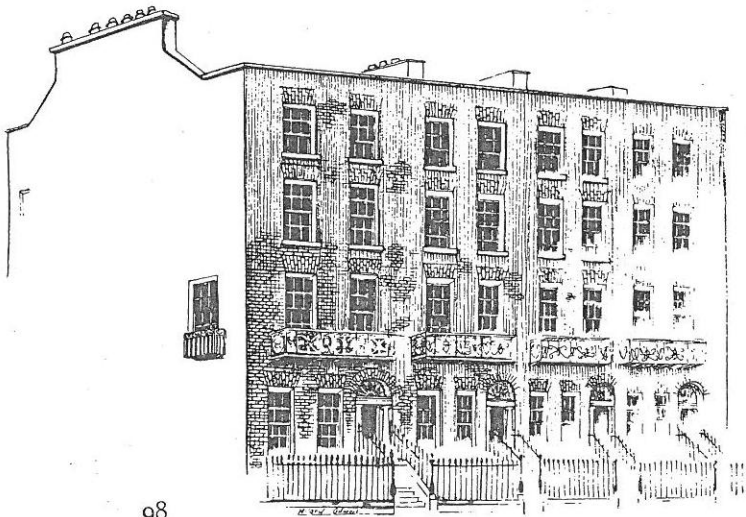
Development was undertaken within the framework of a formal overall plan. This reflects the vision and enlightenment of the right honourable Sexton Pery, who in 1769, had the streets laid out by a skilled town planner, possibly Davis Duchart, the designer of Limerick's splendid Custom House.

The skills of different trades have all contributed to the overall effect. These include brickmakers, stonecutters, stonemasons, wrought- and cast-iron workers, carpenters, woodcarvers, plaster workers, glaziers, painters and slaters.

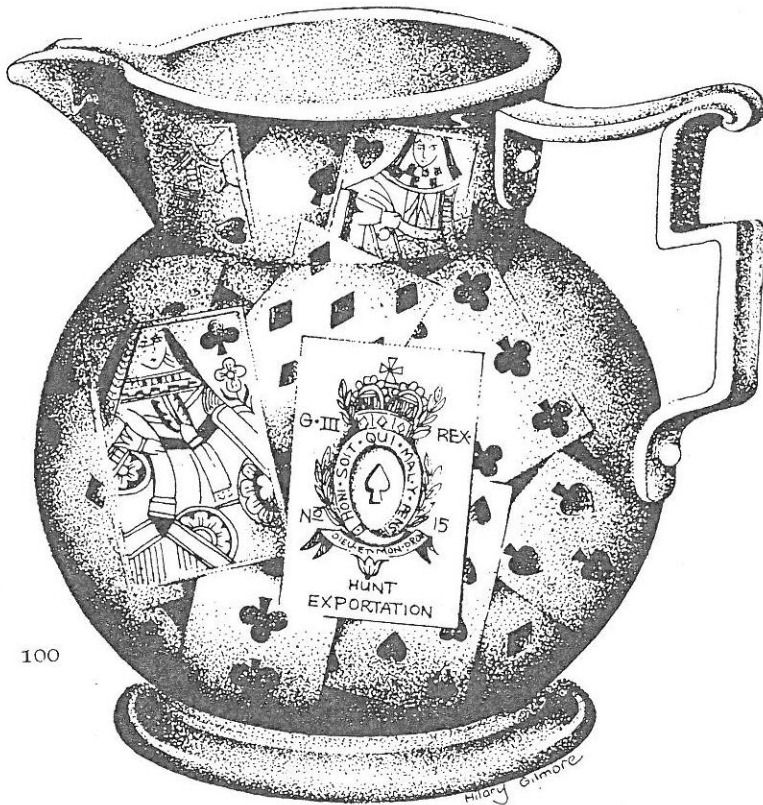
house, built for
kable drawing-
oral mouldings;
e ceiling rose.



99

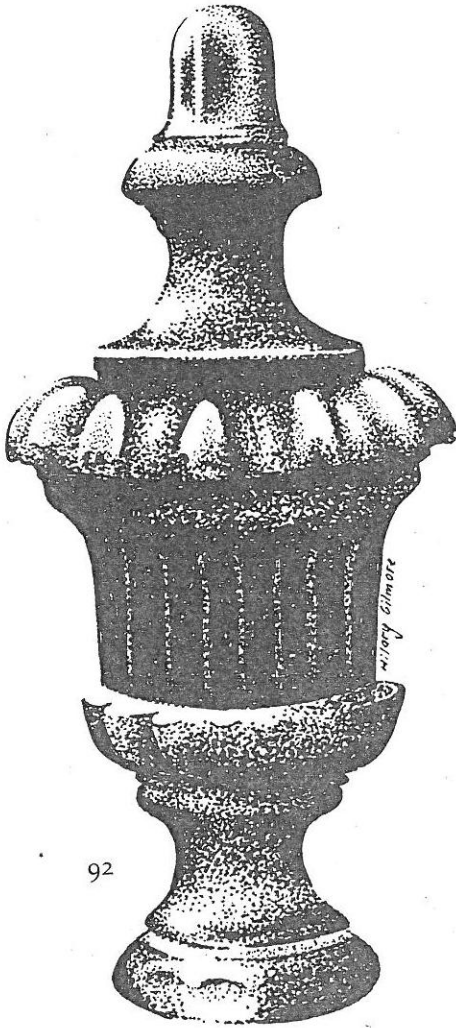


98

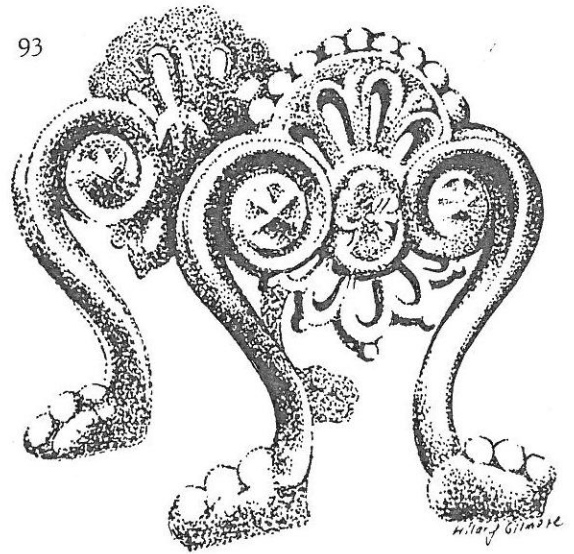


100

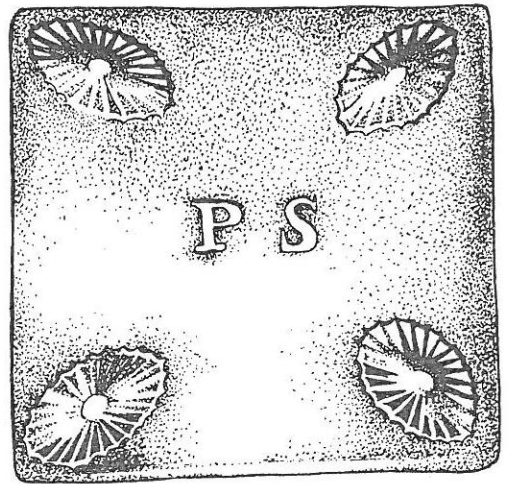
100 Pottery Jug - Limerick - There is no positive evidence available to confirm that pottery or ceramic work was undertaken in Limerick during the eighteenth century. However, a tenuous link can be established in the case of rather unique jugs, decorated with playing cards made in Lundy Island. Here a pottery was established by Sir Vere Hunt of Currachase, Co. Limerick. A jug of this type is illustrated here and one such jug may also be seen in Limerick City Museum.



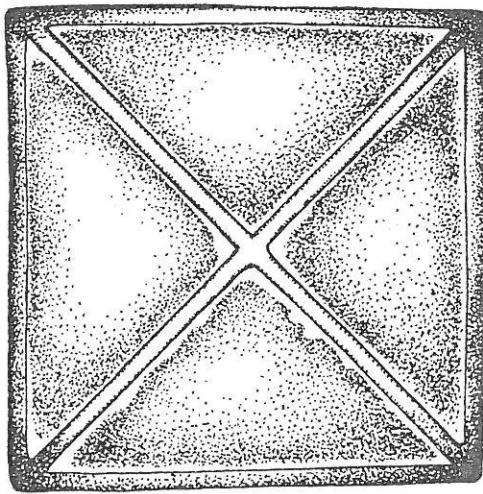
92



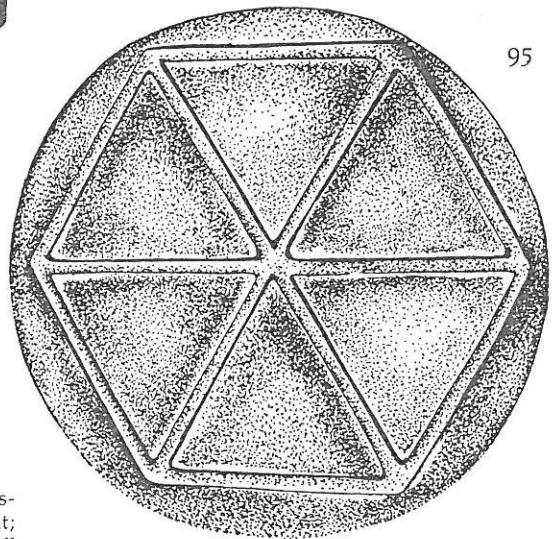
93



94



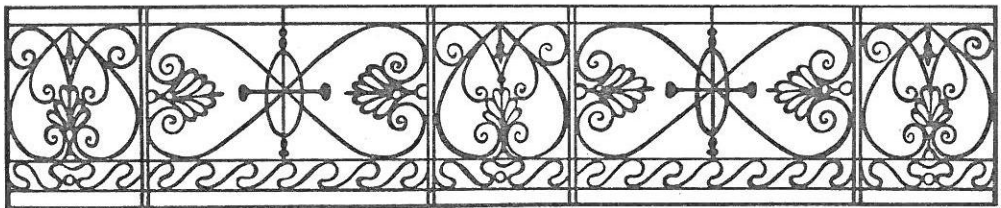
96

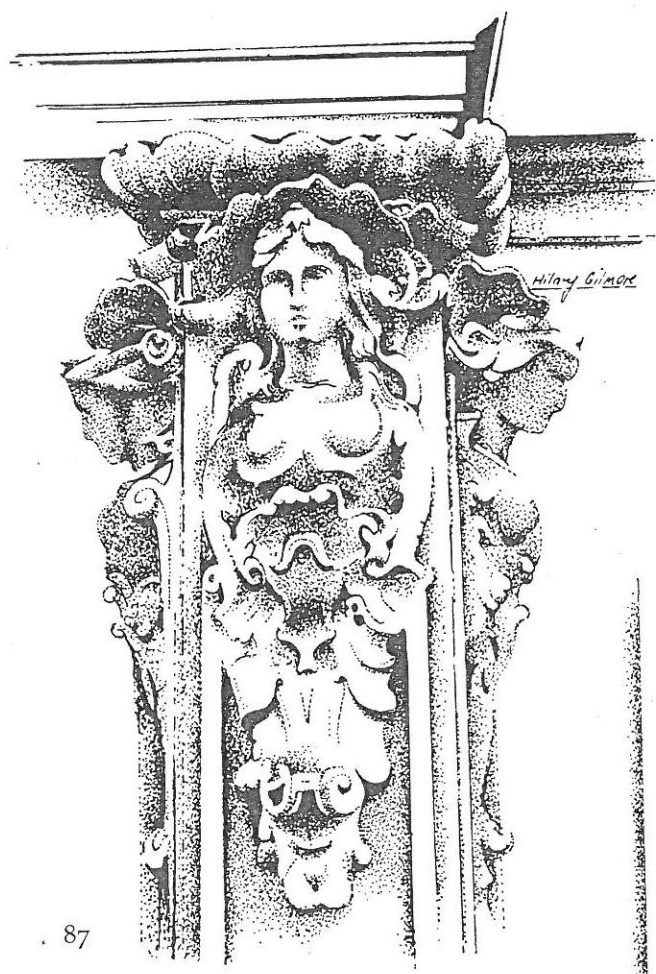


95

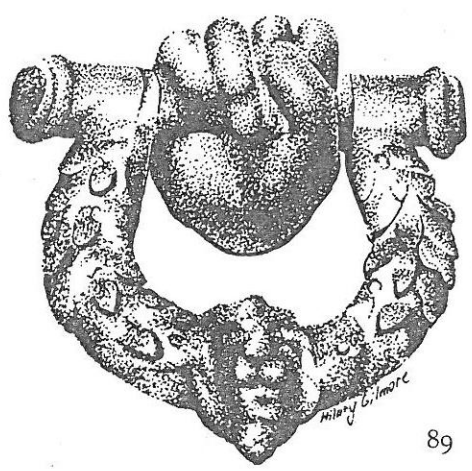
Fig. 92 railing detail, Upr O'Connell St and Crescent; fig. 93 cast-iron foot scraper, the Crescent; fig. 94 coal vault cover, Pery Square, shell ornamentation; fig. 95 coal vault cover, Mallow St.; fig. 96 coal vault cover, O'Connell St.; fig. 97 balcony detail, Pery Square; fig. 98 terrace, overall view, Pery Square; fig. 99 Georgian doorway, Balingarry.

97



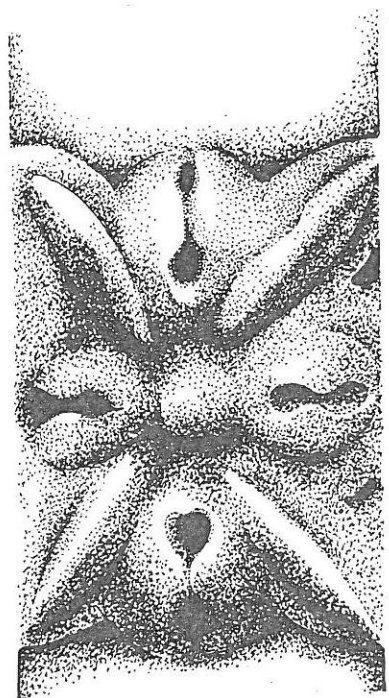


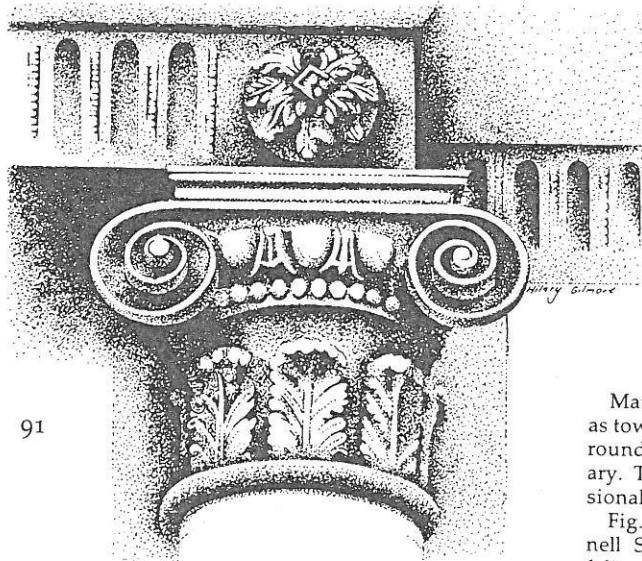
87



89

88

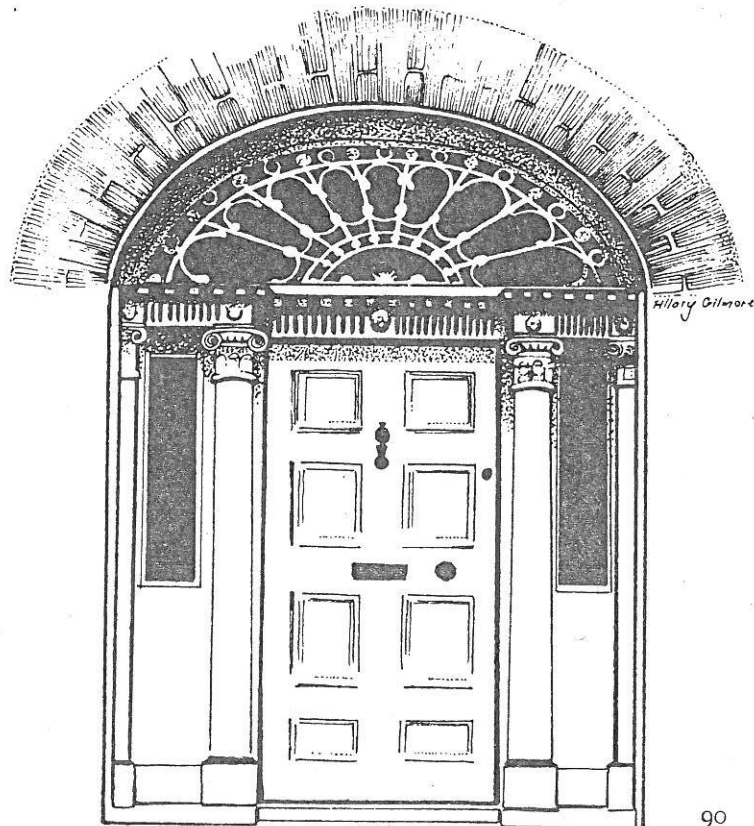




91

Many of Limerick's Georgian houses were built as town houses for landed gentry living in the surrounding counties of Clare, Limerick and Tipperary. Today, they are used primarily for professional, commercial and domestic purposes.

Fig. 86, a typical decorated doorway, 72 O'Connell St.; fig. 87 pillar detail, female head and foliage; fig. 88 flower detail; fig. 89 a cast-iron door knocker; fig. 90 doorway, 68 O'Connell St.; fig. 91 pillar detail, plumes and acorn, 68 O'Connell St.



90