

3.

5 PAGES



Sean Cooke

A double-decker bus and Georgian houses in O'Connell Street, Limerick.

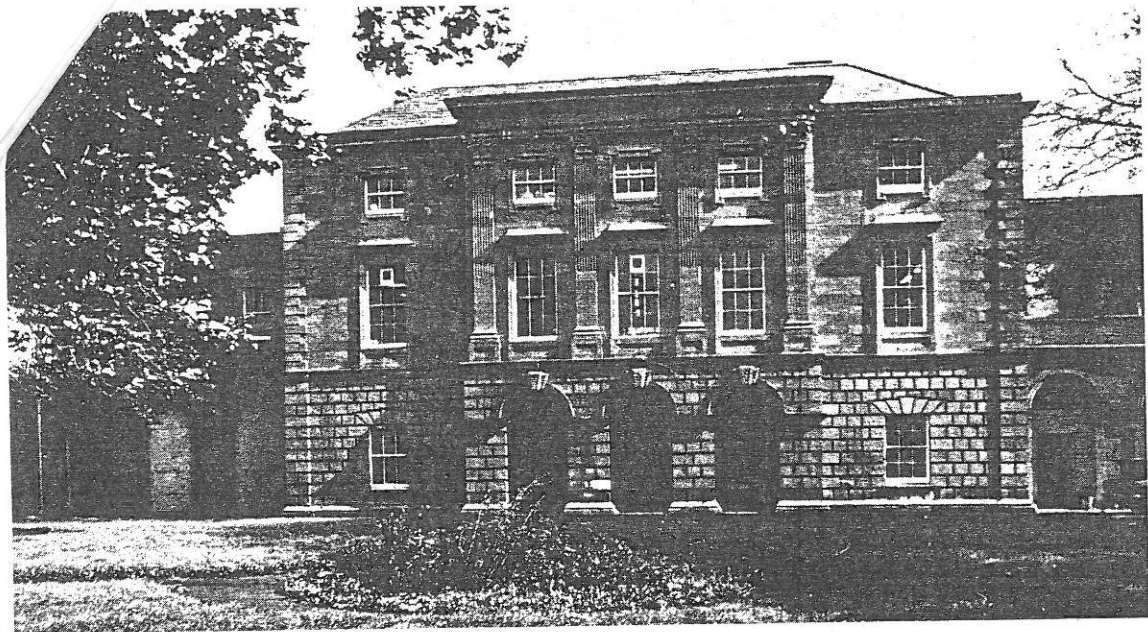
Limerick is famous for its bacon, its butter and cream. Van-loads of milk cans and squealing pigs rattle through the streets.

It is fun to ride upstairs on a double-decker bus. Like a rajah on his elephant or a sheik on his camel, one can look down on everybody else.

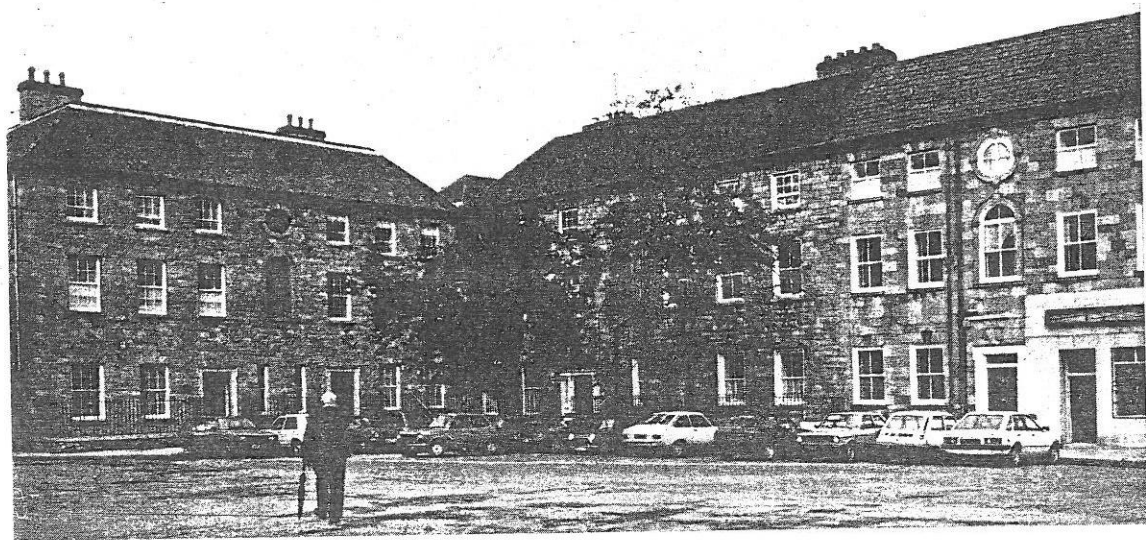
Thing
canno
penny

The
his he
the p
elegan
house
doors

Cro
bus g
hatch
or lou
the q
cargoe
expor
speed
the d
with t
of ye



31 *The Custom House, designed by Davis Duckart, completed 1769.*



32 *North side of John's Square, built 1751.*



33 *Georgian Limerick. The Crescent and O'Connell Street.*

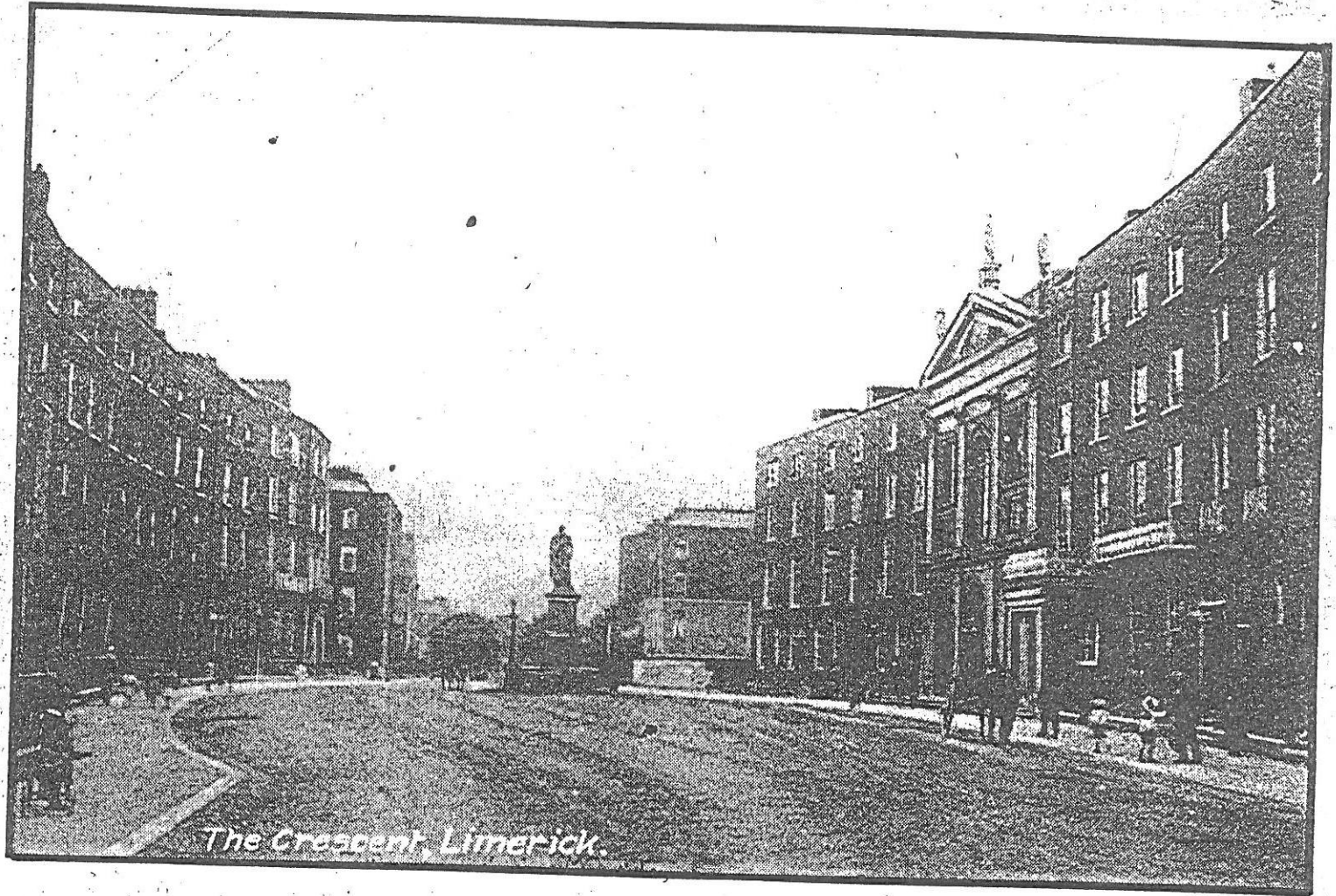
Instead of Spa, we'll drink
brown ale,
And pay the reckoning on
the nail,
No man for debt shall go to
jail,
From Garryowen in glory.
We'll break windows, we'll
break doors,
The watch knock down by
threes and fours,
Then let the doctors work
their cures,
And tinker up our bruises.

"Imagine the feelings of
respectable citizens,
safe in bed, listening to
the destruction being
wrought in the streets at
night by the high spi-
rited young men.

The Dominican Abbey

The ruins of this abbey,
which are situated in the
grounds of St. Mary's Con-
vent, are still well preserved,
and some very interesting
inscriptions may still be
seen in the convent
grounds.


Thomond Bridge and King John's Castle taken about 50 years ago.



The Crescent, Limerick.

A full view of the magnificent Crescent with the O'Connell Monument in the background.

The Corporation indicates the following Development Objectives for the use of particular areas for particular purposes, provided that if on the date of the adoption of the Plan there is in existence any use which is not in accordance with the use indicated in the Development Plan such use may continue but may not be materially changed, except to conform to an approved use or a use indicated in the Plan.

- (a) Areas marked  or coloured orange on Plan, ref. DP 1 to be used primarily for residential purposes.

able having regard to the overall development of the area and the up-to-date assessment of the need for the preservation of open space in the area.

- (f) Areas marked **BG** on Plan, ref. DP 1 to be used for burial grounds.

Ref.: Section 19-2 (a) (i).



The Crescent, O'Connell Street, Limerick.

1 The Corporation indicate development objectives for es: width, level, and construction

- (i) The lines of roads shall conform shown on Plan, ref. DP 2 or conditions, if any, attached
- (ii) The width of roads shall conform widths as shown on Plan, re determined by the Corporation follows:
- (a) the width of carriageway to but not exceeding 31 shall be not less than 1 kerbs;
 - (b) the width of carriageway exceeding 31m. (100 ft) 93m. (300 ft.) shall be (20 ft.) between kerbs;
 - (c) the width of carriageway exceeding 93m. (300 shall not be less than 7 kerbs, provided that in Corporation considers t carriageway may be re may, by conditions att require a greater width constructed and further the number of propo modated by any road is ning Authority may acc carriageway, and furth there is in force any Regulations or Bye-Lav of carriageways which standard than that se higher shall be adhere
- (iii) A turning head shall be each cul-de-sac of diameter (50ft.) between kerbs. Cor tions attached to permissi ment in special circumsta
- (iv) The width of footpaths, w provided on both sides adjacent thereto except i which pedestrian traffic is

CK

thin the confines of the
had its beginning. And
d debris of the years –
ation – undoubtedly lie
reets, its markets, its
efacts.



Georgian elegance: O
Connell Street, Limerick



Georgian doorways,
Limerick