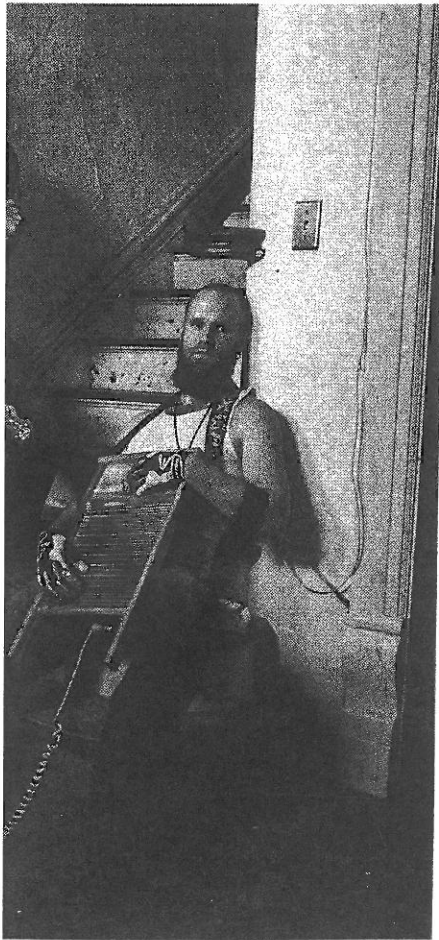


Watch and listen to music on the blog www.musiclimerick.com

pin' with ller Band



the band received rave reviews including nugget from ZZ Top's Billy Gibbons: "I don't remember having stood through an opening show in quite sometime but I couldn't leave, they were that engaging." The current album from The Ben Miller Band is 'Way, Shape or Form'. It has raised the band's profile, combining the urgency of rock and roll, frenetic energy of bluegrass and the spirited spirit of Appalachian mountain music in a unique musical stew. It was produced by Mike Powell (Jack White, Kings of Leon, The Black Keys) at Sputnik Studios in Nashville. The Ben Miller Band play Kasbah Social Club, Limerick, on Wednesday July 29.

Mike Hanly to Live Music Sessions



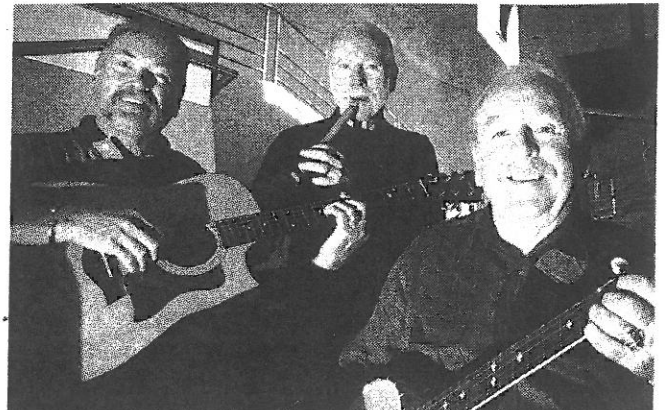
BALLADS

Wolfe Tones back on the road

THOMOND Park will welcome legendary balladeers The Wolfe Tones next month. The group will showcase their many hit songs from the past 50 years in the hallowed ground of Munster Rugby for a one-off concert.

Since the early 60s The Wolfe Tones have been the soundtrack to many generations brought up on hit songs such as 'Kevin Barry', 'The Ballad of James Connolly', 'Grace', 'Streets of New York', 'Celtic Symphony', 'On The One Road', 'God Save Ireland' and not forgetting, 'A Nation Once Again'.

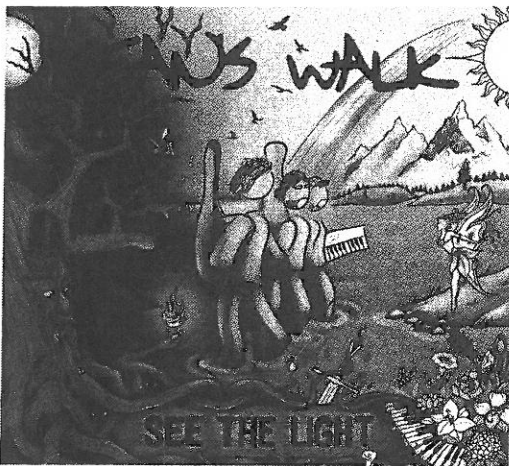
"The boys were very anxious to include a trip to Limerick as part of their On The Road To The Rising Tour for one last time



before they bid farewell to their fans and friends in the Treaty County," Limerick Post learned. Support comes from Limerick

group Parcel of Rogues. The Wolfe Tones play Thomond Park on Saturday August 15.

NEW MUSIC



Sean's Walk - 'See the Light'

LIMERICK group Sean's Walk was formed in the early Summer of 2012 by Seán O' Dálaigh (guitar, vocals), Alec Brown (cello, backing vocals) and Ciarán McLoughlin (piano, backing vocals). The trio has been busy arranging Sean's songs using their influences of Irish music, jazz, blues and funk to mix vocals and heartfelt lyrics over intricate interplay between the guitar, piano and cello.

The results can be heard on the debut album 'See the Light' out now. Sean's Walk launch the record in Dolan's this Saturday July 25.

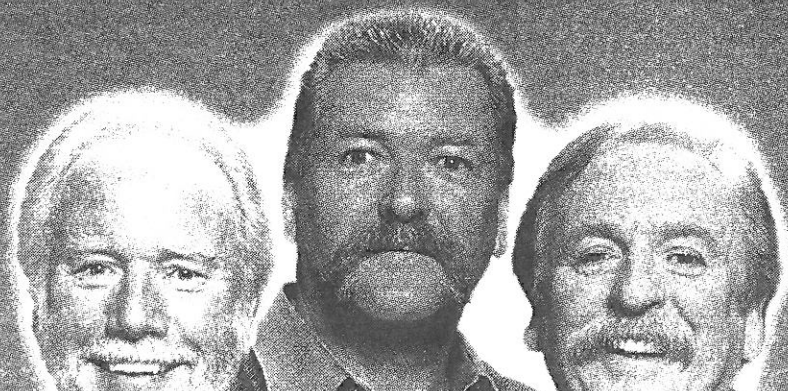
Linden Productions Proudly Presents

the wolfe tones



In Concert

On The Road To The Rising



EX: LIMERICK POST
25 74 JULY 2015 PAGE 81