

Christmas in GLIN

Glin sweeps down to the shore

Glin is known internationally as the home of the Knight of Glin and it is scenically located on the shores of the Shannon Estuary.

On the N69 between Foynes and Tarbert, the population of the village in 2006 was 566. A Tidy Town award-winner over the years the old and the new sit comfortably side by side and it has its preserved dwellings at Harrington's Terrace. Glin means 'The Glen' and the 18th century Glin Castle is in the Fitzgerald family for over 700 years. The castle was opened to the public for gourmet dining, luxury overnighting and weddings some years ago.

The 300 acre castle demesne has gardens, park-

land and leisure activities and tourist attractions are available for visitors who decide to stay at Glin castle for a period.

The first castle was built in 1200 and its ruins are still visible. The castle now standing was built between 1700 and 1790 and though still called a castle it is in fact a Georgian house.

The village traditionally held fair days in June, September and December and another tradition in the parish involved weddings. When a newly-married couple emerged from the church of the Immaculate Conception they were prevented from the leaving the church. Children blocked the road and it was reopened when the

children were given money by the newly-weds. This tradition apparently still survives to this day.

With its spacious well-appointed main street, the village has a variety of retail outlets and socially it is well-catered for with a GAA club who reached a county final last year, soccer clubs and the ICA is supported by the ladies of the parish. The area is also noted for coursing with the coursing club holding its major meeting in October.

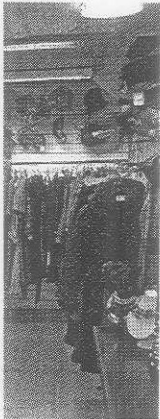
For the record local man Con Fitzgerald captained Limerick Commercials in 1897 when they won the All-Ireland beating Dublin Young

Ireland. Family still living in the area remember his notable achievement.

Glin parish families live within easy commuting distance of well-known employers such as RUSAL Aughinish, Moneypoint power station on the other side of the estuary which is accessible by ferry and Tarbert power station and Wyeth in Askeaton.

Its secondary education needs are served by Tarbert Community School and it has its own primary school.

Beside the estuary is an attractive new play area for children and well-kept tennis courts.



: BRENDAN GLEESON

