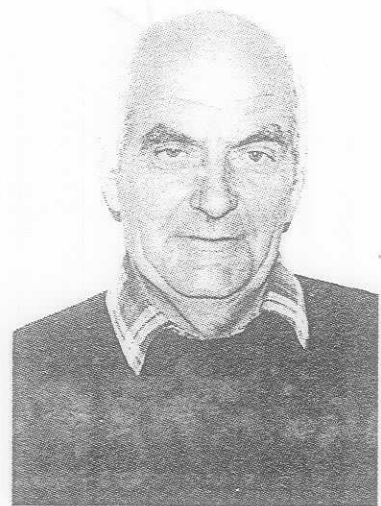


Glin flk

Hegarty, Army Officer; Account Executive, Public Relations of Ireland 1979-85, Director 1985-89; formed own company, Managing Director, Financial and Corporate Communications Ltd 1989 to date; Director: National Lottery Company 1989 to date, Irish Goods Council 1988 to date; Chairperson, Public Relations Consultants Association 1990-91; Council member, Public Relations Institute of Ireland 1989-91; member: National Union of Journalists, Network. One of the rising stars in the public relations firmament. Hobbies, relaxing, reading, music and movies.



Patrick J. Glennon

GLENNON, Patrick John; MANAGING DIRECTOR GLENNON BROS TIMBER LTD; b 1924; educ St. Michael's National School, Longford; Vocational School, Longford; m Patricia Campbell, Director; 3 s 3 da; Managing Director, Glennon Bros Timber Ltd 1975 to date; President, HGTMA 1976-80; Board member, Coillte Teo 1989 to date; Advisor to Tim Severin on the timbers used in the Brendan Voyage; member of the Review Body involved in the setting up of a commercial body for the Forest and Wildlife Service. Hobbies, travel, shooting and bridge; clubs: County Longford Bridge Club, "67" Bridge Club.

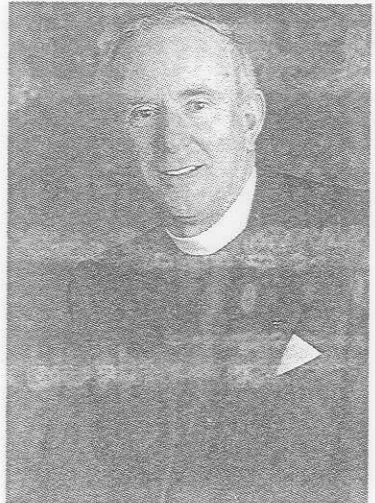
GLIN 29th KNIGHT OF, (The Black Knight), Desmond John Villiers FitzGerald; FINE ART AUCTIONEER, AUTHOR; b 1937; educ Stowe (UK); University of British Columbia, BA; Harvard University, MA; m Lulu (Louise) de la Falaise; (m dis); m Olda Anne Willes; 3 da; Assistant and Department Keeper, Furniture and Woodwork Department, Victoria and Albert Museum (London) 1965-75; Irish Agent for Christies 1975 to date; Vice-Chairman, Irish Georgian Society; Chairman and Director, Irish Georgian Foundation; Director, Irish HITHA; Trustee, Castletown Foundation; publications include numerous articles on Irish art and architecture for international journals, as well as: *Ireland Observed* (with Maurice Craig), *Lost Demesnes* (with Edward Malins), *The Painters of Ireland* (with Anne Crookshank), contributor to *Vanishing Country Houses of Ireland*. A successful fine art Auctioneer and international lecturer; the last of the high profile Anglo-Irish. Hobbies, art and history; Clubs: Whites, Beefsteak, Kildare Street and University Club.



Desmond FitzGerald, The Knight of Glin

GOOD, J. Winston; METHODIST MINISTER; b 1934; educ Sandford Park School, Dublin; Edgehill Theological College, Belfast; m Kathleen McVitty, Secretary; 2 s 1 da; Bank Official with Royal Bank of Ireland (now Allied Irish Bank) 1952-56; Methodist Minister 1962; President of the Methodist Church in Ireland June 1991-June 1992. Hobby, gardening.

GOODMAN, Larry; CHAIRMAN ANGLO IRISH BEEF PROCESSORS LTD; b 1939; educ Marist College, Dundalk; m Kitty Brennan; 2 s; commenced career as a trader in sheepskins, hides and other animal by-products; opened meat processing and export plants throughout Ireland, with offices in the UK and Europe; Chairman, Anglo Irish Beef Processors Ltd, with plants in Bandon, Cahir, Carlow, Carrigans, Swords, Dundalk, Longford, Nenagh, Ferrybank and Rathkeale; expanded business to become the largest meat exporter/processor in Europe; the Goodman Group of companies is currently involved in a Tribunal Inquiry. A workaholic who rose, with great speed, to become one of the most powerful figures in the Irish agribusiness; said to be familiar with the corridors of power.



Rev. J. Winston Good