

Limerick Chronicle

November 5, 1991.

PRICE 25p

5^A

YEAR 225

ATTACK ONCE BY ALKS

nt to-
l drugs
monly
cardiac
also

CEO
end of
Heart
rs to a
round
ipped
hospi-

saged
imilar
from

es on
practi-
service
suf-
or are
such a

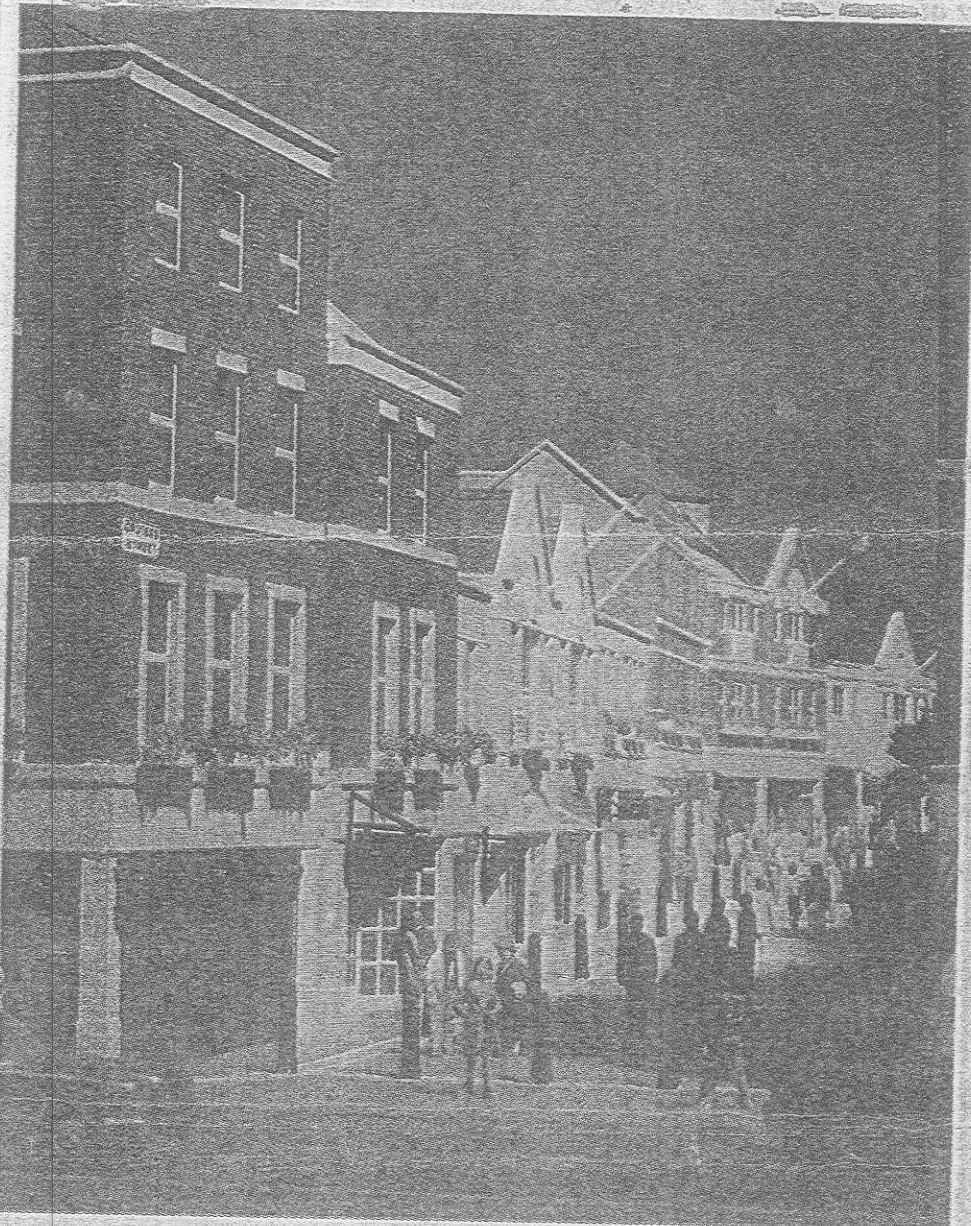
by a
d, on
doc-

tor is in a position to treat the patient and determine whether hospitalisation is warranted.

Unfortunately, Mr Doherty said, efforts to introduce a similar service at the Regional Hospital have encountered industrial relations problems.

Extensive discussions, he said, took place with the organisations representing coronary care nursing staff of the Regional Hospital with a view to these nurses travelling in the cardiac car to the scene of the emergency.

Mr Denis Ryan, board member, said it was unfair to make "nurses the villains of the piece".



Cruises Street as it will look from O'Connell Street is shown in this remarkably detailed model. The development will be complete in time for the Christmas season next year.

Your Chronicle ever since 1766

THE LIMERICK CHRONICLE this week celebrates its 225th year of continuous service to the people of Limerick.

With the exception of an enforced break of a couple of weeks during the city's general strike of 1919 and a ten-day suspension during the Civil war, this newspaper has served Limerick, generation after generation.

Spaight's

Of Henry Street