

late
Pat
tler

Mr. Pat Butler, took
to hospital last
short illness. The
was a native of
re, where he was
years ago. Pat, who
ork in Manchester
s ago, was a son of
ddy Butler, Kyle,
andson of the late
won an All-Ireland
g Championship
erick in 1897 as
Senior. Hurling
with Cappamore in
so a nephew of Sis-
Butler, Sisters of
y Hospital, Portla-
his departure for
ee years ago, Pat
in no uncertain
extremely popular
native parish and
ch involved in the
umber of sporting
parish. He was a
of the Cappamore
d he rendered tre-
e to the club as a
t-player in minor,
nd senior hurling
also registrar of the
ears. He was also a
er of Cappamore
ow Committee and
-War Club. When
ews of his untimely
ough it cast a gloom
row over the entire
of Cappamore and
districts.

ny of the esteem in
ighly held was fully
ery large contingent
s which travelled to
ins at Dublin Air-
port the coffin was
the green and gold
ers of Cappamore
well as the G.A.A.
Pat wore with dis-
he remains were then
ad to Cappamore
and when the cor-
the outskirts of the
ught to a halt at the
ool where it was
of honour of mem-
more G.A.A. Club
Show Committee.
of the local Show.
ffin was taken from
orne shoulder high
six members of the
club, who acted as
hen the remains
the church some
etic and moving
on witnessed where
se of sympathisers
yal of the remains.
ns were received by
Meagher (cousin),
eage, cousin of the
rected the Solemn
eal.

owing day Solemn
Mass was again
eal of his soul in
Meagher was the
elegant. The other
ants were Rev. Fr.
Manchester; Rev. Fr.
ag, C.S.Sp.; Rock-
and Rev. Fr. Denis
y. Other clergy in
ere Rev. Fr. W.
ppamore; Rev. Fr.
Lattin; Rev. M.
Cappamore; Rev.
Knocklong and
gan, C.S.Sp. After
al took place to
y and here again
local G.A.A. club
mmittee formed a
from the church to
National School.
eage reached Doon
on the outskirts of
bers of both organ-
formed another
ur and proceeded
e with the hearse
etry where they
Guard of Honour
eside. Rev. Fr.
ed at the Prayers

could hear the customer at the
other end of the phone checking
with all his employees, and he came
back and told her that none of them
had collected those windows.

Pushed
Then, she alleged, he pushed her
off the chair onto the floor, hurting
her hip, and then pulled her up by
the cardigan.

Customer
On May 11 she started work as
usual at 9 a.m. and at 11 a.m. she
answered a phone call from a cus-
tomer who was enquiring about

work will commence on eleven new
luxury bedrooms. At present the
hotel has 80 bedrooms.

By his investment so far of
£130,000, Mr. Kenneally has
demonstrated his faith in the
future.

Cruise's enhances its Royal image

ONE of Limerick's famous landmarks, Cruise's Royal Hotel, established in 1791, is currently undergoing a major £130,000 development and modernisation programme.

Already eight new luxury bedrooms have been completed, in addition to a new coffee shop, and a re-designed ballroom and conference hall.

Spearheading the ongoing programme is Mr. Colm Kenneally, who also marks his 21st year as managing director of the hotel this week.

It was in mid-1960 that he took over at Cruise's Hotel, determined to enhance the high reputation which the hotel enjoyed.

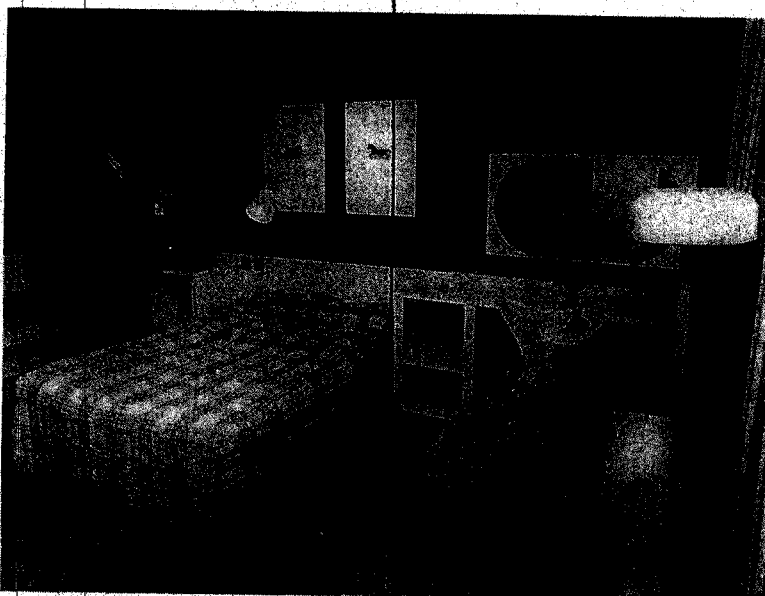
Now, as a measure of his faith in the future of the hotel industry, Mr. Kenneally has so far invested £130,000 in the development work, which forms part of the ongoing programme. A new multi-purpose lighting system, imported from the United States, has been installed in the ballroom, and night club.

Employed

Preferring to stay in the back-ground, the Cork-born businessman attributes Cruise's popularity to the value and service they offer, and to the professionalism of the staff, under manager, Mr. Owen McCormick. A total of 70 full-time staff are employed.

Cruise's Royal Hotel is part of Limerick's social and political history. In fact, it was over a drink in the bar, way back in the 'twenties, that the idea of the Ardacrusha Power Station first took shape in the thoughts of the Shannon Scheme pioneers.

Justly proud of the Cruise's Hotel reputation, Mr. Kenneally can recall most of the famous people who have stayed there. The



Mr. Colm Kenneally marks 21 years as managing director of Cruise's Royal Hotel by embarking on a £130,000 re-development programme.

VIP Suite 49 was always sought by the President de Valera whenever he passed through Limerick.

World personalities, ranging from boxer Cassius Clay to American politician, Sen. Ted Kennedy, have visited Cruise's Hotel. Leading Irish figures of Church and State have also stayed there, in addition to foreign heads of governments.

A man with other business inter-

ests, Mr. Kenneally, regards the hotel as his principal commercial activity. He feels that Cruise's has a reputation for standards and service, and it is his policy to endeavour to keep costs down.

"Escalating costs certainly present a problem," he commented, "but it is our intention to keep prices as low as possible."

In November, Mr. Kenneally launches yet another stage of the development programme when

EMPLOYEE'S ALLEGATION DISMISSED BY COURT

A LIMERICK woman who had worked in an office for nine years brought her former employer to court for alleged common assault.

Mary Cooley, 55 Henry Street, claimed in Limerick City Court that she was pushed to the floor and pulled by the cardigan by her employer, John Duggan, 14 Gouldavoher Road, Limerick, after an incident in his Roche's Street office.

Justice de Burca dismissed the summons.

She also claimed that he used abusive language telling her to get out before "he put her through the door."

Complainant said that she had been employed for over nine years in Duggan's office. She did book-keeping, typing and all kinds of office work.

On May 11 she started work as usual at 9 a.m. and at 11 a.m. she answered a phone call from a customer who was enquiring about

employment hadn't been terminated, she said that she had no doubts but that it was, when she was told to get out or she'd be put through the door.

John Duggan told the court that he was worried at the time about the missing windows. He had given them to a man in overalls who was driving a van with his customer's name on it.

He told the court that he was talking to that customer on the phone when Miss Cooley told him that he hadn't a clue how to run the office. He asked her to leave and she stumbled as she got up and fell to the floor.

"Being a man," he went on, "I went over to pick her up, but she refused to let me pick her up."

Her claim that she had been pushed to the floor was, he said, "a complete fabrication."

He said that he never struck a woman in his life.

Witness said that the defendant raised his voice at her, but he certainly didn't lay a hand on her. He told her to get out while he was on the phone, and as she got up she seemed to stumble and he went to pick her up.

Dismissal of the summons, Justice de Burca said, "I must have a doubt in this case, and possibly more."

He admitted to Mr. Tom O'Donnell, solr., for the complainant, that he could have used "strong language" when he asked her to leave but he didn't use the phrase she said he had used.

He was annoyed that the customer at the other end of the phone could hear the whole conversation.

When further questioned by Mr.

Following Government approval of increases in CIE passenger fares and freight

Tom
BIG B
S